

Fleet Community Notices



Wednesday 30th April 2025



New items this week...

See below on this page if you are a parent in Year 4 or 5 see ad below about a 'Moving On' event in June. Also below is information about a family art day coming up at our favourite gallery, The October Gallery. Finally, new on this page is a request from us to Support June, our amazing Admin, who is raising money for a great cause—do give what you can. [Page 2](#) is final reminder for art competition finishing on Friday. [Page 3 and 4](#) have been updated with latest dates. While [Page 21](#) has the latest parent information sheet from National College—this week so top tips for your children when out and about. Reminder about your local councillor surgeries ([Page 35](#)) - tomorrow being the first Thursday of the Month, Councillor Boyland will be holding his drop in at Fleet between 9-10am. [Page 37](#) has information for any of our Bengali families who want to know more about the services on offer for children with additional needs. Please do take a moment to look at the whole newsletter—there is so much on offer in Camden from the Council and other local community groups.

Family Art Day at the October Gallery

Saturday 10th May @ 10am - 12pm

Drop-in for families with children of all ages. **Please note:** this event is first come first served and when we are at capacity, we have a one in one out policy. Join us to explore the Luminous Matter exhibition! We'll explore the interesting shapes, lights and shadows using various materials. Participants will create their very own luminous and radiant artworks! OG Education takes a playful and exploratory approach to family learning by creating imaginative sessions to engage with October Gallery's current exhibitions. We are committed to creating high quality creative engagements that are inclusive, accessible and free. Currently our sessions run on the second Saturday of the month.

We encourage families to explore the gallery and exhibition through many art making activities. Families get a chance to work with various artist educators and members of our OG Youth Collective exploring materials and techniques they may not have tried before in the beautiful gallery setting. Our family sessions are FREE and open to children of all ages from 10am-12pm and families can stay as long as they like.

Message from June...Please Support her...

I am taking part in race for life on May 10th walking for many people I know who are not here because of this terrible disease, if you can help please donate, thank you.

Cancer is happening right now, which is why I'm taking part in a Race for Life 5k to raise money and save lives.

1 in 2 people will be diagnosed with cancer in their lifetime. Every single pound you donate makes a difference to Cancer Research UK's groundbreaking work, so please sponsor me now.

<https://fundraise.cancerresearchuk.org/page/junes-race-for-life-14062880>

Contents—Hyperlinks...

- [Dates for diary/term dates Pg 3-4](#)
- [Attendance Pg 6-7](#)
- [Fundraising Pg 8](#)
- [ParentHub Pg 9](#)
- [Forest School Request Pg 10](#)
- [Music including Camden Music @ Fleet Pg 11-17](#)
- [Reading, Writing, Language & Communication Resources Pg 18-20](#)
- [Wake Up Wednesday Parent Information Sheet Pg 21](#)
- [Adult Volunteering and Jobs in schools – Pg 22-23](#)
- [Clubs and Events for children and adults – Pg 24-34](#)
- [Local Councillor Surgeries—Pg 35](#)
- [Parent Advice & Support \(financial, physical & mental health etc. – Pg 36-46](#)
- [Growth Mindset & Gender Equality information - Pg 47-48](#)

Online learning resources and homework

- Mathematics: login.mathletics.com or download app for mobile
- Times Table Rockstars: <https://play.ttrockstars.com/auth/school> or download app for mobile
- Numbots (EYFS/KS1): <https://play.numbots.com/#/account/school-login/33442>
- Busy things: <https://www.busythings.co.uk/igfl-login/>

If you do not have working internet or a device for your children to access these resources on (tablet, laptop or computer) please speak to their class teacher as soon as possible. Other Homework for most classes will be delivered via Google Classroom.

Morning Snacks—Fruit only please

Please can you ensure that if your child is bringing in a morning snack to have at playtime that is restricted to a piece of fruit. Any other food items should be kept to have with their lunch and any packaging disposed of in the dining room (or if in Tupperware left on the trolley in the hall to be collected after school). Thank you.

'Moving On' event for Y4 & Y5 Parents

Camden are inviting parents of children in years 4 and 5 at primary schools to a Camden Moving On to Secondary School Event on **Thursday 5 June 2025** at the Francis Crick Institute.

This free, in-person event is a great opportunity to receive advice on how to apply for a Year 7 place for September 2026 and beyond from the Camden Admissions Team. You can also find out more about what Camden secondary schools have to offer your child, and speak with headteachers, student ambassadors and staff from these schools. Book via link below:

<https://shorturl.at/d1EBA>

EVERSHEDS
SUTHERLAND



Design your own

WILDLY WONDERFUL WETLAND ANIMAL

OUR CREATIVE COMPETITION FOR ANYONE AGED

4 – 11



You can **draw, paint, write a poem, make a collage,** or **tell us a story** about your wildly wonderful wetland animal.

Let your imagination run wild! It can be a new animal, a mix of animals, or an animal with superpowers!

To Submit artwork visit this site:

<https://email.es-notifications.com/62/5462/landing-pages/world-wetlands-day-2025.asp>

Deadline is the 2nd May!

We have fun prizes for both individuals and a whole class.

Prizes will include hampers or vouchers to aid environmental learning

For You!

For a class!

Age 4-7

1st - £150

1st - £350

Age 8-11

2nd - £100

2nd - £250

3rd - £50

3rd - £100

More info: <https://email.es-notifications.com/62/5462/landing-pages/world-wetlands-day-2025.asp>

Dates for your diary this term...

Please bear in mind that occasionally trips may be arranged or cancelled last minute. Where possible we will give as much notice as we can. We need adult volunteers to support on these trips so please do look out for notices on class windows or sent out via ParentHub. Thank you.

WHOLE SCHOOL EVENTS

| | |
|---------------|---|
| 5th May | School Close—May Day Bank Holiday |
| 16th May | Coffee Morning—9-10am—Managing Child Worries |
| 26th-30th May | Half Term—School Closed |
| 2nd June | INSET Day—School Closed |
| 6th June | Coffee Coffee Morning—Parent Child Interactions |
| 20th June | Coffee Morning—Sibling Rivalry |
| 18th July | Rec, KS1 and KS2 Sports Day—Hampstead Heath Running Track |

NURSERY 2024-25

| | |
|-----------|-----------------|
| 19th June | London Zoo Trip |
|-----------|-----------------|

PARENTS ASSOCIATION & SPECIAL EVENTS

| | |
|----------|------------------------------|
| 22nd May | EID Celebration after school |
|----------|------------------------------|

RECEPTION 2024-25

| | |
|-----------|---------------------------------------|
| 8th May | Stay and Play—9-10am |
| 15th May | Trip—Hampstead Heath—Animal Adventure |
| 18th June | Trip—Kentish Town City Farm |
| 25th June | Trip—London Zoo |
| 11th June | Class Assembly for Parents @ 10am |

YEAR 4 2024-25

| | |
|-----------|-----------------------------------|
| 13th May | Trip—The Orangery Vertical Farm |
| 20th May | Trip—London Zoo |
| 13th June | Class Assembly for Parents @ 10am |
| 18th June | Cricket Festival |

YEAR 1 2024-25

| | |
|-----------|-----------------------------------|
| 4th July | Class Assembly for Parents @ 10am |
| 15th July | Trip—Kew Gardens |

YEAR 5 2024-25

| | |
|-----------|-----------------------------------|
| 9th May | Trip—London Zoo |
| 5th June | Trip—Earthfest |
| 6th June | Class Assembly for Parents @ 10am |
| 26th June | Trip—Crick Institute |

YEAR 2 2024-25

| | |
|-----------|--|
| 8th May | Trip—Talacre |
| 23rd May | Trip—London Zoo |
| 11th June | Trip—Gurdwara |
| 27th June | Class Assembly for parents @ 10am |
| 10th July | Trip—Chalkwell Beach (weather dependent) |

YEAR 6 2024-25

| | |
|---------------|---------------------------|
| 12th-15th May | KS2 SATs Week |
| 5th June | Trip—Earthfest |
| 9th-13th June | Residential Trip to Gower |

YEAR 3 2024-25

| | |
|-----------|-----------------------------------|
| 12th May | Trip—Kenwood House |
| 23rd May | Trip—Hampstead Heath |
| 20th June | Class Assembly for Parents @ 10am |

Term Dates for 2024-25

**School Closed for May
Day Bank Holiday—**

**This Monday
5th May**

**INSET Day—School
Closed**

Monday 2nd June

SUMMER TERM

| | |
|-----------------------|--|
| First day of term | Wednesday 23 rd April 2025 |
| May Day Bank Holiday | Monday 5 th May 2025 - school closed |
| Half term (inclusive) | Monday 26 th May – Friday 30 th May 2025 |
| Last day of term | Tuesday 22 nd July 2025 – close at 2pm |

STAFF INSET DAYS – SCHOOL CLOSED

| | Autumn Term | Spring Term | Summer Term |
|---------------------------|---|-------------------------------------|-------------------------------------|
| 1 st half term | Monday 2 nd and Tuesday 3 rd September 2024 | Monday 6 th January 2025 | Tuesday 22 nd April 2025 |
| 2 nd half term | | | Monday 2 nd June 2025 |

Please note Nursery and Reception start dates in the Autumn Term differ due to home visits and phased transition. You will receive your child's start date as part of the welcome pack and will be discussed at the meeting prior to the Autumn Term start.

Nut Free School

Please remember we are a nut free school. Nuts and items containing nuts should not be brought into school as snacks, part of packed lunches, or as donations to the Class Tea Sales. Thank you for your understanding and care to ensure we prevent dangers from allergic reactions.

STOP!

you are now entering a



nut
free
zone

please DO NOT bring
nuts into this area

BE ALLERGY AWARE WITH ALLERGY LIFESTYLE®

www.allergylifestyle.com



Don't let your child miss out - every school day counts

Attending regularly is vital for your child's happiness and success in school.

We know that pupils with good school attendance – of 95% or more – are far more likely to achieve the expected level in their primary school tests at age 11 and go on to gain good passes in their GCSEs at age 16.

Every day your child is not in classes means they're less likely than their classmates to do well in school.

We know that most parents and carers make sure their children attend regularly. However, we also know absence rates in Camden are higher than we would like.

Please support your child to go to school regularly. If you need help or advice, please speak to your child's school.

Message to parents from our School Inclusion Support Officer

School Inclusion Support Officers

Over the last few months, you may have seen stories about the importance of good attendance on social media, on TV, in newspapers and there have been posters in bus shelter in Camden and the government has launched its Moments Matter Attendance counts campaign this month. The government is very concerned about the number of pupils who are missing school, and they are asking council's attendance services and schools to help support children return to school.

Camden council has appointed three new School Inclusion Support Officers to help support schools improve attendance and reduce suspensions / exclusions by ensuring children and young people who are absent from education or at risk of suspension/exclusion receive appropriate interventions and support to enable them to achieve positive educational outcomes.

Our School Inclusion Support officer is Ms. Alison Ellis, and she will be visiting us in the coming weeks and some parents may be invited to meet with the School Inclusion Support Officer to discuss the reason for poor attendance and what we can do to help your child to return to school.

We know that children who attend school regularly and on time are more able to access their learning, get support in subjects they may struggle with and have a better chance of passing their exams.

We know as a parent you also worry about your child's future, and we want to work with you to ensure every pupil at Fleet has a full-time education to maximise opportunities for everyone to realise their potential.

Being a parent is not easy if you need talk to someone about your child's attendance, please contact me on: alison.ellis@camden.gov.uk

It is never too late to benefit from good attendance.



Raise FREE donations for

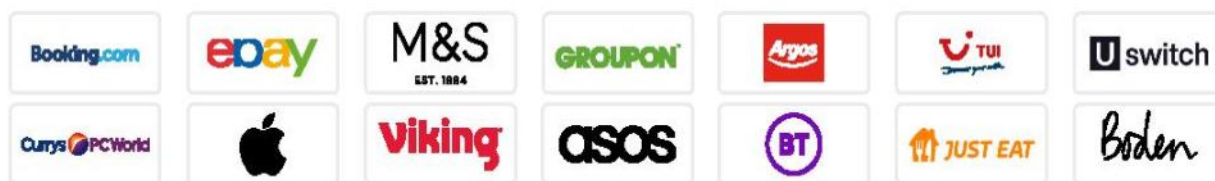
FLEET PRIMARY SCHOOL

every time you **shop online**

Find us on **easyfundraising.org.uk**

<http://www.easyfundraising.org.uk/causes/fleetps>

4,300 online sites will give us a free donation
when you shop with them - at no extra cost to you!



Download the easyfundraising App



NOTE...

Make sure you also add your individual children, not just classes, to ensure you receive individual messages as well as class and school notices. If you have any queries speak with Lisa Tan via the school office!

Fleet Primary School

would like you to join their channel on Parent Hub.

Just tap “Add a School” in the app and enter the handle below...

@FleetPrimary

The Parent Hub app is FREE to download and use.



What is Parent Hub?



Parent Hub is a FREE app that helps keep you up to date with what's going on at school. You'll receive messages, pictures, documents and newsletters, all in one handy place.

Instructions for Parents



1. Download the Parent Hub app from your app store (iPhone or Android).
2. Create yourself an account.
3. Choose “Add a School” and enter the school handle (above).

Visit www.parenthub.co.uk to find out more

If you or any friends/family are tidying gardens and pruning trees please save and bring in any branches or logs for our Forest School. Any size! They are very useful for making dens and forest crafts. Thank you so much. If you have any questions, please pop over and speak to Rebecca Combes in Nursery.



Fleet's Forest School Request



Camden Youth Steel Bands

Open to all children and young people. No experience is needed!



Rehearsals are at the Crowndale Centre each Saturday morning starting on 1 March 2025.

09:30 to 10:15 am - Training Steel Band (Pupils in Year 4 to 6)

10:30 to 11:30 am - Camden Youth Steel Band (Secondary aged pupils)

£66.70 per term

(help is available for those eligible for free school meals).

*Scan the QR code
below to register*



Why Learn Steel Pan Music?

Cultural Enrichment: Discover the rich history and vibrant culture of steel pan music.

Musical Skills: Develop rhythm, coordination, and musicality.

Teamwork: Enhance your ability to work as part of a group.

Confidence: Build self-esteem through performance and practice.

Fun and Engaging: Join a unique and enjoyable musical experience.

camdenmusictrust



Camden
Learning

Supported using public funding by
Department for Education
ARTS COUNCIL
ENGLAND

CAMDEN MUSIC | CROWDALE CENTRE
218 EVERS HOLT STREET | LONDON | NW1 1BD



camdenmusic



Music lessons at Fleet School

- Piano, Drum kit, Woodwind (recorder, flute, clarinet, saxophone)
- Lessons take place during the school day
- Hire an instrument from Camden Music Service, or buy an instrument at a reduced rate

Getting started is easy!

Simply apply online

www.camden.gov.uk/camdens-music-service



Or scan the QR code

020 7974 7239

camdenmusic@camden.gov.uk



camdenmusic



Have fun learning to play the drums at Fleet School

- Lessons will take place during the school day
- Taught by an experienced Camden Music Tutor
- Recommended for children in years 2 - 6

Getting started is easy!

Simply apply online

www.camden.gov.uk/camdens-music-service

020 7974 7239

camdenmusic@camden.gov.uk



Have fun learning to play the piano at Fleet School

- Lessons take place during the school day
- Suitable for children in Years 2 - 6
- Buy an instrument at a reduced rate

Getting started is easy!

Simply apply online

www.camden.gov.uk/camdens-music-service

Or scan the QR code above

020 7974 7239

camdenmusic@camden.gov.uk

Half price instrument/singing lessons for children of families claiming housing benefit and council tax support

Universal Music Group has generously given us some money to help families of pupils in KS2 (Years 3 to 6) to pay for music lessons. **Priority will be given to those pupils already on instrument lesson waiting lists.**

Here are the instruments you can choose in this scheme (please note that not all schools can offer all instruments as for tutors to attend a school there needs to be a certain amount of children wanting to do a specific instrument.

Apply here: <https://www.camden.gov.uk/apply-for-music-lessons-in-school>

| | | | |
|--|---|---|---|
|  | <p>Violin <u>J.S Bach - "Chaconne" Partita No.2 by Esther Abrami - YouTube</u></p> <p>Usually plays the tune 'Small and light'</p> | <p>Percussion <u>Hyun-gi Lee - Garage Drummer - Percussion Final - BBC Young Musicians 2012 - YouTube—https://www.youtube.com/watch?v=xxzK9CipS04</u></p> <p>Ideal if you want to play lots of different instruments, from small to large</p> |  |
|  | <p>Cello <u>Sheku Kanneh-Mason - No Woman, No Cry (Arr. Cello) [Studio Session] - YouTube</u></p> <p>Plays the lower accompaniment, usually large to carry, on your back</p> | <p>Ukulele <u>Jake Shimabukuro Performing Bohemian Rhapsody On HiSessions - YouTube</u></p> <p>Small and light to carry Easy to write songs and sing along with</p> |  |
|  | <p>Recorder <u>BBC Young Musician 2012 - Charlotte Barbour-Condini (recorder) - Trotto (Anon.) - YouTube</u></p> <p>Small and light to carry Lots of different sizes from very low to very high You need lots of gentle breath control!</p> | <p>Guitar <u>BACH Sean Shibe BWV 997 (Development) - YouTube</u></p> <p>Can play the melody or strum chords Easy to write songs and sing along with You can play alone or in a band</p> |  |
|  | <p>Flute <u>Havana - Camila Cabello Flute Cover - YouTube</u></p> <p>Small and light to carry Needs a lot of breath! Held sideways</p> | <p>Voice / singing lessons</p> |  |
|  | <p>Clarinet <u>Introducing the Clarinet with Julian Bliss Discover Instruments Classic FM - YouTube</u></p> <p>Small and light to carry Needs a lot of breath!</p> | <p>Euphonium <u>Uptown Funk (Euphonium Loop) - Tubavisionary - YouTube</u></p> <p>Usually plays the lower accompaniment (not the tune) Be different and play this!</p> |  |
|  | <p>Saxophone <u>BBC Proms - Darius Milhaud: Scaramouche (Excerpt) - YouTube</u></p> <p>Large to carry, on your back Needs a lot of breath!</p> | <p>Trombone <u>GoPro on Trombone: Star Wars - Imperial March - YouTube</u></p> <p>Plays the lower accompaniment usually, although sometimes has the tune Large to carry</p> |  |
|  | <p>Trumpet <u>Alison Balsom - Autumn Leaves (Les Feuilles Mortes) - Live in London - YouTube</u></p> <p>Small to carry Needs a lot of breath</p> | <p>French Horn <u>Instrument: Horn - YouTube</u></p> <p>Medium sized Be different and play this!</p> |  |

Why learn music?

Learning a musical instrument can –

Support your child's literacy and numeracy

Help with concentration, co-ordination and mood

Lead to a career or be a lifelong, fulfilling activity where they will make friends.

How can you help?

Your child will need to practise regularly to make progress. At first this will mean setting aside 10 – 15 minutes three or four times a week (a regular time is best) but as your child progresses, they will need to practise most days, for longer. Younger children will need you to help them – you don't need to be musical, just be encouraging.

What else will help?

As soon as your child is able to play for more than a few minutes happily, and can play and read about eight notes, they could join one of our groups, make friends, and really develop their musicality.

Find out more here

www.camden.gov.uk/saturday-music-centres

and here

www.camden.gov.uk/music-service-ensembles

Terms and conditions

All Camden Music staff have enhanced DBS clearance.

Payment for lessons must be made in advance. Lessons can only begin once a payment is received. You may pay in two instalments. You must have paid the second installment by half term.

We offer ten lessons per school term. Most terms have more than ten weeks. In the event of us not being able to offer ten lessons we will credit your account or make a refund for lessons missed. If the school is closed for reasons relating to COVID-19, lessons will be taught online. If you are unable to access online lessons, it may not be possible to make up the missed lessons and no refund will be given.

If the tutor is absent we will try to find a suitably qualified temporary replacement. If this is not possible and your child does not receive the number of lessons paid for that term, you will be reimbursed automatically after the end of the term.

In the event of a pupil not attending a lesson for any reason the tutor will make up the lesson, provided written notice has been given to both the tutor and to the Music Service three weeks before the missed lesson. If this is not possible, the cost of the missed lesson will be credited to your account. Lessons missed without three weeks' notice will not be made up and no refunds will be made.

Camden Music and/or the school will monitor the attendance and progress of pupils receiving free or subsidised lessons, and subsidy may be withdrawn if attendance is unsatisfactory.

If you wish to cancel tuition we require at least half a term's notice.

If you have any queries or require further information, please contact the Camden Music Service – 020 7974 7239 – camdenmusic@camden.gov.uk



- LESSONS IN SCHOOLS
- SATURDAY CENTRES
- SUNDAY GROUPS
- HOLIDAY COURSES

Camden Music is delighted to offer a wide range of one to one and shared music lessons in your school.

Getting started is easy!

Simply go to our website for more information and to register. Why not sign up for an exciting weekend or holiday group as well?

www.camden.gov.uk/camdens-music-service



020 7974 7239

camdenmusic@camden.gov.uk

Camden Music Service

The Crowndale Centre
218 – 220 Eversholt Street
London NW1 1BD
Tel 020 7974 7239

camdenmusic@camden.gov.uk

www.camden.gov.uk/camdens-music-service

Individual Instrument Tuition at Fleet

Welcome to the Camden Instrumental Service

The Camden Music Service aims to extend the range of high quality instrumental tuition available to children attending Camden schools.

What instruments can my child learn?

We currently offer tuition on piano. Do let us know if your child is interested in starting a different instrument. If there is enough interest we can look to provide a tutor.

Will my child need an instrument?

Yes, because to progress children need to practise between lessons. Camden Music Service has a stock of instruments available for hire at very reasonable cost. Unfortunately we are not able to hire pianos, keyboards or drum kits.

If you would like to buy an instrument we can help through our **Instrumental Purchase Scheme** which lets you buy a brand new instrument at a greatly reduced price. To make life even easier, we offer a 12-month interest-free repayment scheme.

When and where will lessons take place?

Most instrumental lessons take place during the school day which means that pupils leave a classroom lesson for a short period.

What types of lessons are there?

We offer shared or individual lessons. Shared lessons can only be offered where there is another child of a suitable age and standard to share with yours. If there isn't, we will arrange a 20-minute individual lesson for you.

Shared lessons

- Ideal for beginners, especially for younger children
- Children learn from each other and have the opportunity to play together; excellent preparation for playing in ensembles later
- Children who start in a group can change to individual lessons later

Individual lessons

- Ideal for children who benefit from individual attention
- Better for children who are easily distracted
- Any sense of competition is reduced
- Easier to arrange a lesson to suit the needs of the child

What will it cost?

The following fees are based on 10 lessons during a school term.

Ten shared lessons (2 children) £84 per term
Ten individual 20 min lessons £112 per term
Ten individual 30 min lessons £168 per term

How do I pay?

The Music Service will send you an invoice before the start of term. **Lessons will only start once you have paid.** Payment may be made online or over the phone.

Is any financial help available?

Children eligible for Free School Meals may apply for a 50% reduction in fees.

What about if we want to stop?

We will invoice you for the next term's lessons shortly after half term. If you don't want to continue, please let us know. Lessons are booked for a term at a time and it is not usually possible to stop lessons part way through a term.

How do I apply?

- You can apply online
- Visit www.camden.gov.uk/camdens-music-service and follow the link to instrumental and voice lessons in schools.
- We will put your child on our waiting list if there is not a lesson space available straight away.
- We will send you an invoice when a lesson is available. Your child's lesson will not start until you pay.

WELCOME TO CAMJAM!

The Camden Music Junior Saturday Centre



JOIN US ON SATURDAYS

at Brecknock School, NW1 9AL

- Music making sessions for children up to Year 5
- Instrumental lessons
- Bands, orchestras and choirs
- Music technology
- Adult choir
- Music groups for babies and very young children



www.camden.gov.uk/saturday-music-centres



camdenmusic

020 7974 7239
camdenmusic@camden.gov.uk



LOTE4Kids *Storytime, in their language*

Kids can now enjoy thousands of picture books in 65+ languages, with English translations. Available in libraries, schools and at home!

1. Visit your library website to learn more.
Or find your library at www.lote4kids.com.
Or download the free *LOTE4Kids App*.
2. Login using your library card number or access code.
3. Find a book, in your language, and enjoy!



Download on the
 App Store



GET IT ON
 Google Play



Camden





Camden



NHS

Whittington Health
NHS Trust

Camden Language and Communication Service (CLCS)

Do you have concerns about a child's
speech, language and/or communication?

Speech and Language Therapy Advice Line:

If you are a parent/carer or professional in
Camden book a phone call with one of our
Speech and Language Therapists:



Call: 020 3772 0390 (please leave a message)

Email: whh-tr.camsltclcs@nhs.net

If you require a phone interpreter, please let us know

**Are you concerned about your child's speech, language
and/or communication skills?**



**Does your child attend a school in Camden, or
do you live in Camden?**



**Camden Language and communication Service (CLCS) are
running parent workshops over the summer term**

To find out more information and book onto a workshop click on
this link:

<https://forms.office.com/e/Ch2BE9NBUI>

or use the QR code:



From the National College - Wakeup Wednesday Guides

At The National College, our WakeUpWednesday guides empower and equip parents, carers and educators with the confidence and practical skills to be able to have informed and age-appropriate conversations with children about online safety, mental health and wellbeing, and climate change. Formerly delivered by National Online Safety, these guides now address wider topics and themes. For further guides, hints and tips, please visit nationalcollege.com.

10 Top Tips for Parents and Educators SAFETY ON THE ROAD

Traffic-related incidents are a significant risk for young pedestrians and cyclists, so understanding road safety is crucial for children's wellbeing. While all road users share responsibility for keeping one another safe, this guide offers strategies for empowering young people to navigate the roads confidently and responsibly.

1 TAKE PRACTICE JOURNEYS

Making 'practice' journeys with children is a great way to help them stay safe, thereby modelling responsible behaviours and having road safety conversations as they prepare to travel independently. Add hazard perception activities like spotting electric vehicles – which may have a green number plate – and point out how quiet they are. Children learn by watching others; remind them that their peers might not always be the best role models.

2 BE BRIGHT, BE SEEN

Visibility is lower during darker winter days, and drivers need to take extra care to look out for pedestrians. Wearing bright and reflective clothing can help make children more visible to drivers near roads. In poor daylight conditions, encourage children to wear light, bright or fluorescent clothing. When it's dark, wear reflective clothing or materials such as a reflective armband or jacket.

3 EYES UP

Encourage children to look up and keep their eyes on the road. Teach them to constantly watch for traffic and practise double-checking the road before crossing – looking right, left and then right again.

4 LIMIT DISTRACTIONS

Where possible, devices like phones should be kept away from children while out and about near roads. If they're carrying devices, these should be put away until they've reached their destination. Children must also avoid playing with toys or being distracted by friends. If a friend wants to show them something funny on their phone, there'll be time for that once they've safely arrived.

5 SLOW DOWN

Discuss the importance of waiting instead of crossing immediately. It can be tricky to judge the speed of traffic and spot obstacles that could cause a trip or a fall. For safety, children must stop and think before they get to the kerb and should always walk – not run – when crossing the road. They should avoid crossing until they're certain they have plenty of time. Even if traffic seems a long way off, it could still be approaching very quickly.

6 STOP BEFORE THE KERB

Teach children to stop before reaching the kerb – not right at the edge of it. Halting before they get to the kerb allows them to see if anything's coming, whereas getting too close to traffic is dangerous. If there's no pavement, children should stand back from the road's edge but ensure they can still see approaching traffic.

7 CROSS SAFELY

Children should always find a safe spot to cross the road, prioritising zebra crossings or pelican crossings, footbridges and subways. Find a place where they can see traffic coming from both directions. Avoid crossing near junctions, bends in the road, or obstacles that block their view, instead moving to somewhere they can see and be seen. Remind them to use their eyes and ears together when checking the road, as sometimes they can hear traffic before they can see it. Looking and listening while crossing helps them quickly spot traffic, including cyclists and motorcyclists driving between other vehicles.

8 PARKED VEHICLES

Crossing between parked vehicles is very dangerous. Teach children to use extra caution if crossing in this way, and, ideally, avoid it altogether. They should use the outside edge of a vehicle as if it were the kerb, waiting and checking for traffic before moving. They should ensure vehicles aren't about to move, by looking for drivers in the vehicles and listening for engines running – but remember that electric vehicles may move off silently. They should always make sure there is a gap between any parked vehicles on the other side, so they can reach the pavement.

9 REVERSING VEHICLES

Children must never cross behind a reversing vehicle – it's extremely dangerous. Remind them to look for white reversing lights and listen out for warning sounds. Can they hear the engine sound or a radio playing inside the vehicle?

10 WAIT FOR THE BUS TO LEAVE

When getting off a bus, children must wait for it to leave before crossing so they can have a clear view of the road in both directions. This also allows them to see and be seen by other road users. Crossing near large vehicles is particularly dangerous and should be avoided.

Meet Our Expert

THINK! is a year-round national campaign that aims to encourage safe road behaviours – whether we're driving, cycling, horse riding or walking – with the aim of reducing the number of people killed and injured on the UK's roads each year. Find out more at: <https://www.think.gov.uk/education-resources/>



#WakeUpWednesday®

The National College®

X @wake_up_weds

f /www.thenationalcollege

@wake.up.wednesday

@wake.up.weds

Users of this guide do so at their own discretion. No liability is entered into. Current as of the date of release: 30.04.2025



Bookmark

Volunteer with Bookmark and
help a child like me learn to
read.

Help a child learn to read

This year our school is working with Bookmark, a children's literacy charity that links schools with volunteers to provide children with extra reading support.

You can help a child develop the reading skills and confidence they need for a fair chance in life. Two hours a week, for 12 weeks.

As a Bookmark volunteer, you'll help your community and make a huge difference to a child.

Registered Charity No. 117768

**SIGN UP
TODAY**



[bookmarkreading.org/
volunteer2f](https://bookmarkreading.org/volunteer2f)

Could you volunteer to help a child with their reading? Our school is working with Bookmark, a children's literacy charity, to provide our pupils with extra reading support. As a volunteer, you'll come into school to read and play fun, literacy games with the same child for 30-minute sessions, twice a week. We're looking for people who could support a minimum of two children a week, across 12 weeks. Sign up now to help children in your local community. Please feel free to share this volunteering opportunity with your own networks. You can find out more and sign up here: www.bookmarkreading.org/volunteer2f

Number Champions

1 2 3 4 5

fun + skills = confidence



VOLUNTEERS NEEDED

School Maths Volunteers

- One-to-one weekly sessions
- Working with Year 2 and Year 3



Would you enjoy...



- helping children improve their confidence in maths?
- using games and activities to make maths fun?

Are you...

- available one afternoon a week during school hours?

Contact Lorraine for more information:

✉ lorraine@numberchampions.org.uk

☎ 07918 410 847

Find out about us at:

www.numberchampions.org.uk



Training
provided

LOOKING FOR SPORTS AND CREATIVE CLUBS AND OPPORTUNITIES FOR YOUR CHILDREN?

CHECK OUT THE ADS ON THE NEXT FEW PAGES FOR SOME OF THE GROUPS LOCALLY AVAILABLE TO OUR YOUNG PEOPLE.

Camden Family Learning



Tales and Tumbles

Free Fun Sessions for Parent/Carers, Babies and Toddlers with Singing, Yoga and Stories

Queens Crescent Library

1:30pm-2:45pm

Once a month

13th February

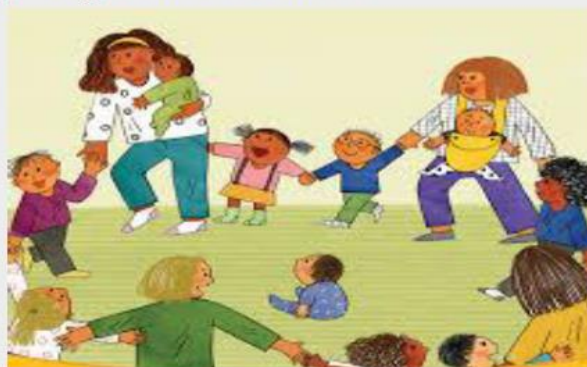
13th March

10th April

8th May

5th June

3rd July



For more information call
Alison on 07876 651950 or just show up



JOIN US!

Action Youth Boxing Intervention (AYBI) provides community-based boxing skills training for children and young people. Sessions are FREE and involve a mixture of boxing and fitness training. No prior experience necessary.



CHILDREN'S BOXING WITH AYBI

Have fun, get fit, build confidence and make new friends! Sessions are facilitated by our skilled coaches and mentors

FREE
DROP-IN
CLASSES



Mondays & Tuesdays 4:30PM - 6PM



Saturdays 10:45AM - 11:45AM



Ages 8+

@aybi_cic www.aybi.org 181 Mansfield Road, London NW3 2HP





Join us at our arty little wellbeing space. A calmer social place for 12-18 year olds. Bridging the gap between school and the weekend. We have art materials and workshops, books and graphic novels, free refreshments, retro board games... A space to relax, catch up on homework, chat and eat noodles! Register with us, using the form on the back then find us in the gym room on Friday afternoons.

Text or email Li for our monthly programme: 07523 533490
li@creativehealthcamden.com

Every Friday from January 10th 2025
Fridays 4pm - 5.30pm - doors open from 3.30pm
www.creativehealthcamden.com

The Gym, Kentish Town Health Centre Bartholomew Road, NW5 2BX

Supported by Camden Council Culture Service with funding from the Cultural Education and Learning Support Fund



**TREASURE
BOXING CLUB**
EST 2020

VRU

MAYOR OF LONDON
VIOLENCE REDUCTION UNIT

**FREE
BOXING
CLASSES**

**THURS
DAYS**

CAMDEN ACTIVITY PROGRAM

5PM



**CHILDREN
6-12 YEARS OLD**

**VENUE: STEVE SMITH HALL PEABODY - CUMBERLAND
MARKET REDHILL STREET NW1 4AX**

**EMAIL FOR WEEKLY SIGN UP FORM AND REGISTRATION INFO:
INFO@TREASUREBOXINGCLUB.COM**

**NO PARKING NEAREST TUBE: GREAT PORTLAND STREET, MORNINGTON
TERRACE, CAMDEN TOWN AND WARREN ST. NEAREST BUS: 88 AND 24**

TERM TIME ACTIVITIES FOR CHILDREN & YOUNG PEOPLE IN CAMDEN LEISURE CENTRES



Lessons and Courses

We offer a huge range of quality swimming lessons and courses suitable for children of all ages.

Swimming is a vital life skill that everyone should have. We offer Swimbies classes for babies from 3 months – 4 years, Adult and child classes which are suitable for under 4s as well as Foundation and Development Classes for over 4s. Weekly classes run in each of the following centres.

Kentish Town, Swiss Cottage and Pancras Square.

Book your place at www.better.org.uk/lessons

Swim For All

Available Monday – Sunday

Enjoy a swim with your child during our Swim for All sessions at **Swiss Cottage, Kentish Town, Pancras Square and Oasis.**

Public swimming times may vary please view your local pool programme

www.better.org.uk/bookings



Junior Gym

Junior gym is dedicated sessions where teens and older children aged between 11-17 years can access the gym and get active, junior members also get inclusive access to swimming.

| Centre | Times |
|----------------|---|
| Kentish Town | Weekdays: 11:00-13:00 & 15:00-17:30 |
| | Saturday: 13:00-15:00 |
| | Sunday: 14:00 – 16:00 |
| Swiss Cottage | Weekday: 9:00 to 18:00 Weekends: 9:00 to 17:00 |
| Pancras Square | Monday-Sunday: 10:00 – 12:30 |

Memberships

Whether you want to make a one off payment or monthly payment we have a wide range of memberships on offer Pay and Play Junior U18s: **£6.55 for the year/ Pay and Play Over 16s: £49.50/Monthly junior: £19.50** or Concessionary: **£14.80**
www.better.org.uk/memberships

Soft Play

Monday – Sunday

With multi-layered climbing frames, colourful ball pits and elaborate mazes, our soft play areas are certain to keep young ones busy.



Talacre Community Sports Centre (under/over 5s): 09:00 to 18:00 (Weekdays) and 9:00 to 13:45 (Weekends)

Swiss Cottage Leisure Centre (under/over 2s): 09:00 to 19:00 (Weekdays) and 08:30 – 16:30 (Saturday) 8:30 – 15:00 (Sunday).

| Age | Non-member | Standard member | Concession member |
|---------------|------------|-----------------|-------------------|
| Under 5s & 2s | £7.50 | £5.40 | £2.70 |
| Over 5s & 2s | £8.80 | £6.15 | £3.20 |

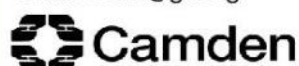
Contact Us: Pancras Square: pancras.square@gll.org

Kentish Town: kentishtown@gll.org

Swiss Cottage: swiss.cottage@gll.org

Talacre: talacre@gll.org

Oasis: Oasis@gll.org



Free Football Sessions Running Round Camden

See below for details of session venues and times—including Friday's on the Fleet pitch



@ARSENAL_IN_THE_COMMUNITY

POSITIVEKICKS@ARSENAL.CO.UK

SUPPORTED BY OUR PARTNERS



OPEN SPACES TIMETABLE



OPEN SPACES TIMETABLE

THE SESSIONS BELOW ARE ALL FREE OF CHARGE AND OFFER A SAFE, INCLUSIVE ENVIRONMENT FOR CHILDREN AND YOUNG PEOPLE TO ENJOY SPORT.

MONDAY

| COMMUNITY SESSION | AGE GROUP | TYPE | POSTCODE | START | END |
|-------------------|-----------|-------|----------|--------|--------|
| Elthorne Park | 7-12 yrs | Mixed | N19 3NF | 4.30pm | 5.30pm |
| Elthorne Park | 13-16 yrs | Mixed | | 5.30pm | 6.30pm |
| Rosemary Garden | 7-13 yrs | Mixed | N13DU | 5.00pm | 6.30pm |
| Rosemary Garden | 14-16 yrs | Mixed | | 6.30pm | 8.00pm |
| London Fields | 7-12 yrs | Mixed | E8 4PD | 5.00pm | 7.00pm |

TUESDAY

| COMMUNITY SESSION | AGE GROUP | TYPE | POSTCODE | START | END |
|-------------------|-----------|-------|----------|--------|--------|
| London Fields | 7-12 yrs | Mixed | E8 4PD | 5.00pm | 7.00pm |
| Harvist Estate | 8-11 yrs | Mixed | N7 7NB | 4.30pm | 5.30pm |
| Harvist Estate | 12-16 yrs | Mixed | | 5.30pm | 6.30pm |
| S. Lukes | 8-11 yrs | Mixed | EC1V 9NR | 4.30pm | 5.30pm |
| S. Lukes | 12-16 yrs | Mixed | | 5.30pm | 6.30pm |

WEDNESDAY

| COMMUNITY SESSION | AGE GROUP | TYPE | POSTCODE | START | END |
|-------------------|-----------|-------|----------|--------|--------|
| Kings Square | 8-11 yrs | Mixed | EC1V 3QU | 4.30pm | 5.30pm |
| Kings Square | 8-11 yrs | Mixed | | 5.30pm | 6.30pm |
| Westbourne | 8-11 yrs | Mixed | N7 8AX | 4.30pm | 5.30pm |
| Westbourne | 12-16 yrs | Mixed | | 5.30pm | 6.30pm |
| Woodberry Down | 13-18 yrs | Mixed | N4 2RJ | 6.00pm | 7.30pm |
| Elthorne Park | 7-12 yrs | Mixed | N19 3NF | 4.30pm | 5.45pm |
| Elthorne Park | 13-16 yrs | Mixed | | 5.30pm | 6.30pm |

THURSDAY

| COMMUNITY SESSION | AGE GROUP | TYPE | POSTCODE | START | END |
|-------------------|-----------|------------|----------|--------|--------|
| Andover Estate | 7-12 yrs | Mixed | N7 7RQ | 4.30pm | 5.30pm |
| Andover Estate | 12-16 yrs | Mixed | | 5.30pm | 6.30pm |
| Crouch Hall Court | 8-11 yrs | Mixed | N19 4EP | 4.30pm | 5.30pm |
| Crouch Hall Court | 12-16 yrs | Mixed | | 5.30pm | 6.30pm |
| Mabley Green | 11-18 yrs | Girls Only | E9 5HW | 5.00pm | 7.00pm |

FRIDAY

| COMMUNITY SESSION | AGE GROUP | TYPE | POSTCODE | START | END |
|-------------------|------------------|------------|----------|--------|--------|
| Rosemary Garden | 7-12 & 12-14 yrs | Mixed | N13DU | 5.00pm | 6.30pm |
| Rosemary Garden | 14-16 yrs | Mixed | | 6.30pm | 8.00pm |
| Paradise Park | 7-12 yrs | Mixed | N7 8PF | 4.45pm | 6.00pm |
| Paradise Park | 13-18 yrs | Mixed | | 6.00pm | 7.15pm |
| Woodberry Down | 7-12 yrs | Mixed | N4 2RJ | 4.30pm | 6.30pm |
| Woodberry Down | 13-18 yrs | Mixed | | 6.30pm | 7.30pm |
| Fleet | 7-13 yrs | Mixed | NW3 2QT | 4.30pm | 6.00pm |
| Fleet | 14-18 yrs | Mixed | | 6.00pm | 7.30pm |
| William Tyndale | 14-18 yrs | Girls Only | N1 2DL | 5.30pm | 7.30pm |

SATURDAY

| COMMUNITY SESSION | AGE GROUP | TYPE | POSTCODE | START | END |
|-----------------------|-----------|------------|----------|---------|---------|
| Arts and Media School | 8-11 yrs | Girls Only | N4 3QL | 9.00am | 10.15am |
| Arts and Media School | 11-16 yrs | Girls Only | | 10.20am | 11.45pm |

WE WELCOME CHILDREN AND YOUNG PEOPLE OF ALL FOOTBALL ABILITIES WITH SESSIONS BEING DELIVERED IN AN INFORMAL MANNER RATHER THAN STRUCTURED TECHNICAL COACHING SESSIONS. MOST SESSIONS WILL INCLUDE A WARM UP, FUN GAMES AND MATCHES.



**SIGN UP
HERE**

POSITIVEKICKS@ARSENAL.CO.UK

@ARSENAL_IN_THE_COMMUNITY

The Young Magicians Club is the number one place for 10-18 year olds who are interested in magic.

Members are invited to exclusive monthly workshops at the world-famous Magic Circle Headquarters, where the best Magic Circle magicians teach, encourage and inspire. There's no better way to learn magic, build confidence and meet new friends.

Members also receive our bi-monthly magazine, 'Secrets', packed with tricks, reviews and interviews, together with access to the online archive featuring hundreds of back issues!





The Young Magicians Club is a youth initiative of The Magic Circle, the most famous magic club in the world.

It's the number one place for 10-18 year olds who are interested in magic to learn, build confidence and meet new friends.

For over 25 years, the Young Magicians Club has used its vast knowledge, experience and connections within the industry to teach, encourage and inspire the magicians of the future.

Members who choose to graduate to The Magic Circle when they reach 18 years old receive audition advice and special discounts.

HOW TO JOIN

Annual Membership from just £30

One-off Joining Fee £20

Welcome pack includes:
Certificate, Badge, Membership Card,
Exclusive YMC Notebook & Pen, Extra Magazine
and over £50 worth of magic tricks!



www.youngmagiciansclub.co.uk/join
chair@youngmagiciansclub.co.uk

MATT EDMONDSON
TOM ELDERFIELD
ROMAN ARMSTRONG
JACK GLEADOW
MARC KERSTEIN
LUKE OSELAND
JAMES MORE
OLLIE MEALING
TROY
JAKE ALLEN
STEPHEN BARRY
JACK VOGLER
PRESTON NYMAN
MICHAEL JORDAN
ADAM BLACK
DOM CHAMBERS
EDWARD HILSUM
STEVEN BRIDGES
DAVE LOOSLEY
RYLAND PETTY
HARRY DE CRUZ
ALEX HANSFORD
BEN HART
STEVE DELA
JULIUS DEIN
LAURA LONDON
MEGAN SWANN
WILL HOUSTON
PATRICK GIBSON
ANDI GLADWIN
MANDY FLETCHER

THE YOUNG MAGICIANS CLUB

The Youth Initiative of The Magic Circle

MONTHLY WORKSHOPS
At The World Famous Magic Circle Headquarters

MAGIC PACKED MAGAZINE
Featuring tricks, reviews and interviews

EXCLUSIVE COMPETITIONS
Your chance to win BIG bundles of magic

LEARN FROM THE BEST
Lectures from the best Magic Circle Magicians

ANNUAL CONVENTION
A jam packed day of lectures, interviews, dealers
and a star-studded magical gala show.
Including the prestigious Junior Day Competition

www.youngmagiciansclub.co.uk



Wac Arts

Nurturing children & young people's creativity

High-quality, affordable evening & weekend classes for young people

.....

Performing Arts

| Dance
| Drama
| Singing
| Music
| Musical Theatre

Creative & Digital Arts

| Animation
| Art & Design
| Filmmaking

**Age
4 - 30**



wacarts.co.uk

213 Haverstock Hill, London, NW3 4QP



It's
Free



It's
Free

JUNIOR CRICKET COACHING CLUB

Age 7 to 15 Years old Boys and Girls

**Every Sunday
11:00 to 1:00 PM**



**11 to 12 Girls Only
12 to 1 PM Mixed**

**Starting From
2nd February
2025**

Venue

**Maria Fidelis Catholic School
1-39 Drummond Crescent
NW1 1LY**



**REGISTE
R NOW**



- DBS Certified Coaching staff
- ECB level 2 Qualified Coaches
- Female Coaching staff for Girls

Mobile : 07717765932 , 07464592776

Email: unitedsportingclub@hotmail.com

Travel Info : # Nearest station EUSTON, # Bus 168,253.390.# free parking on the street

Supported by



www.unitedsportingclub.com

RUGBY IN REGENTS PARK



**JOIN THE ONLY
JUNIOR RUGBY CLUB
IN CENTRAL LONDON!**



Accredited Club

EVERY SUNDAY THROUGHOUT THE SEASON



07770 753162



regentsparkroyals@gmail.com



regentsparkroyals.com



DANCE CLASS

Music & Movement - Get fit dancing

Location: Royal Free Recreation Club
Fleet Road NW3 2QG

Enquiry/Bookings: 07940394383
gymbodyandmindfit@gmail.com

 **TIME**
9:00 AM

 **DATE**
Thursdays



MENTOR
Val Almeida

REGISTER NOW



MATCH PLAY ONLY FOOTBALL SESSIONS

EVERY THURSDAY 

Has your child ever wished they could turn up to football training and just play matches? Well look no further because now your child's wish has come true! We will be running a brand new weekly football class that is solely focused on the children playing matches. What more could they ask for? Come along and give it a go.

**BOOK NOW FOR A
FREE TASTER CLASS**

- Match Play Only!
- 3v3 | 4v4 | 5v5 Tournaments
- Player Of The Month & Termly Awards
- Organised Friendly Matches With Local Clubs

EVERY THURSDAY - DURING SCHOOL TERM TIME
SESSION TIME: 4:30 - 5:30 PM
6-11 YEAR OLDS (YEAR 2 TO YEAR 6)
FOR BOYS & GIRLS - ALL ABILITIES WELCOME

FLEET PRIMARY SCHOOL - 4G ASTRO
AGINCOURT RD, HAMPSTEAD, NW3 2QT

Website Link
www.prorevo.co.uk

More Information:
 Prorevolution.devel



JOIN THE FUN AT

QUEENS CRESCENT LIBRARY

MONDAY 10.30 AM RHYME TIME

MONDAY 4 PM STORY TIME

WEDNESDAY 4PM CRAFTS

Meet your local councillors



**Jenny
Mulholland**

020 7974 2792

Jenny.Mulholland@camden.gov.uk

Labour and Co-op



**Marcus
Boyland**

020 7974 2792

07815 032 923

Marcus.Boyland@camden.gov.uk

Labour



**Lorraine
Revah**

07798 846 584

020 7974 6775

Lorraine.Revah@camden.gov.uk

Labour

Surgery times

Our advice surgeries are held at the following venues. These are drop-in sessions so there is no need to make an appointment.

Cllr Jenny Mulholland

1st and 5th Thursday of the month

Queen's Crescent Job Hub,
179 Queen's Crescent, NW5 4DS.

1pm to 2pm

For surgery appointments at other times,
please email

jenny.mulholland@camden.gov.uk

or call **020 7974 2792** to arrange a time.

Cllr Marcus Boyland

1st Thursday of the month

Fleet School Fleet Road
Hampstead NW3 2QT

9am to 10am

3rd and 5th Thursday of the month

Queen's Crescent Job Hub
179 Queen's Crescent, NW5 4DS

1pm to 2pm

4th Thursday of the Month

Rhyl School, 196 Grafton Road
London, NW5 4AX

9 am to 10 am

Cllr Lorraine Revah

2nd Thursday of the month

The Gospel Oak Regeneration Hub Site Portacabins of
(former Bacton Low Rise) Wellesley Road, Junction with Vicars
Road – next to St Martins Church, NW5 4PA. 11am to 12pm

3rd Tuesday of the month

Greenwood Centre, 37 Greenwood Place NW5 1LB.

1 pm to 3 pm

This surgery is specifically designed for carers and individuals with
disabilities and is by appointment only. Please call 020 7974 2792 to
schedule an appointment

3rd Friday of the month

Russell Nursery TRA Hall, The Aspern Centre

1 Christie Court, 3 Aspern Grove

NW3 2AB. 4pm to 5pm

4th Thursday of the month

The Gospel Oak Regeneration Hub Site Portacabins of
(former Bacton Low Rise) Wellesley Road, Junction with
Vicars Road – next to St Martins Church, NW5 4PA.

11 am to noon

Please note there are no surgeries in August. If you wish to have a phone, teams or zoom appointment with the Councillor please email the Councillor or call Members Support to have this arranged.

In writing

c/o Member Support, Town Hall, Judd Street, London, WC1H 9JE
or for more information go to camden.gov.uk/democracy

Gospel Oak



Midday Supervisors Free Course

Every Thursday at
Rhyl Community Primary School
Rhyl Street
NW5 3HB

This course is for you if
you want to work in a
school and supervise
children in the lunchroom
and in the playground



Starting Thursday 1 May
9.15-11.15am

Contact your school's
Family Support Worker to book a place
Limited crèche places available

Bengali marketplace event

May

6

Tuesday 6 May, 10am to 2pm



Crowndale Centre
218 Eversholt Street
Mornington Crescent
NW1 1BD



Nearby buses 253, 168, 24, 27, 29, 134, 88, 214



A Bengali community event to share information about the support and services we have in Camden for children and adults who have disabilities or additional needs, and their parents



Bengali lunch provided

To find out more, call René Relph on 020 7974 6236
or email René at rene.relph@camden.gov.uk

Cost of Living Crisis - Camden Support Available



Healthy Start pre-paid card and free vitamins

Do you receive income support? Are you pregnant or do you have any children under the age of four? You may be eligible for a Healthy Start prepaid card. The Healthy Start payments can be used to buy milk, fruit, vegetables, and infant formula. If you are eligible, you may receive: **£4.25 each week from the 10th week of your pregnancy, £8.50 each week for children from birth to one year old, £4.25 each week for children between one and four years old.** [Apply online](#). Pregnant women and children under the age of four are also eligible for free vitamins from children's centres. Find your local children's centre [here](#).

Cost of living crisis advice, support booklet and translated advice

To support residents with the cost of living crisis, Camden have developed an advice and support booklet [which can be downloaded here](#). We have translated posters which signpost to support with the cost of living crisis, help with food, energy bills, mental health and help finding a job into Arabic, Somali, Sylheti, Turkish, Kurdish, Lingala and Swahili. [These can be downloaded on Camden website](#).

Cost of Living Crisis Fund Payment

Camden Council's Cost of Living Crisis Fund is for residents and families facing severe financial hardship and who cannot afford essentials – including food, energy bills, water, electricity and housing.

- The maximum award for a household of any size is £500
- A household can only receive a maximum of two awards in a 12-month period - and the amount you are awarded will depend on your circumstances and household size
- We will prioritise those in greatest need

The support can take many forms including payments into bank accounts, vouchers, help with debt repayments or equipment that will help you to reduce your costs and/or keep warm this winter.

How to apply

Camden want to ensure residents are getting all the help and advice they need to live well in Camden.

If you are a tenant and in financial hardship, speak to your neighbourhood housing officer who will be able to refer you to the scheme and help you get other forms of support.

If you live in temporary or supported housing or have a social worker, speak to your support worker as they can also refer you for a payment and help you get other forms of support.

If you live in the private rented sector, other social housing or own your home and are in financial hardship, [speak to one of our advice partners](#). You can also get help via [Good Work Camden](#), by calling Citizens Advice Camden on 0808 278 7835 or by calling us on 020 7974 4444, option 9 (welfare support).

We can also refer you as school – come and speak to us if you think you are eligible and need our help to access this support (see eligibility criteria below):

Eligibility criteria

You must have lived in Camden for at least six weeks. We will check the council tax database and if you are not registered then we will come back to you for another form of proof such as a bill, bank statement or benefit letter addressed to you at the address you are claiming for. The faster we receive proof of residency the faster the award can be made.

2. No more than two payments will be made per household in any 12-month period. When you apply, we will check records to see how many awards a household has received. If there is more than one adult or family in the household, the application must come from the person responsible for council tax.

3. You must be over 18 to apply, but we will accept applications from 16 to 18 year olds living independently because we know that not all young people are able to remain at home

You must be able to prove that you are in severe hardship or financial crisis

The cost-of-living advice bus

If you're struggling with the cost-of-living crisis and want some help, come along to our advice bus. Run in collaboration with local advice partners, you'll be able to get advice on a range of issues - including money, debt, help finding a job and accessing all the support you're entitled to. In December, you can find the advice bus dates using this link [camden.gov.uk/winterevents](#). To find out more about advice and support, visit [camden.gov.uk/costofliving](#). To find your nearest 'warm welcome' space, visit [camden.gov.uk/warmwelcome](#)

**The
Children's
Society**



Emotional health and well-being support

For Children and Young People aged 6-25

Drop-in sessions taking place each Thursday
between 2.30pm-6:30pm



Camden Beam at
Calthorpe Community Garden
258-274 Gray's Inn Road
WC1X 8LH

Find out more:
childrenssociety.org.uk/beam
Service email address:
CamdenBeam@childrenssociety.org.uk

Come and talk to us...

We listen to parents. We can advise you about your child's development, breastfeeding, parenting, housing, employment and benefits advice. There are local free drop-in 'stay and play' sessions and we can help you find an early education and childcare place. In fact everything you need in the early years to bring up your child.

Come along to your local children's centre and get to know other parents.

If you would like to know more — just ask us.

To find out more about services and support in your area, or just to ask a question, please phone or call in to your nearest children's centre. We do not charge for our services.



Children's_Centre_Collateral_Sure_Start_with_Father_Illustrations_Final_Artwork.indd 1

Children's Centres:

- 1a Children's Centre
1a Rosebery Avenue ECLR 4SR
020 7974 7024
- Regents Park Children's Centre
Augustus Street NW1 3TJ
020 7974 8954
- Harmood Children's Centre
1 Forge Place NW1 8DQ
020 7974 8961
- Agar Children's Centre
Lulworth, Wrotham Road NW1 9SU
020 7974 4789
- Kilburn Grange Children's Centre
1 Palmerston Road NW6 2JL
020 7974 5080

**Pregnant or have
a child under five?**
We can help, come
and talk to us



Find out more:
camden.gov.uk/camdensurestart

Camden Sure Start
Your journey. Our support.



12/06/2018 11:44



Pregnancy & New Born Baby



New Born Baby to 2 Years



Child 2 to 5 Years

Mums, Dads and Carers,
come with your children to
your local children's centre.

Happy, healthy and looking forward to the future? That's what you and your child deserve. It's why Camden has developed a complete range of services, designed to offer support during the first months and years of your child's life.

We're here for the whole family. From the moment you know you're expecting a baby, our services and support will be available to you and your child, right up until birth and for years into the future.

Advice and play activities to support your child's speech and language

What kind of help?

We want you to feel confident as a parent, to be aware of everything that's available for your child's early development. We can help — come and talk to us.

You may be a first-time dad or mum or you could already have a family. Either way, we want to help you and your child to feel secure, healthy and happy.

Some dads and mums are anxious about caring for their baby and how to look after a growing child. Others need help with practical issues like benefits advice, employment or arranging affordable childcare.

Whatever you need, we want to help you and your child get the best start in life.

One-to-one support if you are feeling low, anxious or stressed by family life

Our support.

Midwifery and health visiting services

Information and support about breastfeeding, baby feeding and healthy eating

Stay and play drop-ins and other activities for you and your child to enjoy together

Family support team — if you need extra help

Early education and childcare and childminders

Help to find training and employment and benefits advice

Local services for children with special educational needs and/or Disabilities, visit localoffer.camden.gov.uk

Children's_Centre_Collateral_Sure_Start_with_Father_Illustrations_Final_Artwork.indd 2

12/06/2018 11:44

Camden Children's Centre Services

CAMDEN MHST

MENTAL HEALTH SUPPORT TEAM

Camden's Mental Health Support Team works across Primary schools providing interventions for children and young people experiencing anxiety or low mood.

SUPPORT AND INTERVENTIONS

Individual/Parent led therapy

Group therapy and workshops

Whole class interventions

Parent/carer webinars: including topic on sleep, screen time and anxiety therapeutic conversations.



emotional health & wellbeing in Camden,
for children, young people and their families

WEBINAR SERIES FOR PARENTS AND CARERS OF PRIMARY AND SECOND- ARY SCHOOL AGED CHILDREN AND YOUNG PEOPLE

Topics this year (from now through to June 2025) include...

- Parent Self Care
- Therapeutic conversations with your child and young person
- Sleep
- Screen Time
- Sibling relationships
- Parent-child interactions
- Managing routines
- Supporting Childhood worries
- Anxiety in Adolescence
- Understanding Adolescent Development

See next page for further details of each workshop, when they are and how to book a place...

FLEET PRIMARY SCHOOLS PRACTITIONER

If you are interested in getting help, please contact:
Rebecca Wall —Deputy Head

Camden MHST—Online Workshops for Parents

October 2024-June 2025

Each workshop will last up to 60 minutes and have an optional follow-up of 30 minutes for parents/carers to ask questions or discuss the topic further. Parents and carers can opt in for all topics, or whichever most appeals to them.



To find out more information about each workshop and to sign up for free, please follow Eventbrite link or use QR code above:

<https://www.eventbrite.co.uk/e/mhst-parent-and-carer-online-workshop-series-2024-2025-tickets->

Parent/Child Interactions

How do you spend time with your child? The aim of this webinar is for you as parents/carers to find out more about what makes a positive parent/child interaction and to promote, maintain and increase positive connections with your child. Research shows that a positive relationship has a positive effect on children's physical health (helping brain development), emotional well-being (e.g., positive relationships with the world) and behaviour (e.g., positive relationships more likely to be prosocial). This webinar will help you improve your relationship with your child.

For Primary School Parents/Carers
Tuesday 22nd October, 12.00-13.00
Q and A: 13.00 to 13.30

Screen-time

Screen-time is perhaps a challenge for all parents of this technological age? In this Webinar we will provide you with the latest research as well as explore why this topic can be challenging for families alongside some helpful ideas's parents might want to try.

For Primary and Secondary School Parents/Carers
Tuesday 26th November AM&PM
12.00-13.00, Q and A: 13.00 to 13.30

Sleep

How does your child sleep? Why is sleep so important for children and young people? Research shows that children with sleep issues have more problems. Approximately 1 in 5 adults have some difficulty sleeping. This webinar will help you understand more about how to help your child to improve his/her sleep and well-being.

For Primary and Secondary School Parents/Carers
Tuesday 17th December, 12.00-13.00
Q and A: 13.00 to 13.30

Managing Routines

Consistent routines that are developmentally appropriate can help motivate your child, provide structure and help with overall family functioning - not to mention making that bedtime routine that little bit easier! In this webinar we will be talking about how to establish and maintain routines for all family members.

For Primary School Parents/Carers
Tuesday 28th January, 12.00-13.00
Q and A: 13.00 to 13.30

Understanding Adolescent Development

Adolescence is a time of great change. Young People at this stage of life are going through physical, hormonal, emotional, relational and psychological change. This webinar aims to provide a helpful overview of these key changes so that Parents/Carers can be better equipped to make sense of and support their young person's development.

For Secondary School Parents/Carers
Tuesday 25th February, 12.00-13.00
Q and A: 13.00 to 13.30

Having therapeutic conversations with your child

How to have therapeutic conversations with your child? Having open, thoughtful and caring conversations with your child can be very beneficial for a child's emotional well-being and their social and problem-solving skills. Join us for this Webinar to learn more about how to have these important conversations with your child.

For Primary and Secondary School Parents/Carers
Tuesday 25th March AM & PM
12.00-13.00, Q and A: 13.00 to 13.30

Sibling Relationships

The relationship between siblings is a big part of the children's learning and development. Siblings grow up in the same environment, share the same parents, siblings and similar experiences. Sibling relationship is going to last longer than any other relationship. Siblings play an integral part in the families' lives. Join us for this Webinar to learn more about how the sibling relationship can impact on the child's learning and development.

For Primary and Secondary School Parents/Carers
Tuesday 29th April, 12.00-13.00
Q and A: 13.00 to 13.30

Supporting Childhood Worries

What is worry? What do children worry about? Why? The aim of this webinar is to help you as parents and carers understand more about the different worries children typically have and to learn some strategies for managing your child's worries (e.g., facing anxiety-provoking situations, problem solving, refocusing attention and relaxation/mindfulness techniques). This webinar will help you if you find yourself struggling to manage your child's worries.

For Primary and Secondary School Parents/Carers
Tuesday 20th May, 12.00-13.00
Q and A: 13.00 to 13.30

Anxiety in Adolescence

What is anxiety? What are young people worried about at the moment? Teenagers are often more reluctant to talk about and work on their anxiety as this can make them feel embarrassed or self-conscious. The aim of this webinar is to help you as parents and carers to learn more about the different types of anxiety typically experienced by teenagers. This webinar will help you understand how to support your teenager in overcoming worry and anxiety.

For Secondary School Parents/Carers
Tuesday 24th June
12.00-13.00, Q and A: 13.00 to 13.30

Parent and carer counselling service

Are you stressed or worried and need someone to talk to?

Are you a parent or carer with a child in a Camden school or children's centre?

Life is complicated and sometimes feels like an uphill struggle. Talking with a counsellor can help untangle thoughts and feelings.

- The parent and carer counselling service is FREE
- Counselling sessions are confidential
- Counselling takes place in schools and children's centres

Counselling is arranged by completing an application form or by phoning or emailing the co-ordinator.

We can also support with the referral process from in school. If you would like any support with this please come and speak to Rhian or Don.



PCCS co-ordinator, SEN and psychology services

Children, schools and families, Camden Council, Crowndale Centre
218 Eversholt Street, London NW1 1BD
Telephone: 0207 974 6500
Email: pccs@camden.gov.uk



Camden Early Help



Everyone needs a little help sometimes. If you're feeling worried about your child, or you want to make a change in your life, Camden Early Help is here for you, your children and your whole family.

- ▶ Free support service for families with children aged 0 to 19 in Camden
- ▶ Practical and emotional support with a range of life issues if they are starting to feel overwhelming
- ▶ Working with you and your family to help make whatever changes you want to make
- ▶ Helping you and your family develop friendships and feel connected with your community.

Early Help



As well as family workers, there's lots of other options:

- ▶ Early Help Family Group Conference – bring together a circle of family members, friends, neighbours or community members to help solve problems
- ▶ Parenting programmes – a range of programmes for parents to be, and parents with children from 0-19 to help you feel confident and positive about your parenting role
- ▶ Activities – to enjoy time together as a family
- ▶ Early Help Play – support to access holiday play schemes, breakfast clubs, after-school clubs, and free early education and childcare places*
- ▶ Employment advice and welfare rights – access to our advisors to help with benefits and all things work-related
- ▶ Connections to housing support and homelessness services
- ▶ Connections to community organisations in your area.



How do I get Early Help?

You can contact us today, or you can talk to someone in your life that you trust. This might be your child's teacher or nursery worker, your GP or health visitor, your housing or tenancy support worker or youth worker.

They can contact us on your behalf, and then you can work with us if you would like to.

If it feels like it's time to make a change, Camden Early Help would love to be by your side so the little things don't become big things.

Other formats

If you require this leaflet in large print, Braille or in another language please contact us.

Find out more

T: 020 7974 3317 (9am to 5pm, ask for Early Help)

E: LBCMASHadmin@camden.gov.uk

For more information about Early Help visit:

camden.gov.uk/earlyhelp

Sure Start 020 7974 8961
camden.gov.uk/surestart

* free childcare places for eligible 2 year olds



Produced by Creative Services 1251 23

What's Early Help?

Early Help is about family and being here for when families are experiencing things that are starting to feel overwhelming. Early Help is about whatever is important to you, whatever is causing you to feel distress or worry. Early Help is for families with children of any age, from 0 to 19. It's voluntary and your choice whether to have it or not.

What can you help with?

Every family we work with is unique. We work with families experiencing relationship breakdown or conflict, violence in the home, children showing distressed behaviour, support for first time parents, housing, rent or money worries, difficulties at school, worries about a child's health or development, managing changes in circumstances, grief and bereavement, and mental health problems. Often it's a combination of many things. But whatever it is that you and your family want to change, we are here to work with you - to help you and your family get to where you want to be.

What does Early Help do?

There are lots of Early Help services in Camden, so we'll work with you to figure out the one you think will be most helpful to you and your family. You can watch a video about Early Help made by a Camden young person here: [youtube.com/user/CamdenCouncil](https://www.youtube.com/user/CamdenCouncil)

Early Help services include:

Sure Start

A full range of help and support in your local children's centre if you are pregnant or have a child under 5.

Early Help Co-ordinators

Someone to have a chat with to see how we can help and what Early Help service might be most useful.

First Step Early Help

A team of family workers who will work alongside you for up to 12 weeks, and help you and the network of people around you to feel on the right track.

Families in Focus

A team of family workers who will work alongside you for 6 to 12 months.

Transformation Team

A team of family workers who will work alongside you for 12 months plus.

Youth Early Help

A full range of help and support for families with children aged 11 plus and young people.



Every Early Help team will:

- ▶ Be with you through the tough stuff
- ▶ Listen to you and your family – we'll be led by you
- ▶ Focus on what's important to you and your family, and what a good life might look like for you
- ▶ Work with you to find out what's going well and what feels strong
- ▶ Work with you to explore and make sense of the things you want to change
- ▶ Make a plan with you, your children and your family so the changes can start to happen
- ▶ Make sure everyone involved works together to help you and your family best.



Free 24/7 urgent mental health support for young people

The NHS has set up free telephone lines across London for young people in distress, open all day, every day, and staffed by trained mental health professionals. They can provide immediate support, or refer people to other sources of help if needed.

Find your local crisis line number [here](#).



URGENT MENTAL HEALTH SUPPORT 24/7

Worried about your mental health?

Young people and their parents can get urgent support and advice from trained NHS mental health advisors, any time, day or night.

Every mental health trust in London has put in place a telephone line for people in urgent need - including children, young people and their parents. The lines are free to call and open 365 days a year.

| AREA | BOROUGHES COVERED | 24/7 SUPPORT NUMBERS |
|----------------------|---|----------------------|
| North West London | Brent, Hillingdon, Harrow, Kensington & Chelsea and Westminster | 0800 023 4650 |
| | Ealing, Hounslow and Hammersmith & Fulham | 0800 328 4444 |
| North Central London | Barnet, Camden, Enfield, Haringey and Islington | 0800 151 0023 |
| North East London | City & Hackney | 0800 073 0006 |
| | Newham | 0800 073 0066 |
| | Tower Hamlets | 0800 073 0003 |
| | Barking & Dagenham, Havering, Redbridge and Waltham Forest | 0800 995 1000 |
| South West London | Kingston, Merton, Richmond, Sutton and Wandsworth | 0800 028 8000 |
| South East London | Croydon, Lambeth, Lewisham and Southwark | 0800 731 2864 |
| | Bexley, Bromley and Greenwich | 0800 330 8590 |

FREE SCHOOL MEALS STATUS

For this year, all children from Reception—Year 6 will be able to receive a free school meal thanks to the Mayor of London's programme and you don't need to do anything to apply for it—simply let us know your child will be taking up the offer and that is it—nothing to fill in or apply for. However, this is different from 'Free School Meal Status'. This is still something you need to apply through Camden for. It is really important that you do this as this measure dictates a lot of the funding schools are allocated. To ensure we receive the correct funding we need all children who are eligible for this status to complete the process. You may be entitled to this status and therefore Fleet will receive additional funding if you receive one of the following:

- Income Support
- Income-based Job Seeker's Allowance
- Income-related Employment and Support Allowance
- Universal Credit – your

household income must be less than £7,400 a year (after tax and not including benefits)

- Child Tax Credit with a taxable income of no more than £16,190 and not in receipt of Working Tax Credit
- the Guaranteed Element of State Pension Credit support from the National Asylum Support Service (NASS)

If you receive Working Tax Credit you will not be entitled to free school meals status unless you have:

- stopped work in the last 4 weeks; or
 - reduced your hours to less than 16 hours in the last 4 weeks
- Free school meal entitlement will mean that you will not have to pay for school lunches and will receive concessionary rates for clubs and trips. It is also important for you to apply, as the school receives extra funding.

<https://accountforms.camden.gov.uk/freeschoolmeals/>

Please ask Lisa in the office for help applying if you need it. Fleet relies on accurate funding to support the education of all our children.



Clue

There are hundreds of different ones out there, you will find them near home printers




and when not hiding inside printers they usually look like this





www.recycle4charity.co.uk



Recycle 4 Charity Treasure Hunt

Attention to all children and teachers!

Find some empty ink cartridges and bring them to the school to turn them into gold!




Your school will receive money for them, and you will help the environment with your recycling!

Do you have any used printer cartridges lying around at home? Send them into the school office!

Parent group: Families, Food and Feelings

The Enhanced Healthy Living Service (EHLS) runs quarterly 6-week parent groups for Camden and Islington parents/carers of children aged 5-17 who struggle with excess weight. The group focuses on psychoeducation and strategies around boundary setting, healthy modelling, emotional eating and encouraging a healthy relationship with food. Referrals are accepted by professionals and parents can also self-refer via the brandoncentre.healthyliving@nhs.net email address.





FREE SCHOOL CLOTHING



- ✓ **SAVE YOUR FAMILY MONEY**
- ✓ **STOP SCHOOL CLOTHES FROM GOING TO LANDFILL**
- ✓ **MAKE CAMDEN A MORE SUSTAINABLE PLACE**

We'd love you to come along to use our School Uniform Exchange. Pick up good quality, pre-loved school clothing for free, to save money and help the planet.



WHEN AND WHERE TO FIND US:

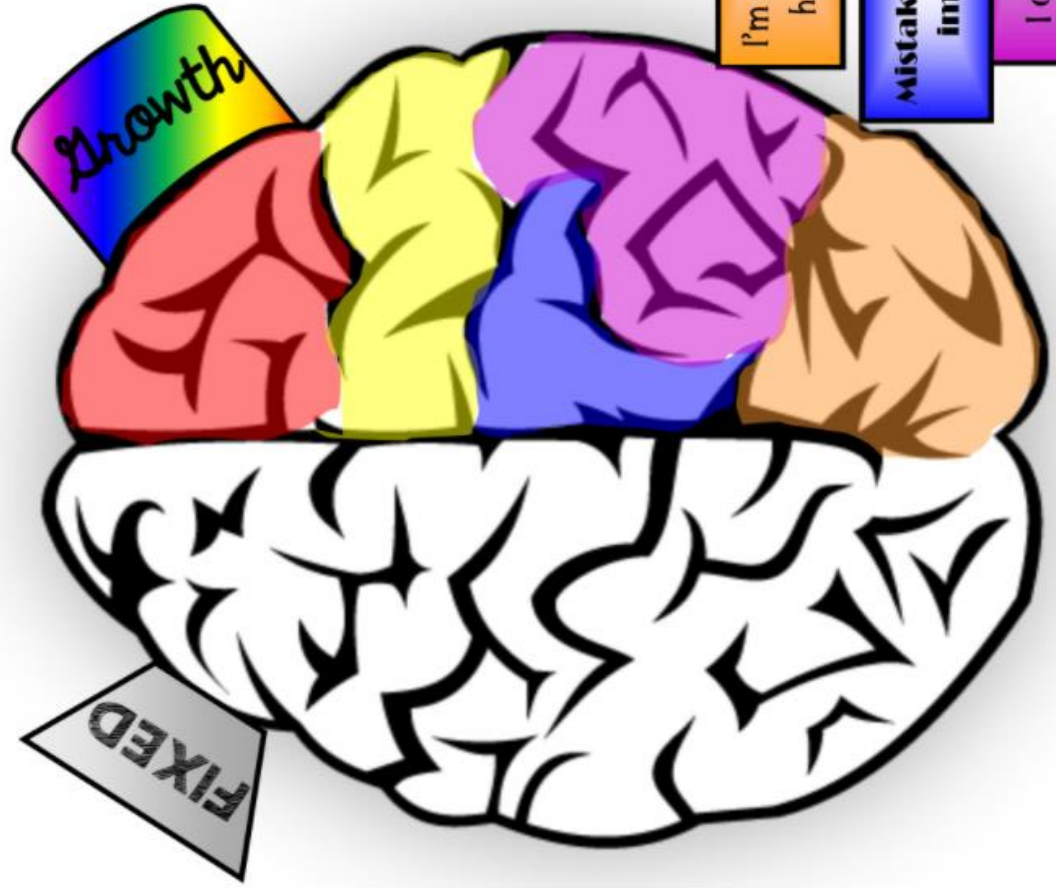
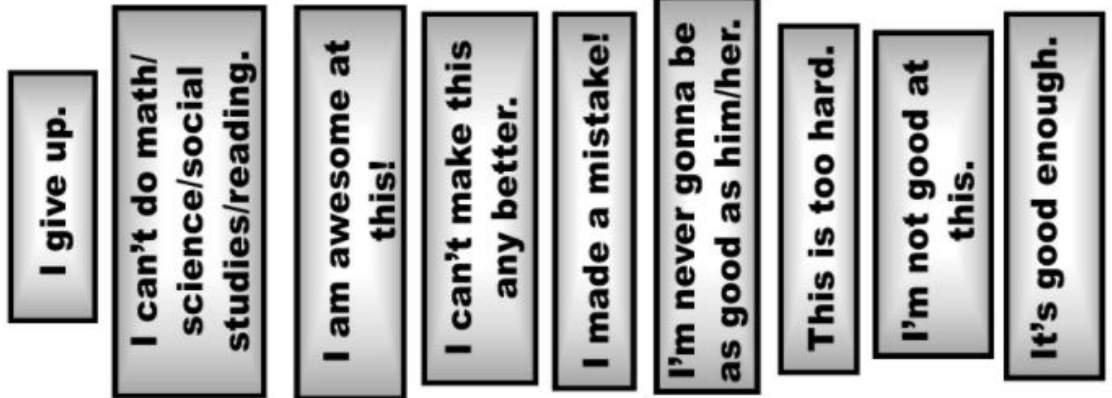
Rhyl Community Primary School
Monday-Thursday 9.30-11.30am
Grafton Road, NW5 4AX



COMBAT CLIMATE CHANGE AND SAVE FAMILIES MONEY



Change your words Change your *Mindset*



Gender equality: guide for families

What are gender stereotypes?

Fixed and widely held ideas about roles and behaviours that society thinks appropriate for men and women, girls and boys. For example that boys are more active, adventurous and tough and that girls are more caring, emotional and concerned with appearance. These stereotypes are everywhere in children's lives – in clothes, toys, books, media and language.

Children learn what those around them expect of them as a girl or a boy and their brains adapt. What might look like a child's free choice of toys, friends, subjects or jobs is heavily influenced by the messages the child has absorbed from birth about what's suitable for their gender. **The good news is that we can change these messages.**



'That's not very ladylike'

'Man up'



Why are they bad for everyone?

Gender stereotypes can limit children's choices, behaviour, aspirations and even achievement. They are bad for individuals and for society. They steer girls and boys in different directions – feeding different subject choices, different job options and even different health outcomes.

Study and work:

- In childhood, construction and science toys are often sold 'for boys'. At A level, only 10% of computing and 22% of physics students are girls. At work, less than 10% of engineers are female.
- In childhood, children learn that dolls are 'girls' toys' and that women do more caring work. At work, fathers are twice as likely to be turned down in a request for flexible working. Only 11% of nurses are male.
- When it comes to children's career ideas, the gender divide is as strong at age 4 as at 14.



Health and mental health:

- In childhood, boys learn not to show their feelings except through anger. Boys are 6 times less likely than girls to seek Childline counselling about suicidal thoughts and feelings. Men account for 75% of all suicides.
- 1 in 4 women in the UK will be a victim of domestic violence in her lifetime.

'You cry like a girl'

FAQs

- *But aren't girls and boys just different?*
Despite popular perceptions, there is no credible scientific evidence of natural difference in interests or skills between genders. Children learn from the stereotypes surrounding them what is considered 'normal' for their gender – and their choices adapt accordingly.
- *What's wrong with girls and boys liking different things?*
Nothing, so long as it is down to an individual child's preference rather than pressure to conform. Girls and boys are more alike than different.
- *Are you saying I should stop telling my daughter how pretty she is?*
No – but if her appearance is what your daughter is most often praised for then she may start to think that society values her looks above her other qualities.
- *What about boys?*
Statistically, boys are more likely than girls to achieve lower grades in school, to go to prison and not to seek help for mental health problems. Harmful gender stereotyping contributes to these outcomes.

Our aim: that children be free to make their own way as individuals, unlimited by gendered expectations



www.liftinglimits.org.uk

Gender stereotyping: what can we do about it?

Toys:

- Building blocks, puzzles and construction develop spatial awareness. Dolls and imaginary play help to develop empathy and communication. Introduce a range of toys for all children.
- Thinking about buying presents? For help avoiding gifts which reinforce gender stereotyping see the Let Toys be Toys website at www.lettoysbetoysof.org.uk – especially their Gift Guides and recommended retailers.

Opportunities to challenge gender stereotypes:

- In role-play games with younger children, who plays what roles?
- Talk to children about what they are seeing on TV – in what roles are male and female characters shown? How are female and male characters dressed?
- Look for positive role models of female leaders, women in sport, men in caring roles.

Language:

- Think about the messages language can suggest – e.g. 'man up' suggests that boys should not show their emotions. Never use 'girl' or 'girlie' as an insult.
- 'We need a strong man to open that' 'I can't do that with these nails' – throwaway comments can have a powerful impact on children.
- Use 'humankind' rather than 'mankind' or 'firefighter' rather than 'fireman' – avoid using the masculine to refer to everyone.

Expectations and aspirations:

Beware assumptions which might influence children's aspirations – e.g. by suggesting certain jobs are more for women or men or by assuming a future role as carer for girls and breadwinner for boys.

Books:

- Children's books still send very gendered messages about male and female roles.
- Look for books with strong female leads and boys in caring roles – for boys and girls.
- Swap 'he' and 'she' where male-dominated.
- Use books as an opportunity to question roles and attitudes.

Around the home:

- Who do children see doing what work around the house?
- What chores are children given at home – are they different for girls and boys?
- Is different behaviour expected of sons and daughters?
- If newspapers and magazines show women and men in stereotypical roles, question these so that children don't assume that's just the way the world is.

Attitudes:

- Teach children that caring roles are rewarding and important – and ensure that boys can see themselves in caring roles.
- All emotions are for everyone! Don't discourage boys from crying or expressing how they feel.
- What praise are children given? e.g. repeated praise of girls as pretty and boys as clever or strong teaches children what society expects of them.

Clothes and shoes:

- Are girls wearing clothes or shoes which are more delicate – which they need to keep clean or which hinder them in climbing or kicking a ball?
- Think about slogans, colours and the messages they send.

Similarities and differences:

- Don't set up girls and boys as 'opposite' or separate – there are more similarities between them than differences.
- Beware treating girls or boys as uniform groups.
- Friendships between genders are to be encouraged.



www.liftinglimits.org.uk