

Message from the head:

This week I have been talking with some of the governors and also other head teachers about the challenges many of us face including cramped and inadequate housing, financial pressures, ill-health and lack of access to medical support and many others. These undoubtedly have an impact on our children's education and also is often a factor affecting attendance and attainment. This year we have committed a portion of the school's funding to create the role of 'Family Support Worker', which Lisa Tan is doing 3 days a week. I know Lisa has already supported many of you already this term with signposting and helping complete various applications or write letters. She is shortly going to be meeting with some of you around attendance and punctuality, you should have received letters if this is the case. We want to work together with you and understand if there is anything we can do to support you to ensure your children are able to make the most out of their school and educational experiences. If you need any help, specific to school, or to do with issues facing you outside of school, please do come and speak with Lisa or myself and we will do all we can to help you. We are a community school, and you are our community. We want to do all we can to remove any barriers you face that could impact you or your children's education or wellbeing. Have a wonderful weekend and we will see you on Monday.

Louise's fundraiser for Brain Research UK

To many of the Fleet Community, especially those of you who have been here a while, you will recognise Louise and Tom (not to mention their children Isabelle and Mickey!). Both have been amazing supporters of the school over the years.



The Talacre sessions your children enjoy currently from Y2 to Y6 are all thanks to Tom.

Many of you will know about Louise's battle with Brain Cancer over the last few years and the amazing fund raising she has done running marathon after marathon. Louise needs our support again as she is about to face her next battle with the disease. I know the Fleet community will come through for her. Typical of Louise, instead of thinking of herself at this difficult time, she is looking to raise more money for Brain Research UK fund research that can do more for others in her situation in the future. Please visit her Just-Giving page to show your support. We're all thinking of you Louise. You are an inspiration.

https://www.justgiving.com/page/louise-looney-1698691155679?utm_medium=fundraising&utm_content=page%2Flouise-looney-1698691155679&utm_source=email&utm_campaign=pfp-email

Winter Fair Online Donation and Auction



The online donation and auction page for the Winter Fair is now live! Please visit the link below to either donate money to the school fundraiser, bid on some fantastic auction prizes, or buy raffle tickets for our raffle this year. Top prize is £100 cash! Auction and raffle prizes will be updated as and when they become available so make sure to check in regularly!

go.rallyup.com/fleetwinterfair2023

Parent Workshops



We have managed to arrange a number of parent workshops this term based on feedback and requests from parents. See below for details.

Tuesday 21st November: Supporting Children with Challenging behaviour (including 'zones of regulation')

23rd & 30th November: ESOL English Classes Assessment—speak to Lisa if interested in taking ESOL English classes

Wednesday 6th December: 10 minutes peace—coffee morning/workshop @ 9-9.30am

Wednesday 13th December: Digital Inclusion Bus drop in 9-11am

Wednesday 31st January: Creating healthy boundaries around screen time and healthy media

Punctuality Award



Lates have more than doubled this week with a total of 52. That is far too many, and often the same children. We understand that at the moment the buses are on diversions which can lead to delays for some but if you choose to come to a school not within easy walking/scooting/cycling distance then you make a commitment to get here on time. Please factor in the bus issues and get earlier transport while this is an issue. Thanks to the majority who get here everyday on time ensuring they don't disturb others' learning. Well done Year 2, this week's winners with 4 lates.

Attendance Award

Attendance is down again this week with a number of bugs circulating at the moment. We are currently overall for the year at 95%. For the week however, we are very low at 90.2%. Only year 5 and reception made it above 95% this week with Year 5 winners on 96.3%. 4 classes were below 90% which is incredibly low. We know the majority of you ensure that your children come in as often as possible and we ask for your continued support. This is the time of year when children may get sniffles, coughs and sore throats. They do not need to stay off school for minor illnesses and indeed it simply puts them at an educational disadvantage if they miss lessons when they could manage the day in school, maximising their learning and taking their mind off the fact they might have woken up not feeling 100%. Hopefully we see an improvement next week back to the levels seen previously this term.

Lunch Menu: 20th—24th Nov

Meat Free Monday

Vegetarian:
Cheese & Tomato Pizza
Pasta Salad
Cous Cous
Vegetables of the day
Lemon Drizzle Cake

Wednesday

Meat/Halal:
Roast of the day
Vegetarian:
Veg Wellington
Stuffing & Gravy
Mashed/Roast Potatoes
Vegetables of the day
Fresh Fruit

Friday

Meat/Halal:
Fish Fingers
Vegetarian:
5 Bean Chilli
Chips or Rice
Tomato Sauce
Vegetables of the day
Oaty Cookie

Available Daily

Freshly Cooked Jacket
Potato
Freshly Baked Bread

Tuesday

Meat/Halal:
Beef Burger
Vegetarian:
Bean Burger
Potato Wedges
Vegetables of the day
Fruit Jelly with
Mandarins

Thursday

Meat/Halal:
Chicken Korma
Vegetarian:
Veggie Bolognaise
Rice & Garlic Bread
Vegetables of the day
Apple Sponge Cake

Please remember to let the office know if you want your child to change to or from school lunches so you are charged correctly

Parents Meetings for Year 1 to Year 6, now open for bookings

We are now taking bookings for Parent Teacher meetings using our online booking system

<https://fleetprimary.schoolcloud.co.uk/>

Here you will be able to book an appointment with your child's class teacher, view or amend it.

Please ensure we have your correct details on our system and are signed up to ParentHub, as the booking system is linked with it. If you have any problems, please contact the office on 0207 485 2028.

It is important that you attend so that you can hear about your child's progress and how they are getting on in class.

Year 1—29th & 30th November

Year 2—28th & 30th November

Year 3—29th & 30th November

Year 4—29th & 30th November

Year 5—29th & 30th November

Year 6—29th & 30th November



JOIN US FOR

FLEET PRIMARY SCHOOL'S WINTER FAIR!

Kick off the festive season with a magical evening, packed with fun games & activities, delicious snacks, hot food, festive drinks, a range of homemade crafts & giftware, pre-loved books, toys & music!

**SATURDAY 2ND DECEMBER
3.30-6.30PM**

FREE ENTRY & lots of FANTASTIC prizes to be won!

Can't make it? Don't worry, you can still buy raffle tickets, bid on our amazing auction prizes and/or donate using the QR code.

Thank you for your support!



URGENT CHRISTMAS APPEAL FROM CAMDEN FOODBANK

PLEASE HELP US TO FEED ADULTS & CHILDREN IN FOOD POVERTY

What food is needed and why?

Camden Foodbank make up longlife emergency food parcels to support local people in food crisis. In order to make up well balanced food packages we need any of the items listed below:

Targeted food needed by Camden Foodbank at Christmas time:

Tinned Meat	Tea/Coffee	Longlife Juice
Tinned Fish	Sugar	Longlife Milk
Tinned Fruit	Cereal	Cooking Oil
Tinned Tomatoes	Baked Beans	Shampoo
Pasta Sauce	Christmas present for Children	Shower Gel/Soap
Pasta/Rice	Christmas Biscuits	Toothbrush
Washing up Liquid	Christmas Sweets	Toothpaste
Washing Powder		Toilet Paper

What are the different ways you can donate food to help local people at Christmas?

- I. Purchase targeted food listed above and **Deliver in person,**
- II. Purchase targeted food listed above and **Send through Internet shopping.**

How to donate money?

INDIVIDUAL GIVING THROUGH JUST GIVING for Camden Foodbank click on <https://checkout.justgiving.com/c/3445418> 100% of your donation will go directly to Camden Foodbank. We would grateful if you can also select **GIFT AID** which will increase your donation

FOR CHEQUES/DIRECT DEBITS AND OTHER WAYS OF GIVING <https://camden.foodbank.org.uk/give-help/donate-money/>

EVERY £40 RECEIVED IN CASH DONATIONS PAYS FOR ONE EMERGENCY PACKAGE*



A well balanced 3-day emergency for 1 person could mirror the photo above. (Cost per package may vary according to availability*).

Where can the food be delivered to and what times? *

Deliver Food in Person:

Day	Time	Address
Tuesday & Friday	11.30 am to 3.00 pm	Camden Foodbank, 14 Pratt Mews, London NW1 OAD.
Wednesday	5.00 pm to 7.00 pm	Camden Town Methodist Church, Wesley Hotel Camden Town, 89 Plender Street, London NW1 0JN.
Saturday	10.00 am to 12.00 pm	Camden Town Methodist Church, Wesley Hotel Camden Town, 89 Plender Street, London NW1 0JN.
Sunday	10.00 am to 12.00 pm	Camden Foodbank, 14 Pratt Mews, London NW1 OAD.

Send by Internet Shopping:

Any Tuesday or Friday 11.30 am to 2.00 pm Camden Foodbank, 14 Pratt Mews, London NW1 OAD.

Camden Foodbank is closed for Christmas from 23rd December 2023 and open again 9th January 2024. *



Camden foodbank
14 Pratt Mews
London NW1 OAD
07871 248704 (Food deliveries only)
info@camden.foodbank.org.uk
www.camden.foodbank.org.uk
Registered Charity in
England & Wales (1084806)



Stars of the week!



Nursery

For your fantastic woodwork! You had a clear idea about what you wanted to achieve and used the tools carefully and thoughtfully to bring your vision to life. We loved the princess you made! Well done!

Reception

For having such a positive and enthusiastic attitude everyday! You settle to activities really well and make such worthwhile use of your learning time. It's an absolute pleasure having you in the class!

Year 1

For all your brilliant reading this term. It is lovely to see how much you enjoy books and I'm always impressed with the effort you put into guided reading sessions. Well done!



Year 2

For your fantastic attitude this week! We've really noticed your fab focus on the carpet and how hard you're working. You're also doing your best to help other. Well done, keep it up!

Year 3

For your effort in maths surrounding our topic on addition and subtraction. You have been really focussed and resilient! Well done superstar!

Year 4

For your wonderful attitude! You try your best in all areas and do it with a positive and 'can do' attitude! We're so lucky to have you with us and you make us very proud!



Well done to these children who have been chosen by their class teachers to be the 'Star of the Week' - Well done to all these children, and to all the rest who might not have been picked this week but could have been.



Year 5

For a fantastic first week at Fleet! You have come in with a positive attitude and have been engaged in your learning everyday. We are thrilled to have you join our wonderful class!

Year 6

For your brilliant attitude to our Christmas Show preparation. It's been great to see you being positive, creative and taking direction during our first rehearsals. Keep it up!

Term Dates for 2023-24

AUTUMN TERM

First day of term	Wednesday 6 th September 2023
Half term (inclusive)	Monday 23 rd Oct – Friday 27 th Oct 2023
Last day of term	Nursery- Wednesday 20 th December 2023 Reception- Year 6- Thursday 21 st December 2023- close @ 2pm

SPRING TERM

First day of term	Tuesday 9 th January 2024
Half term (inclusive)	Monday 12 th Feb – Friday 16 th Feb 2024
Last day of term	Thursday 28 th March 2024 – close at 2pm

SUMMER TERM

First day of term	Tuesday 16 th April 2024
May Day Bank Holiday	Monday 6 th May 2024 - school closed
Half term (inclusive)	Monday 27 th May – Friday 31 st May 2024

STAFF INSET DAYS – SCHOOL CLOSED

	Autumn Term	Spring Term	Summer Term
1 st half term	Monday 4 th and Tuesday 5 th September 2023	Monday 8 th January 2024	Monday 15 th April 2024
2 nd half term			Monday 10 th June 2024

Please note Nursery and Reception start dates in the Autumn Term differ due to home visits and phased transition. You will receive your child's start date as part of the welcome pack and will be discussed at the meeting prior to the Autumn Term start. |

Fleet Facts!



Well done to all these children who have passed their Fleet Facts test this week!

Year 2: Logan, Seun, Leo, Suhayb, Grace D, Salamah, Waed, Se-
ra, Zaina, Myrah, Sovann, Yusuf, Fatima

Year 3: Max, Musa, Albie, Inaaya

Year 4: Abida, Alfie, Amaani, Amine, Ayman, Ellie-Mae, Frankie, Kimberley, Leo, Lir, Lola,
Mason, Michaela, Robyn, Rocco, Shivi, Thaddeus

Year 5: Skylar, Jake Sullivan, Yacub, Mickey, Jake Sidoli, Shajai, Saaimah, Lenny, Arafat,
Jarod, Daniel, Amreen, Fatma, Lottie, Noah, Marcel

Year 6: Rayn R, Natasha, Millie, Theo, Yara, Tabbie, Hana, Emma, Conor, Alicia, Sienna,
Nadeem, Alea, Yonis, Sufiyan, Ranya

Times Tables Rock Stars of the Term!

Well done to these children who earned the most coins in their class on Times Tables Rock Stars this week!

Year 3: Zara—1,484 coins!

Year 4: Frankie—11,270 coins!

Year 5: Jarod—6,690 coins!

Year 6: Ena—64,539 coins!

Numbots Star of the Week!

Year 2: Rron—15,452 coins!

Dates for your diary this term...

Please bear in mind that occasionally trips may be arranged or cancelled last minute. Where possible we will give as much notice as we can. We need adult volunteers to support on these trips so please do look out for notices on class windows or sent out via ParentHub closer to the date of a trip and contact the office if you are able to accompany. Thank you.

WHOLE SCHOOL EVENTS

21st November	Citizens Advice Session—Contact Lisa for an appointment
21st November	Parent Workshop—Managing Challenging Behaviour @ 9am
23rd & 30th Nov	ESOL Classes Assessment—speak to Lisa for more information
28th November	Parent—Teacher Meetings after school—Y2
29th November	Parent—Teacher Meetings after school—Y1, Y3, Y4, Y5, Y6
30th November	Parent—Teacher Meetings after school—Y1, Y2, Y3, Y4, Y5, Y6
6th December	Parent Workshop—10 minutes peace! @ 9am
11th December	Nasal Flu Vaccinations—opt in—letter will be sent out
13th December	For Parents—Camden Digital Inclusion Bus onsite from 9-11am drop in
15th December	Christmas Lunch
19th December	Infant Class Christmas Parties
20th December	Junior Class Christmas Parties & Junior Talent Show
21st December	Last Day of Term—finish at 2pm (Nursery finish the day before usual time)
9th January	First Day of Spring Term—School reopens
31st January	Parent Workshop—Creating Healthy Boundaries around screen time/media

NURSERY 2023-24

21st November	Trip to Keats Library
30th November	Parent Run Class Tea
8th December	Infant Christmas Show—10am
13th December	Trip to theatre
20th December	Last day of term for Nursery

RECEPTION 2023-24

1st December	Trip to theatre
8th December	Infant Christmas Show—10am

YEAR 1 2023-24

29th & 30th Nov	Parent-Teacher Meetings
8th December	Infant Christmas Show—10am

YEAR 2 2023-24

28th & 30th Nov	Parent-Teacher Meetings
7th December	Parent Run Class Tea
8th December	Infant Christmas Show—10am

Parents Association Events

Sat 2nd Dec	Winter Fair—3.30-6.30pm
Thurs 25th April	International Food Evening
Sat 6th July	Summer Fair

YEAR 4 2023-24

21st November	Cinema—Camden Odeon
22nd November	Trip to Keats Library
24th November	Trip to the CLC
28th November	Sport at Talacre (AM)
29th & 30th Nov	Parent-Teacher Meetings
30th November	Trip to Tower of London
5th December	Sport at Talacre (AM)
12th December	Sport at Talacre (AM)
13th December	Trip to Keats Library
14th Dec	Junior Christmas Show—10am (anyone) & 7pm (ticketed)

YEAR 5 2023-24

20th Nov	Trip to the CLC
21st Nov	Sport at Talacre (AM)
27th Nov	First Aid and Defibrillator Training Workshop
29th & 30th Nov	Parent-Teacher Meetings
14th December	Junior Christmas Show—10am (anyone) & 7pm (ticketed)

YEAR 3 2023-24

22nd November	To the Cinema—Camden Odeon
23rd November	Sport at Talacre (AM)
29th & 30th Nov	Parent-Teacher Meetings
30th November	Sport at Talacre (AM)
7th December	Sport at Talacre (AM)
14th December	Junior Christmas Show—10am (anyone) & 7pm (ticketed)

YEAR 6 2023-24

21st November	Trip to Hackney Empire (back late—around 4pm)
27th November	Trip to the Royal Institute
29th & 30th Nov	Parent-Teacher Meetings
14th December	Junior Christmas Show—10am (anyone) & 7pm (ticketed)



Fleet Primary School Calendar Competition 2024

This year's theme...A Wonderful World!

The theme this year is 'A Wonderful World' and is all about the natural world and protecting it. Art can be inspired by nature, animals, plants, insects, birds, ocean life, habitats, protecting the environment or environmentalists—see some of the examples at the bottom of this page.

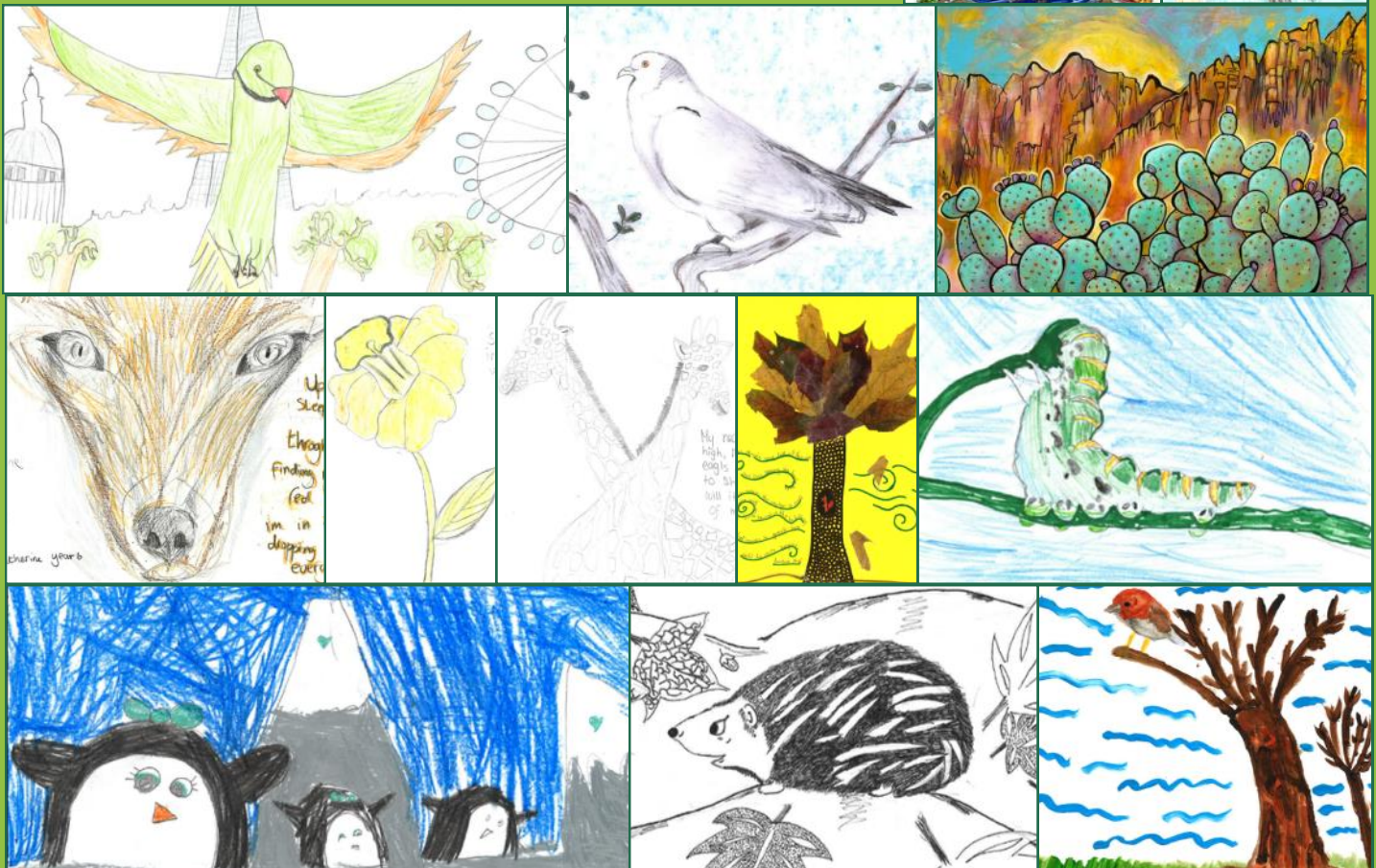
Children can use any art medium in their entries as long as it is A4 in size and they can enter as many times in a term as they want. It is important that they put their name and class on the reverse side of the picture in pencil (don't write in pen and not on the front). They should also include a 'fun fact' about their subject written on the back too which will be included in the final calendar if their image is selected.

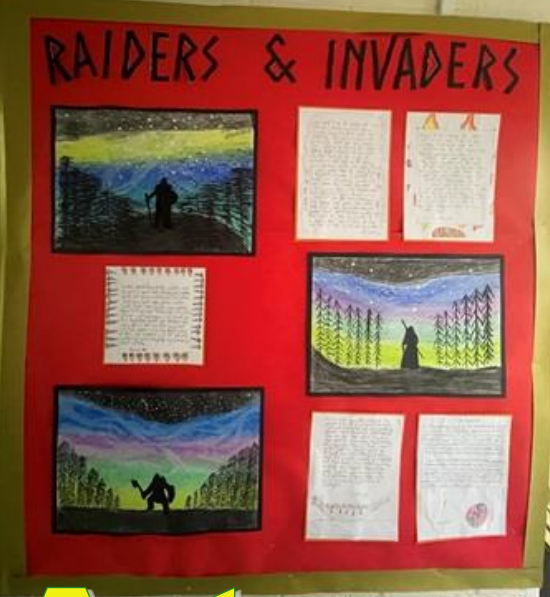
Prizes will be awarded termly, with a selection of entries chosen to go in the calendar for 2024. Entries should be handed in to the school office. We have some very talented artists at Fleet and we can't wait to see the fantastic pieces the children come up with. Deadline for this term is December 1st Good luck!

July 2023	
Mon	1
Tue	2
Wed	3
Thu	4
Fri	5
Sat	6
Sun	7
Mon	8
Tue	9
Wed	10
Thu	11
Fri	12
Sat	13
Sun	14
Mon	15
Tue	16
Wed	17
Thu	18
Fri	19
Sat	20
Sun	21
Mon	22
Tue	23
Wed	24
Thu	25
Fri	26
Sat	27
Sun	28
Mon	29
Tue	30
Wed	31

Fun Fact: Frida Kahlo was a Mexican artist who painted self-portraits and portraits of other people. She was known for her bold colors and use of symbolism.

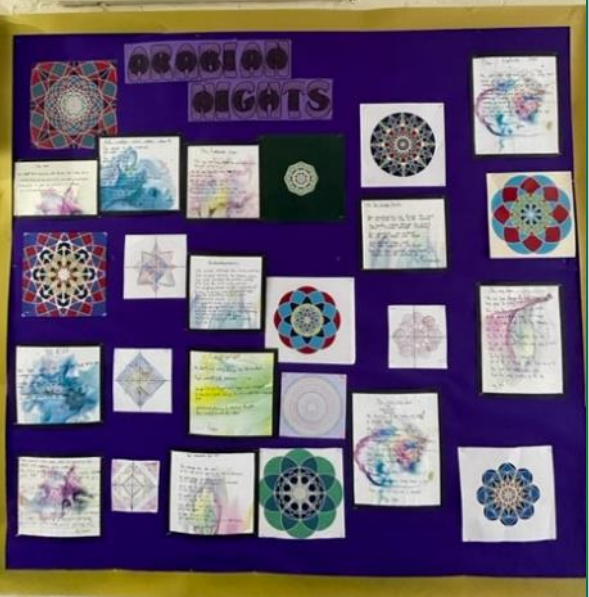
Fun Fact: Frida Kahlo was a Mexican artist who painted self-portraits and portraits of other people. She was known for her bold colors and use of symbolism.





Come and see the displays in the admin block!

Year 6:
Arabian Nights
Year 5:
Raiders & Invaders
Year 4:
Togas to Tunics
Y3 - Fierce Earth



Autumn Term Topics

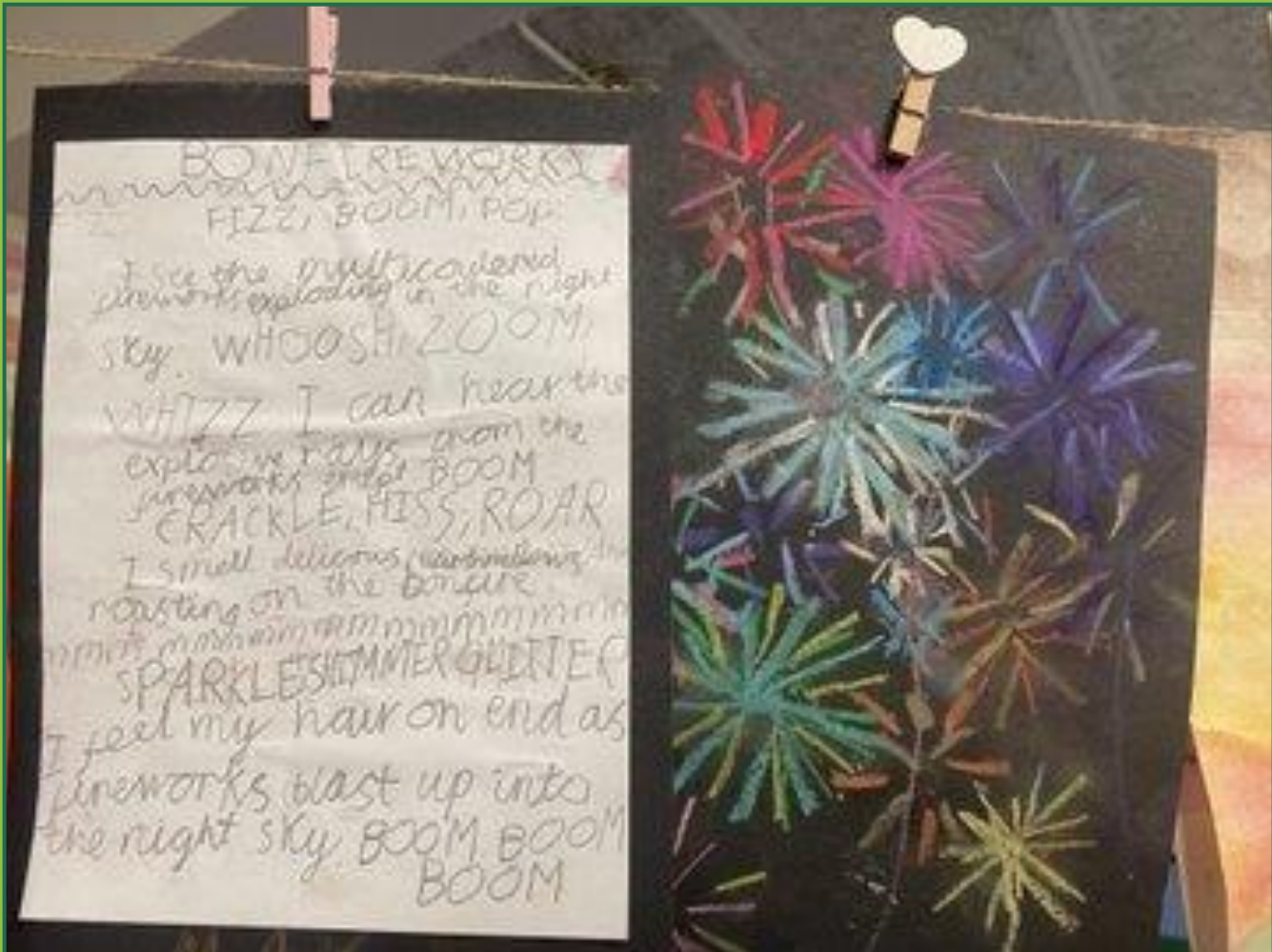
Year 2: All Around the World
Year 1: Lost!
Reception: Super Stories by Sue Hendra
Nursery: Marvellous me and my family tree!

This week at Fleet...

Another busy week approaches the end. Included in this week's newsletter are some pictures from the recent 'stay and play' session in Reception as well as photos from Odd Sock's Day—part of our Anti-Bullying Week celebrations, Forest school, trips to Talacre for Y2 and Y5, Year 6 at the Camden Citizenship Workshops, our Year 5/6 Basketball team (well done to the Boys (4th place) and the Girls (5th) in this week's competition), Buddy reading sessions, science, art and poetry and many other activities that took place this week. Also this week, rehearsals for the Infant and Junior Christmas shows have started in earnest and the school has been ringing out with the lovely sounds of classes practicing the songs and year 6 learning their lines and running through scenes. Make sure to make a note in your diaries of the dates (see page 8) when you can come along to see them. We hope you enjoy the newsletter.



This week at Fleet...



This week at Fleet...



This week at Fleet...



This week at Fleet



This week at Fleet...



This week at Fleet...

