

Fleet Community Notices



Wednesday 21st June 2023



New items this week...

A number of new items this week including message from PTA about fair meeting and possible strike closures (right) and Covid Vaccine bus (below). Latest dates on page 2 (note in red some changes) along with next years term dates on page 3. Page 10 has an advert for a job at Puss in Boots nursery which would work well around school hours while Page 11 has a flyer for 'Perform in the Park' who are putting on shows over the summer holidays. Page 12 & 13 are adverts that have been in before but this coming weekend is the events they advertise. Page 16 has the latest National Online Safety Parent info sheet.

London Zoo Reduced Price Tickets

If you want to visit the zoo as a family the cost can be very high. As a school we visit there a lot to support our curriculum. They do have a reduced price scheme for families on certain benefits. Check out this website to see if you are eligible for the reduced price tickets and to book (these tickets are not available to buy at the gate).

<https://www.londonzoo.org/plan-your-visit/community-access-scheme>

Camden Covid-19 Vaccination Bus

The bus will be visiting QCCA on Ashdown Crescent, opening from Queen's Crescent, NW5 4QE this Saturday 24th June from 11am-4pm.

You can also book or have walk-in appointments available locally from:

- Macey Chemist—68 Mansfield Road, NW3 2HU (access at the rear of pharmacy, off Courthope Road) Monday to Wednesday 9am-2.15pm, Friday 9am-5.30pm
- Sandylight Pharmacy—131 Queens Crescent, NW5 4EG Open Monday to Thursday 10am-2pm, Saturdays 10am-4pm

Parent Workshop Opportunity

Camden Mental Health Support Team (MHST) are excited to be offering a 2-part, face-to-face workshop for parents and carers of primary age children (4-11 years) on:

Monday 10th July 12:15 to 14:15 at the Tavistock Centre &

Monday 17th July 12:15 to 14:15 at the Tavistock Centre

The workshop will explore Emotion Coaching, a parenting approach that supports identifying and validating emotions, while also setting boundaries and limits around behaviour.

How will Emotion Coaching help you and your child?

- To better understand & validate children's emotions
- To respond more helpfully during moments of heightened emotion
- To implement appropriate boundary setting
- To reduce behaviours that you find challenging
- To further improve the parent/child relationship
- To learn from other parents and carers

This is an interactive workshop, which will involve sharing research, learning about Emotion Coaching and practising strategies. We often find that group workshops are a great space to learn from each other

so there will be lots of opportunities to talk about ideas and to think through any challenges that might be around. Please use the QR code below to sign up; this workshop is in two parts so you will need to be able to attend on both dates.



Looking forward to seeing you!
Best wishes, Camden MHST

Summer Fair Message from the PTA

Dear parents,

The summer fair will be July 15th! Come to the planning meeting on Friday 30th June at 8.45-9.30am to help us make it a fun event for all our Fleet families. The winter fair this year raised a grand total of £3106.90 for the school playground improvements so it's for a good cause as well as being a good time for the whole family. Contact FleetSchoolPA@gmail.com or speak with us in the playground if you'd like to chat - we'd love to hear from you.

Many thanks from the Fleet PTA Committee

Upcoming NEU Strikes & possible closure

July the 5th and 7th have been announced as strike days for members of the NEU teacher's union. For previous strike days, with all our teachers members, we have been forced to close. As soon as the teachers have indicated their intention for these days we will make a formal announcement. In the meantime please bear in mind the strong possibility we will be closed on those days.

Better Leisure Concession Membership

Exercise is so important for both physical and mental health—whether that's going for a swim, working out in the gym or going to an exercise class. However, it can be expensive to join a leisure centre and pay for classes/sessions. Better Leisure (who operate Kentish Town Swimming Pool and Talacre) offer concessionary memberships for both adults and juniors which for a small annual cost (adult = £5.90; child = £3.05) get you discounted rates on any booking. You can apply online (link below) for the concessionary membership or do it in person in one of the Better Centres.

Better adult concession:

Membership rate per session:

Swimming: £2.50

Gym: £4.20

Class: £4.00

Better junior concession

Membership rate per session:

Swimming: £1.65

Gym: £3.60

<https://www.better.org.uk/monthly-membership/better-hf-conc>

Appropriate Clothing/Footwear

The weather has been very hot lately and many children are coming in unprepared. All children should bring a water bottle and sun hat to school and have sun cream on prior to arriving.

In terms of footwear, please ensure that the children are not wearing flip flop/crocs/single strapped sandals that can easily come off or restrict climbing/running. As the children are very active at play-times and during PE lessons etc. wearing these type of shoes can and has lead to accidents. In this hot weather we have very little natural shade in the school so sun hats are especially important. Thank you.

Help Please!

We need used 500ml plastic bottles for a year 6 project. There will be a box outside the office to put them in. Don't throw them away, give them to us!



Photo Consent Online Form

We have recently sent out an online photo consent form for you to complete (for each of your children), so that we can ensure that your photo consent preferences are up to date. It is important that you complete the form by Friday 23rd June 2023. Many thanks.

<https://forms.gle/adi8ySGPFvi2HoWb8>

Dates for your diary this term...

Please bear in mind that occasionally trips may be arranged or cancelled last minute. This can happen for any number of reasons and we try, where possible, to give as much notice as we can. We need adult volunteers to support on these trips so please do look out for notices on class windows or sent out via parenthub closer to the date of a trip and contact the office if you are able to accompany. Thank you.

WHOLE SCHOOL EVENTS

26th-30th June	STEAM Week
28th June	Members of School Council out at Wellbeing Champion Event
3rd-7th July	Wellbeing Week
30th June	PTA—Summer Fair Planning Meeting—8.45am-9.30am—all welcome
6th July	Local Councillor surgery—drop in to meet Marcus Boyland (see page 6 for more details)
3rd or 7th July— note change here	Sports Day on the Heath—decision on day pending due to upcoming teacher strike—once we know if we will be open or closed on the 7th a final decision will be made. We aim to let you know as soon as we can.
11th July	Class Swaps—children spend afternoon with next year's teacher
12th July	Teacher drop in sessions after school —any questions about reports or to say hello to next year's teacher
15th July	Summer Fair
21st July	Last Day of School—finish @ 2pm

See the tables here (below) for events specific to individual classes. If you have any questions about these trips, visits or events please speak to the class teacher or contact the office.

NURSERY

6th July	Hampstead Heath
----------	-----------------

YEAR 1

29th June	Class Tea
30th June	Class Assembly @ 10am
4th July	London Zoo
13th July	Central London Mosque
18th July	Hampstead Heath

YEAR 2

23rd June— date change	Class Tea
23rd June	Class Assembly @ 10am
30th June	London Zoo
13th July	Central London Mosque
14th July	To the Beach

RECEPTION

14th July— changed	Class Assembly @10am
13th July— changed	Class Tea
10th July	Hampstead Heath

YEAR 6

19th-30th June	Swimming everyday
27th June	Kew Gardens
4th July	Talacre—Basketball
20th July	Leavers Assembly @ 2pm
20th July	BBQ & Gower Exhibition

YEAR 5

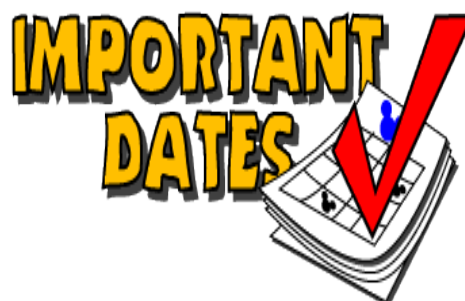
23rd June	Google
29th June	Crick Lab
6th July	Trumpet & Trombone performance on Hampstead Heath Bandstand—t.b.c.
12th July	Hampstead Heath

YEAR 3

4th July	Camden Music Festival
----------	-----------------------

YEAR 4

27th June	Kew Gardens
6th July	Trumpet & Trombone performance on Hampstead Heath Bandstand—t.b.c.
13th July	Central London Mosque



Provisional Term Dates for next Academic Year - may be subject to change...

SCHOOL TERM DATES 2023-2024

AUTUMN TERM

First day of term	Wednesday 6 th September 2023
Half term (inclusive)	Monday 23 rd Oct – Friday 27 th Oct 2023
Last day of term	Thursday 21 st December 2023 – close at 2pm

SPRING TERM

First day of term	Tuesday 9 th January 2024
Half term (inclusive)	Monday 12 th Feb – Friday 16 th Feb 2024
Last day of term	Thursday 28 th March 2024 – close at 2pm

SUMMER TERM

First day of term	Tuesday 16 th April 2024
May Day Bank Holiday	Monday 6 th May 2024 - school closed
Half term (inclusive)	Monday 27 th May – Friday 31 st May 2024
Last day of term	Wednesday 24 th July 2024 – close at 2pm

STAFF INSET DAYS – SCHOOL CLOSED

	Autumn Term	Spring Term	Summer Term
1 st half term	Monday 4 th and Tuesday 5 th September 2023	Monday 8 th January 2024	Monday 15 th April 2024
2 nd half term			Monday 3 rd June 2024

Please note Nursery and Reception start dates in the Autumn Term differ due to home visits and phased transition. You will receive your child's start date as part of the welcome pack and will be discussed at the meeting prior to the Autumn Term start.

Citizens Advice Bureau Camden

We are working with Citizens Advice Camden to try and bring an outreach service here to Fleet where you will be able to book an appointment with an advisor and meet with them here in school. We have the first session arranged for the 21st June, with two further sessions before the summer break planned. This is a bookable time slot so please speak to Lisa in the office who can arrange this for you. If this is successful and a service needed by the Fleet Community then we hope to have regular dates where the advisor will be based here at Fleet to support our families. Due to the source of the funding, for this project this in person service will be restricted to those families living in certain parts of the borough. For any outside the target area of this CAB project we can signpost you to the same support but off-site. See the flyers below and contact Lisa in the office to learn more and enquire about booking a slot.



Citizens Advice Camden Advice North Camden Project

How we can help:

We offer advice on:

- Benefits
- Housing
- Problems at work
- Relationships and family
- Consumer issues
- Budgeting and money issues

and more

The Advice North Camden Project advises people who live in the Hampstead and Wells Camden Trust area of benefit.

This covers the wards of Kilburn, Swiss Cottage, West Hampstead, Fortune Green, Frognal and Fitzjohns, Belsize Park, Hampstead Town and parts of Gospel Oak and Primrose Hill.

For a full list of street names, please visit their website: www.hwct.org.uk/about-us/areas

If you live in one of these areas, please get in touch for more advice.

How to get in touch:

Phone: **07769 225580**

Email: AdviceNorthCamden@camdencabservice.org.uk

This is the project that is going to be available as a face to face meeting here at Fleet—speak to Lisa in the office to book for the July sessions. If you're need is urgent you make contact with them directly using the details shown.



Citizens Advice Camden Debt Advice North Camden Project

How we can help

We can advise on any debt problem, large or small:

- Rent or mortgage arrears, council tax,
- Fuel debt, water debt,
- Court claims,
- Loans, credit cards and overdrafts

- We can check your whole financial circumstances and advise you on your options
- We can help you save money on your bills.
- We can show you which bills are important.
- We can check whether debts need to be paid.
- We can help you deal with creditors.
- We can help you set up a payment plan you can afford.

How to get help

To find out more information or to make a referral please call or email.

Phone : **07464295849**

Email: debtnc@camdencabservice.org.uk

The Debt Advice North Camden Project advises people who live in the Hampstead and Wells Camden Trust area of benefit
[https:// www.hwct.org.uk/about-us/areas/](https://www.hwct.org.uk/about-us/areas/)

This covers the wards of Kilburn, Swiss Cottage, West Hampstead, Fortune Green, Frognal and Fitzjohns, Belsize Park, Hampstead Town and parts of Gospel Oak and Primrose Hill.

If you have issues relating just to debt and the only advice you need is in this area this project is more suitable and you should make contact with the details here.



Interested?



Scan the barcode above OR
email hana.faez.22@ucl.ac.uk



This study has been approved by the University College London ethics committee (ethics@ucl.ac.uk)

Opportunity to participate in research

We want to understand how noisy and social environments make autistic children feel and how this may impact on their wellbeing.

We are looking for:

neurotypical children aged 5 to 8 years
and autistic children aged 5 years and above

to play some games with their parent or caregiver, with and without background sounds, whilst wearing a watch which measures body responses.

Parents will also take part in an interview and some questionnaires to help us understand their child's behaviour on a day-to-day basis.

Where will the study take place?

The study session will take place in the comfort of your own home with a researcher present over video-link.



Dr Sarah White



Dr Katherine Ellis



Hana Ahmad Faez

CAMDEN

Struggling with the rising cost of living?

We're here for you:

- Visit camden.gov.uk/costofliving
- Contact one of the organisations in the Camden Advice Network. Visit camden.gov.uk/can
- Call us on **020 7974 4444 (option 9)**
- Call Citizens Advice Camden on **0808 278 7835**

Meet your local councillors



**Jenny
Mulholland**

020 7974 2792

Jenny.Mulholland@camden.gov.uk

Labour and Co-op



**Marcus
Boyland**

020 7974 2792

07815 032 923

Marcus.Boyland@camden.gov.uk

Labour



**Lorraine
Revah**

07798 846 584

020 7974 6775

Lorraine.Revah@camden.gov.uk

Labour

Surgery times

Our advice surgeries are held at the following venues. These are drop-in sessions so there is no need to make an appointment.

Cllr Jenny Mulholland

1st and 5th Thursday of the month

Queen's Crescent Job Hub,
179 Queen's Crescent, NW5 4DS.
1pm to 2pm

For surgery appointments at other times,
please email

jenny.mulholland@camden.gov.uk
or call **020 7974 2792** to arrange a time.

Cllr Marcus Boyland

1st Thursday of the month

Fleet School Fleet Road
Hampstead NW3 2QT
9am to 10am

3rd and 5th Thursday of the month

Queen's Crescent Job Hub
179 Queen's Crescent, NW5 4DS
1pm to 2pm

4th Thursday of the Month

Rhyl School, 196 Grafton Road
London, NW5 4AX
9 am to 10 am

Cllr Lorraine Revah

2nd Thursday of the month

The Gospel Oak Regeneration Hub Site Portacabins of
(former Bacton Low Rise) Wellesley Road, Junction with Vicars
Road – next to St Martins Church, NW5 4PA. 11am to 12pm

3rd Tuesday of the month

Greenwood Centre, 37 Greenwood Place NW5 1LB.
1 pm to 3 pm

This surgery is specifically designed for carers and individuals with
disabilities and is by appointment only. Please call 020 7974 2792 to
schedule an appointment

3rd Friday of the month

Russell Nursery TRA Hall, The Aspern Centre
1 Christie Court, 3 Aspern Grove
NW3 2AB. 4pm to 5pm

4th Thursday of the month

The Gospel Oak Regeneration Hub Site Portacabins of
(former Bacton Low Rise) Wellesley Road, Junction with
Vicars Road – next to St Martins Church, NW5 4PA.
11 am to noon

Please note there are no surgeries in August. If you wish to have a phone, teams or zoom appointment with the Councillor please email the Councillor or call Members Support to have this arranged.

In writing

c/o Member Support, Town Hall, Judd Street, London, WC1H 9JE
or for more information go to **camden.gov.uk/democracy**

Gospel Oak



REMINDER: This is a 'NUT FREE SCHOOL'. Do not send in any nuts or products containing nuts in packed lunches or for snacks. Thank you.

STOP!

you are now entering a



nut
free
zone

please DO NOT bring
nuts into this area

Fleet Primary School

would like you to join their channel on Parent Hub.

Just tap “Add a School ” in the app and enter the handle below...

@FleetPrimary

The Parent Hub app is FREE to download and use.



What is Parent Hub?



Parent Hub is a FREE app that helps keep you up to date with what’s going on at school. You’ll receive messages, pictures, documents and newsletters, all in one handy place.

Instructions for Parents



1. Download the Parent Hub app from your app store (iPhone or Android).
2. Create yourself an account.
3. Choose “Add a School” and enter the school handle (above).

Visit www.parenthub.co.uk to find out more

Fleet Primary School Calendar Competition 2024

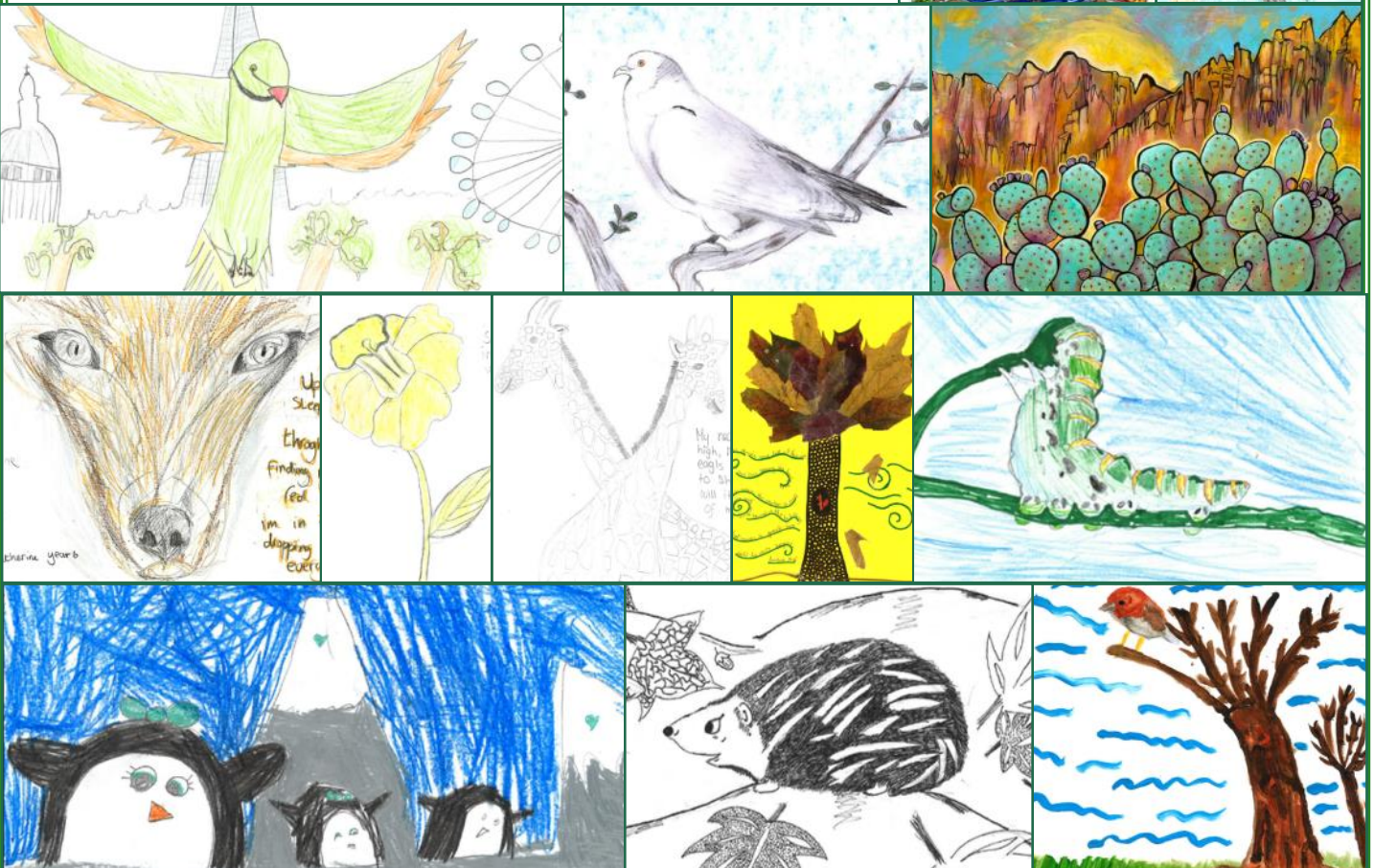
This year's theme...A Wonderful World!

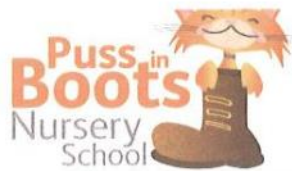
This week in assembly we introduced to the children this year's theme for our annual Fleet Calendar Art Competition. The school's Rights Respecting Ambassadors helped to come up with the ideas.

The theme this year is 'A Wonderful World' and is all about the natural world and protecting it. Art can be inspired by nature, animals, plants, insects, birds, ocean life, habitats, protecting the environment or environmentalists—see some of the examples at the bottom of this page.

Children can use any art medium in their entries as long as it is A4 in size and they can enter as many times in a term as they want. It is important that they put their name and class on the reverse side of the picture in pencil (don't write in pen and not on the front). They should also include a 'fun fact' about their subject written on the back too which will be included in the final calendar if their image is selected.

Prizes will be awarded termly, with a selection of entries chosen to go in the calendar for 2024. Entries should be handed in to the school office. We have some very talented artists at Fleet and we can't wait to see the fantastic pieces the children come up with. Good luck!





Interested in working with a fantastic team at an Outstanding, child centred, local nursery?

This is **initially a term time only, flexible hours post**, but with the potential to become a more permanent role - An ideal introduction to working in Early Years!

Our twice Ofsted Outstanding nursery, named one of UK's best, is looking for a wonderful person to join our team. The applicant should be interested to learn how children learn through play and be able to respond sensitively, fostering children's learning and development. They should be nurturing and caring, and interested in creating a stimulating educational environment.

Enthusiasm and a desire to learn are essential, qualifications desirable but not essential for this role, we can support applicants to embark on relevant study.

We are located in Hampstead, NW3, 5 minutes walk from the Royal Free Hospital. This is a **school term-time only position**.

If you are interested in applying then to find out more please email the nursery manager directly at amelia@pussinbootsnursery.co.uk.

Closing Date for Applications is June 25th. Start date is as soon as possible but we are prepared to wait for the right candidate. Please note that at the moment this role is for a cover member of staff - we can be flexible with start and end times so may suit someone with childcare responsibilities.

Please note that at Puss In Boots we take Safeguarding responsibilities very seriously. Any job offer will be conditional on receiving a check from the Disclosure and Barring Services, and references will be checked.

Perform in the Park Summer Schedule



Evenings in the Park with...

A series of interview-style shows featuring some of your children's favourite household names. Hosted by Riyadh Khalaf* and featuring authors, musicians and West End stars talking about their lives and careers, the 75 minute shows will include a Q&A and, depending on the guest, perhaps a book-reading, maybe some songs and definitely a whole lot of fun. Stars will be announced online as they are confirmed so check performinthePark.uk regularly and be the first to book.



*For most dates

Perform in the Park



LONDON'S FIRST EVER FESTIVAL OF CHILDREN'S THEATRE

Taking place in a 500 seat air-conditioned theatre in Coram's Fields, we're showing live performances all day every day from 22nd July – 28th August.

There are four fantastic children's shows to see plus an all-day café and the playgrounds, sandpits and paddling pool of Coram's Fields so you can make a day of it.

Perform in the Park is hosted by Perform – the UK's leading provider of drama, dance and singing workshops for 4–12 year olds.

Every week, over 8,000 children attend Perform classes at venues across the UK. Classes focus on developing confidence and social skills in a fun and lively way.

Your child can come and try Perform for FREE by visiting perform.org.uk/try



YOUR VISIT

CORAM'S FIELDS

Coram's Fields has been a haven for play since 1936. Located in the heart of London, the park has an exciting mix of play zones for all ages plus two wide lawns for picnics. The adventure play area has a zip wire, a witch's hat swing and one of the largest slides in town. And, with two sandpits and a paddling pool, you may want to pack swim gear! Coram's Fields has a policy of not allowing any adults to enter unless they are accompanied by a child under 16 years old.

THE PERFORM THEATRE

The Perform Theatre is a 500 seat fully-equipped air-conditioned auditorium with flat and tiered seating and designed to be a complete theatre experience. There is a merchandise shop, open air and covered café, buggy park and male and female toilets. Accessible toilets and baby-changing facilities are located just outside the site.

CASTAWAY'S CAFÉ

Open all day every day, the café has seating in open air and covered areas so, no matter what the weather, it's a great place for a snack before or after a performance.

GETTING THERE

Address: Coram's Fields, 93 Gullford Street, London WC1N 1DN. Nearest tubes: Russell Square, Kings Cross St Pancras, Holborn & Chancery Lane. Nearest buses: 17, 45, 6 46 at Gray's Inn Road or the 7, 59, 68, 91, 168 & 188 at Russell Square.

The auditorium opens 30 minutes before the start of each performance.

ACCESSIBILITY

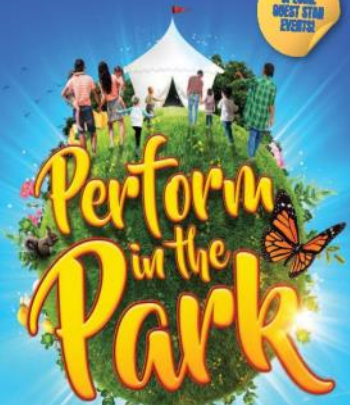
There is step-free access to the auditorium as well as step-free accessible seating areas and spaces for wheelchair users who would prefer to stay in their chair. A step-free accessible toilet is also available.

BOOKING TICKETS

Performances run from 22nd July to 28th August 2023 with shows from 10.30am to 7.30pm each day. Ticket prices start at £14.50. To see the full performance schedule and book, visit performinthePark.uk

*All tickets are subject to the Coram's Fields Restoration Levy.

THE THREE BILLY GOATS GRUFF ELEPHANT & PIGGIE MERMAIDS & PIRATES THE DREAM



MAGICAL CHILDREN'S THEATRE
IN THE HEART OF LONDON

22 JUL - 28 AUG
CORAM'S FIELDS, LONDON WC1N
PERFORMINTHEPARK.UK



The TRIP TRAPPING musical adventure

On a grassy hill, in the middle of the countryside, there lived **THE THREE BILLY GOATS GRUFF!** They never stopped eating and before long they had eaten everything they could get their hooves on!

Hold on to your horns and join the three billy goats on their wild and wacky adventure, as they bravely cross the rickety bridge to greener pastures. But who will they meet along the way as they TRIP TRAP over the bridge?

With lots of catchy songs, funky dances to clap along to and a rapping troll to boot, Lost The Plot Theatrical are proud to present this smash-hit children's musical. An interactive, family fun show and the perfect treat this summer for little ones and the big kids that bring them!

BOOK NOW at performinthePark.uk



A fun friendship story perfect for young audiences

Get ready for a musical experience, straight from the pages of Mo Willems' award-winning, best-selling children's books, that will leave audiences dancing the "Flippy Floppy Floopy" all day!

An elephant named Gerald and a pig named Piggie are best, best, "bestus" (a word Gerald and Piggie made up that means "very best") friends, but Gerald worries that something could go wrong that would end their friendship.

Piggie is not worried at all. She's even happier and more excited than usual because she and Gerald are invited to a party hosted by the Squirrelles, three singing squirrels who love to have a good time. And so begins a day when anything is possible.

Filled with beloved characters and lively songs, **Elephant & Piggie's "We are in a Play!"** is a perfect way to introduce young people to theatre.

BOOK NOW at performinthePark.uk



A swishy-washbuckling musical tale

When Long Gone Silver and his hapless pirates discover Treasure Island, they're not expecting Marina and her super-cool mermaids. Chaos ensues and, after the Sacred Coconut goes missing, it's down to singing parrot Rita Conchita and her friends to save the day.

Mermaids & Pirates is a one-hour musical packed full of calypso-infused songs, salsa-inspired dancing and laugh-out-loud humour.

BOOK NOW at performinthePark.uk



As this is a new production, images are for illustrative purposes only.



A Midsummer Night's Dream rebooted for a new generation

Social media has gone mad for the star-studded engagement of footballer Theseus and his fashion influencer fiancée, Hippolyta. But, when billionaire media mogul Oberon goes up against Titania for the streaming rights to the wedding, a quartet of young celebrities get caught up in his schemes.

The Dream is a one-hour musical filled with infectious songs, exuberant dancing and hilarious dialogue.

BOOK NOW at performinthePark.uk



The Dream is an original musical based on A Midsummer Night's Dream. It does not include any text from the Shakespeare play. As this is a new production, images are for illustrative purposes only.

GIVE RUGBY A GO!

REGENTS PARK ROYALS RUGBY OPEN WEEKEND SATURDAY 24TH & SUNDAY 25TH JUNE



Taking place in Regents Park from 10am close to The Hub Cafe. Everyone aged 4-18 welcome.

Giving boys & girls the chance to:

Meet everyone involved with the most central Rugby club in London.

Play some fun rugby-based games aimed at every level.

Get to know a bit more about rugby & the club.

Ask as many questions as you like.

For more details please contact Greg Forster on 07770 753162

regentsparkroyals@gmail.com

regentsparkroyals.com



RFU

Accredited Club

october gallery

FAMILY ART DAY

FREE ART AND PLAY AT OCTOBER GALLERY

10AM - 12PM

USUALLY

LAST SATURDAY
OF THE MONTH

FREE
DROP-IN
FOR ALL
AGES

SATURDAY 29 APRIL 2023
SATURDAY 27 MAY 2023
SATURDAY 24 JUNE 2023

OCTOBER GALLERY, 24 OLD GLOUCESTER ST.,
LONDON WC1 N 3 AL

JESS@OCTOBERGALLERY.CO.UK
WWW.OCTOBERGALLERYEDUCATION.COM



camdenmusic



Have fun learning to play the drums at Fleet School

- Lessons will take place during the school day
- Taught by an experienced Camden Music Tutor
- Recommended for children in years 2 - 6

Getting started is easy!

Simply apply online

www.camden.gov.uk/camdens-music-service

Sessions starting
from September
2023!

020 7974 7239

camdenmusic@camden.gov.uk



Raise FREE donations for

FLEET PRIMARY SCHOOL

every time you **shop online**

Find us on [easyfundraising.org.uk](http://www.easyfundraising.org.uk)

<http://www.easyfundraising.org.uk/causes/fleetps>

4,300 online sites will give us a free donation
when you shop with them - at no extra cost to you!



Download the easyfundraising App



From National Online Safety

At National Online Safety, we believe in empowering parents, carers and trusted adults with the information to hold an informed conversation about online safety with their children, should the need arise. This guide focuses on one of many issues which we believe trusted adults should be aware of. Please visit www.nationalonlinesafety.com for further guides, hints and tips for adults.

What Parents & Carers Need to Know about AI VIRTUAL FRIENDS

Artificial intelligence – particularly in terms of how it generates natural language – has seen significant development over the last six months, with companies releasing new AI-based software or adding an AI element to existing apps (such as Snapchat, for example). One form of AI to become especially popular has been the 'AI friend' or chatbot, as children eagerly experiment with these new-found computer-generated companions. There are now numerous apps available with this 'virtual friend' functionality, with the likelihood of it being added to other successful platforms soon.

WHAT ARE THE RISKS?

CONTENT AND ACCOUNTABILITY

AI chatbots may not always be able to recognise when content is age inappropriate or harmful and should be filtered out. So there's a possibility that children could be exposed to offensive language or explicit material while conversing with their virtual friend. The companies producing such AI solutions are also unlikely to take responsibility for any content that their algorithms generate.

REDUCED SOCIAL CONTACT

An excessive reliance on chatbots for social interaction could potentially cause a child to begin reducing the amount of face-to-face communication they have, leading to social isolation. If young people become dependent on chatbots to provide companionship, it could very likely hinder the development of their real-life social skills.

LACK OF SENSITIVITY

Chatbot software isn't always sophisticated enough to pick up on subtle emotional cues or recognise signs of distress in children, as most humans would. It might therefore fail to respond appropriately. AI misinterpreting what it's being told or replying insensitively to a young user who's already struggling could potentially impact a child's emotional wellbeing or exacerbate any existing emotional issues.

UNINTENTIONAL BIAS

AI companions are only as reliable as the information they've been programmed with. The algorithms they use, therefore, may unintentionally promote bias, stereotypes or discriminatory behaviour (as many originate from the USA or the UK, for instance, they can display a distinctly western-centric worldview). This could lead to children developing skewed attitudes and behaviours.

COGNITIVE LIMITATIONS

Although many are now undeniably advanced, AI-powered chatbots still have limitations in terms of understanding complex concepts, context and nuance. Depending heavily on chatbots to help with learning or solving problems may stunt the development of a child's own powers of critical thinking, creativity and ability to engage in open-ended discussions with other people.

PRIVACY CONCERNS

Chatbots typically collect data about users, including personal information and conversations. This is ostensibly to improve their performance as they gradually learn about our behaviour – but many experts are warning that there may be significant risks associated with how this information is stored and used (the possibility of potential breaches or misuse by third parties, for instance).

Advice for Parents & Carers

CHAT ABOUT CHATBOTS

If your child is already expressing an interest in AI apps, a relaxed, natural chat should help you to discover which ones they're aware of and how they're using them (or are planning to). Discuss these options with your child and perhaps do your own research to ensure you think they're suitable. Once you're totally happy, you could sit with your young one and begin exploring AI chatbots together.

CREATE A SAFE ENVIRONMENT

If your child is keen to engage with AI chatbots, encourage them to do so in a safe environment: ideally in a shared space at home, so you can easily keep an eye and ear on their progress. Set up appropriate content filtering measures in advance – and gently remind them that you'll be close by and ready to help with any questions or concerns that may arise.

FIND A BALANCE

Work alongside your child to establish the right balance in terms of how they might use AI-powered chatbots – and when it's appropriate. It's important to make sure that children are still getting plenty of opportunities to learn to solve problems for themselves, as well as building their interpersonal skills through face-to-face conversations with friends, family members and teachers.

TAKE CONTROL

As with any form of app or game, when it comes to AI chatbots we'd strongly recommend that you consider employing parental controls (either on the device being used or within the software itself) to manage which apps your child can download and use. This is particularly important for younger children, who may be more at risk of being upset or frightened by inappropriate content.

RECOGNISE THE RISKS

It's unlikely that most children will have even considered the potential risks attached to having a virtual companion. So it's probably wise to explain some of the possible hazards and challenges of AI chatbots to your child. In particular, emphasise that AI isn't a real person (however much it might sound like one) and may occasionally tell them something that isn't entirely impartial or accurate.

Meet Our Expert

A Certified Information Systems Security Professional (CISSP), Gary Henderson is the Director of IT at a large boarding school in the UK, having previously taught in schools and colleges in Britain and the Middle East. With a particular interest in digital citizenship and cyber security, he believes it is essential that we become more aware of the risks around technology, as well as the benefits.



NOS National Online Safety®
#WakeUpWednesday

[@natonlinesafety](https://twitter.com/natonlinesafety)

[/NationalOnlineSafety](https://www.facebook.com/NationalOnlineSafety)

[@nationalonlinesafety](https://www.instagram.com/nationalonlinesafety)

[@national_online_safety](https://www.tiktok.com/@national_online_safety)

Users of this guide do so at their own discretion. No liability is entered into. Current as of the date of release: 21.08.2023



WEEKEND & EVENING

SATURDAY CLASSES

AGES 4-30

PERFORMING ARTS

Classes in Acting, Dance, Singing & Songwriting
£2.50 - £7

CREATIVE AND DIGITAL ARTS

Classes in Art & Design, Animation, Filmmaking & Music Production
£3.75

AGES 8-18

MUSIC TUITION

Classes in Drums, Percussion, Guitar, Keyboard & Saxophone
£3.75 - £4

Bursaries Available

for more information, visit www.wacarts.co.uk
Wac Arts, 213 Haverstock Hill, London, NW3 4QP



WEEKEND & EVENING

SUN-WED CLASSES

SUN

Aerials: Beginner & Int/ Advanced
Wac Arts Actors Company
Wac Arts Dance Company
£6 - £7 (14-30 yrs)

Aerials: Open Class (14-30 yrs)
Tap: ISTD Primary (5+ yrs)
Tap: ISTD Grade 1 (7+ yrs)
£3.75 - £6

MON

TUES

Ballet: ISTD Primary (5+ yrs)
Ballet: ISTD Grade 1 (7+ yrs)
Over 50s Ballet
£3.75 - £6

WAC NITES

Inclusion programme exploring creative and performing arts specifically designed for those with mild/ moderate learning disabilities.

Spark (9-12 yrs)
Ignite (13-17 yrs)
Urban Motivation (18-30 yrs)
£3.75 - £5

WEDS

Bursaries Available

for more information, visit www.wacarts.co.uk
Wac Arts, 213 Haverstock Hill, London, NW3 4QP



GIVE YOUR CHILD AN INVALUABLE LIFE SKILL AT KENTISH TOWN SPORTS CENTRE

Do you want to improve your child's water confidence and give them the ability to swim?

Discover how to kick-start your child's confidence in the water at better.org.uk/swim-school



WHAT'S MORE, YOUR CHILD WILL...

- Develop social skills whilst having fun with new friends
- Feel motivated as they progress through stages
- Improve their confidence with every stroke
- And most importantly, learn a life saving skill

Better Swim School offers affordable lessons for all ages and abilities taught by qualified teachers with our own industry leading swim school programme. Our safe and friendly environment will ensure your child enjoys life long fun in and around the water.

Book now to secure your child's place at better.org.uk/swim-school

Better is a registered trademark and trading name of GLL (Greenwich Leisure Limited), a charitable social enterprise and registered society under the Co-operative & Community Benefit & Societies Act 2014 registration no. 27793R. Registered office: Middlegate House, The Royal Arsenal, London, SE18 6SX. Inland Revenue Charity no. XR43398.



WEEKLY GIRLS SESSIONS

TUESDAYS

TIME: 4.30-6pm

AGES 5-11

COST: FREE

Castlehaven Pitch 1, 23 Castlehaven Rd, NW1 8RU

SCAN QR CODE TO SIGN UP (5-11)



TIME: 4.30-6pm

AGES 12-14

COST: FREE

Castlehaven Pitches 2 & 3, 23 Castlehaven Rd, NW1 8RU

SCAN QR CODE TO SIGN UP (12-14)





GIRLS FOOTBALL DEVELOPMENT



**BOOK A FREE TASTER
CLASS NOW**

- ✓ Skills & ball mastery techniques
- ✓ Agility, balance, coordination & speed
- ✓ Strategy & teamwork training
- ✓ Fun games & friendly matches

EVERY TUESDAY

6-11 year olds
5:30-6:30pm

FIRST CLASS IS FREE!

£6 per week thereafter
Concession rates &
sibling discounts apply

FLEET PRIMARY SCHOOL - 4G ASTROTURF

Agincourt Rd, London, NW3 2QT

Registration Link
www.prorevo.co.uk

More Information
+E: prorevolution.development@gmail.com

Reducing Parental Conflict Online Course

For parents and other adult carers
living together or apart

**strengthening
families
strengthening
communities**

- Do you want to get some new ideas to help you be an even better parent ?
- Would you like to reduce the arguments and disagreements in your family and cope better with stress?
- Would you like to enhance your relationship with your current partner, or improve communication with your ex or the other people helping to raise your children?
- How about learning at a time that suits you?



6 online
sessions



6 group
discussions



Certificate on
completion



Information on
strategies to identify
and reduce conflict



Hear from other
parents and carers



Downloadable
worksheets and
handouts



Videos, quizzes and
interactive activities



Do sessions at a time
that works for you



Weekly support from
our course experts

TOPICS COVERED

- Healthy adult relationships
- Identifying and managing conflict
- Understanding how conflict affects your children
- Enhancing parent-child relationships
- Managing stress, anger and emotions
- Strategies to resolve conflict and create a parenting agreement

GROUP DISCUSSION

- Speak to a course expert and get answers to some of the questions you might have
- Talk about how the strategies are going at home and how to adjust them for you
- Address other difficulties relating to your relationships
- Hear from others about what works for them

Camden parents can claim their free place by contacting Eleni with a contact email and number:
eleni.sfsc@racefound.org.uk

Find out more or register for the course:
sfscparent@racefound.org.uk
www.strengthening-families.net

Home-Start Camden & Islington is a grass-roots charity that supports and empowers parents with children under five who are struggling to cope.

Our volunteers are given bespoke training and matched with a family to best meet the family's needs. They visit the families in their home and provide non-judgmental, peer-to-peer, practical and emotional support.

All volunteers have parenting experience so they know what families are going through. Support is confidential, compassionate and totally responsive to the needs of the family.



To receive support from Home-Start Camden and Islington all we need to know is that you:

- Live in Camden or Islington
- Have a child or children under the age of five
- Be in need of a little extra help

For more information, including on how to self-refer for support, use the details below:

<https://homestartcamdenandislington.org.uk/>

Tel: 0207 099 6041

Email: info@homestartcamden.org

Recruiting
now

HOME
START
Camden &
Islington

Volunteers needed

Are you a mum, dad,
grandparent or carer?

We need people with your
experience to volunteer

If you could give as little as a few hours
a week to support a parent and their
children, then please get in touch.

- Make a difference to the lives of parents and children
- Enhance your well-being
- Free, high quality training

For more details
Telephone: 020 7099 6041



Make their early years count

Being a parent is hard for everyone; for some it can be overwhelming. Some of us have a fantastic support network of family and friends to help, some of us don't.

With your knowledge and experience as a mum or dad, grandparent or carer, you could be the vital support a family needs and make a big difference to their lives.

Find out more:

www.homestartcamdenandislington.org.uk

020 7099 6041 email at info@homestartcamden.org

We're there for parents when they
need us most. Join us and:

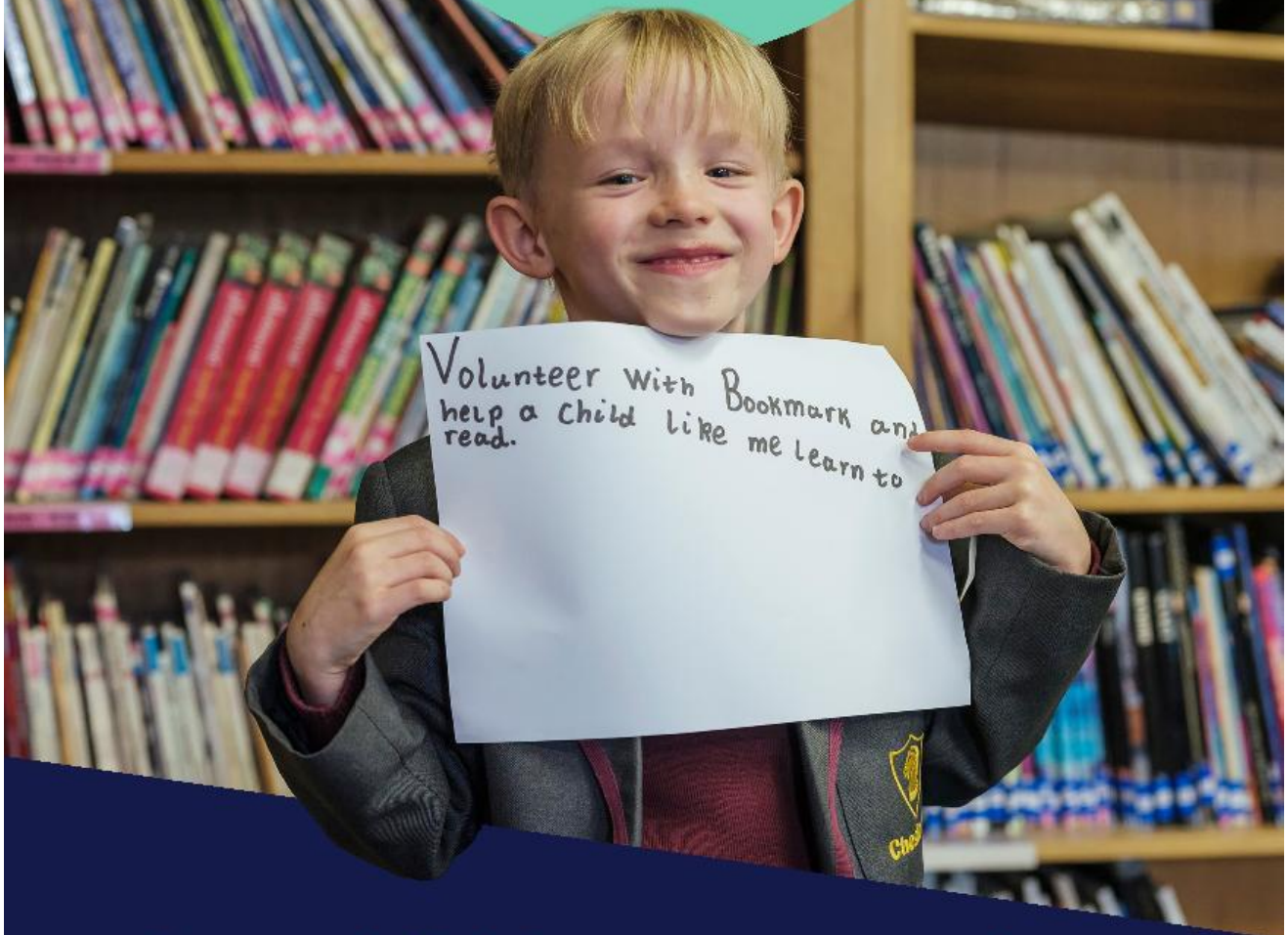
- Gain access to free, high quality training
- Learn new skills
- Enhance your wellbeing
- Make new friends & connect with your community

HOME
START
Camden &
Islington

Charity No. 1086292



Bookmark



Help a child learn to read

This year our school is working with **Bookmark**, a children's literacy charity that links schools with volunteers to provide children with extra reading support.

You can help a child develop the reading skills and confidence they need for a fair chance in life. Two hours a week, for 12 weeks.

As a Bookmark volunteer, you'll help your community and make a huge difference to a child.

Registered Charity No. 117768

**SIGN UP
TODAY**



[bookmarkreading.org/
volunteer2f](http://bookmarkreading.org/volunteer2f)

*Could you volunteer to help a child with their reading? Our school is working with **Bookmark**, a children's literacy charity, to provide our pupils with extra reading support. As a volunteer, you'll come into school to read and play fun, literacy games with the same child for 30-minute sessions, twice a week. We're looking for people who could support a minimum of two children a week, across 12 weeks. Sign up now to help children in your local community. Please feel free to share this volunteering opportunity with your own networks. You can find out more and sign up here: www.bookmarkreading.org/volunteer2f*

Multiply

FREE MATHS SKILLS COURSES

SUPPORTED BY
MAYOR OF LONDON



Having a good level of maths skills can help you find more job opportunities and lead to higher wages or can help you prepare for further study. They also help in everyday life, for example helping children with homework and budgeting.

Launching this year across the UK, 'Multiply' is a new government funded programme to help adults improve their numeracy skills.

If you're aged 19 and over and don't have maths GCSE Grade 4 Grade C or equivalent, you can access free numeracy courses through **Multiply** to build your confidence with numbers and gain a qualification.



We are partnered with the Mayor of London to deliver free Multiply courses designed to fit into your daily life, including evenings and weekends.

Multiply is a brand-new programme designed to help adults in London improve their maths skills to help with everyday life and provide more opportunities.

Multiply courses can help you to:

- Improve your confidence
- Manage your money
- Strengthen skills in the workplace
- Upskill to access better job opportunities
- Gain a maths qualification if you don't have one
- Support your children while improving your own skills
- Access maths if you've found it hard to access before

To be eligible you must:

- Have the right to live and work in UK
- Be aged 19+
- Live in London
- Not have maths GCSE at grade C (or equivalent)
- Have evidence of 3 years of residency in the UK

Are you interested in taking part in Multiply? Simply register your interest

If you have any queries or are an employer who is interested in taking part, please email the **Multiply Team** on

Multiply@capitalccg.ac.uk

for more details, email the Multiply team on: **Multiply@capitalccg.ac.uk** or scan the QR code



Multiply

SUPPORTED BY
MAYOR OF LONDON

Capital City College Training

CITY AND ISLINGTON COLLEGE

The College of Haringey, Enfield and North East London

wk Westminster Kingsway College

Find your nearest warm welcome space



camden.gov.uk/warmwelcome

Camden

To help everyone stay warm this winter, 'warm welcome' spaces are available in Camden's libraries, council buildings and voluntary and community sector organisations across the borough.

Each 'warm welcome' space will be a little different in its offer but wherever residents visit, they will be met with warmth and kindness, and they will be able to relax, meet up with others and get support with the cost of living crisis in a safe and warm place.

Seeking a new Career?



KX Recruit is the recruitment agency that matches employers with jobseekers at King's Cross.

We are passionate about King's Cross and are here to help **local business** to find the right staff, and at the same time help **local people** to access the job opportunities created by the redevelopment of King's Cross. Our service is **personal, highly-specialised and completely free-of-charge**. We help companies to recruit at all levels and have a track record of successfully working with a range of companies, from small businesses to multi-national organisations.

Contact us today

Call 020 36914000

Email reception@kxrecruit.co.uk

KX Recruit, 11 Stable St, London, N1C 4AB

www.kxrecruit.co.uk

COOPERATION TOWN

Cooperation St Martin's is your new community food co-op.

A food co-op is a neighbourhood buying group, where members get quality groceries at very affordable prices.

Co-ops buy food and household products in bulk and, in addition, get free supermarket surplus.

Co-op members save up to 40% off their weekly food costs by organising with their neighbours.

Food co-ops are run by members, who together decide what to buy and how to run the project. No bosses, no managers!

Meeting every Thursday, 7pm

At St Martin's Church, Vicar's Road NW5 4NN

To find out more and join the co-op contact Martin on 07901 001754

www.cooperation.town | info@cooperation.town | @CooperationTown



Citizens Advice Camden

How to contact us:



Adviceline

0808 278 7835

free number. You do not need credit on your phone to call us

Monday – Friday 10am-4pm



Complete the call-back request form on our website and we will call you.

www.camdencabservice.org.uk

If you need help with **Universal Credit** please call us on:

* **Help to Claim** for advice about making new claims up until your first payment

Call **0800 1448 4444** (free number). Mon to Fri 8am - 6pm

Webchat:

visit <https://www.citizensadvice.org.uk/benefits/universal-credit/claiming/helptoclaim/> on our website and click on the 'Talk to an Adviser' button half way down the page

* **Universal Credit Support** for help maintaining your claim and problems including UC stopping, sanctions and appeals.

Call **07765 293116** and leave a message with your number and we'll call you back

Visit our website for details of all our services

Citizens Advice Camden is a registered charity 291955

I want to support people in my community



Volunteer with us

Advice Support Workers

This role provides administrative support for the service.

Trainee Advisers

This role gives detailed advice and assistance to our clients.

Benefit Case Makers

This role supports client in making disability benefit applications.

Adviceline Assessors

This role provides an initial telephone assessment of client issues.



Please visit our website for details of our current volunteering opportunities or email us for further details:

Volunteer.Project@camdencabservice.org.uk

www.camdencabservice.org.uk

Cost of Living Crisis - Camden Support Available



Healthy Start pre-paid card and free vitamins

Do you receive income support? Are you pregnant or do you have any children under the age of four? You may be eligible for a Healthy Start prepaid card. The Healthy Start payments can be used to buy milk, fruit, vegetables, and infant formula. If you are eligible, you may receive: **£4.25 each week from the 10th week of your pregnancy, £8.50 each week for children from birth to one year old, £4.25 each week for children between one and four years old.** [Apply online](#). Pregnant women and children under the age of four are also eligible for free vitamins from children's centres. Find your local children's centre [here](#).

Cost of living crisis advice, support booklet and translated advice

To support residents with the cost of living crisis, Camden have developed an advice and support booklet [which can be downloaded here](#). We have translated posters which signpost to support with the cost of living crisis, help with food, energy bills, mental health and help finding a job into Arabic, Somali, Sylheti, Turkish, Kurdish, Lingala and Swahili. [These can be downloaded on Camden website](#).

Cost of Living Crisis Fund Payment

Camden Council's Cost of Living Crisis Fund is for residents and families facing severe financial hardship and who cannot afford essentials – including food, energy bills, water, electricity and housing.

- The maximum award for a household of any size is £500
- A household can only receive a maximum of two awards in a 12-month period - and the amount you are awarded will depend on your circumstances and household size
- We will prioritise those in greatest need

The support can take many forms including payments into bank accounts, vouchers, help with debt repayments or equipment that will help you to reduce your costs and/or keep warm this winter.

How to apply

Camden want to ensure residents are getting all the help and advice they need to live well in Camden.

If you are a tenant and in financial hardship, speak to your neighbourhood housing officer who will be able to refer you to the scheme and help you get other forms of support.

If you live in temporary or supported housing or have a social worker, speak to your support worker as they can also refer you for a payment and help you get other forms of support.

If you live in the private rented sector, other social housing or own your home and are in financial hardship, [speak to one of our advice partners](#). You can also get help via [Good Work Camden](#), by calling Citizens Advice Camden on 0808 278 7835 or by calling us on 020 7974 4444, option 9 (welfare support).

We can also refer you as school – come and speak to us if you think you are eligible and need our help to access this support (see eligibility criteria below):

Eligibility criteria

You must have lived in Camden for at least six weeks. We will check the council tax database and if you are not registered then we will come back to you for another form of proof such as a bill, bank statement or benefit letter addressed to you at the address you are claiming for. The faster we receive proof of residency the faster the award can be made.

2. No more than two payments will be made per household in any 12-month period. When you apply, we will check records to see how many awards a household has received. If there is more than one adult or family in the household, the application must come from the person responsible for council tax.

3. You must be over 18 to apply, but we will accept applications from 16 to 18 year olds living independently because we know that not all young people are able to remain at home

You must be able to prove that you are in severe hardship or financial crisis

The cost-of-living advice bus

If you're struggling with the cost-of-living crisis and want some help, come along to our advice bus. Run in collaboration with local advice partners, you'll be able to get advice on a range of issues - including money, debt, help finding a job and accessing all the support you're entitled to. In December, you can find the advice bus dates using this link [camden.gov.uk/winterevents](#). To find out more about advice and support, visit [camden.gov.uk/costofliving](#). To find your nearest 'warm welcome' space, visit [camden.gov.uk/warmwelcome](#)

Keir Starmer

MP for Holborn and St Pancras



Casework Service

If you live in Holborn and St Pancras and are facing a problem, my team and I may be able to help.

Please get in touch with my constituency office if you need my support.

You will need to include your full address and phone number.



keir.starmer.constituency@parliament.uk



020 7388 7862



Keir Starmer MP, House of Commons, London, SW1A 0AA

Come and talk to us...

We listen to parents. We can advise you about your child's development, breastfeeding, parenting, housing, employment and benefits advice. There are local free drop-in 'stay and play' sessions and we can help you find an early education and childcare place. In fact everything you need in the early years to bring up your child.

Come along to your local children's centre and get to know other parents.

If you would like to know more — just ask us.

To find out more about services and support in your area, or just to ask a question, please phone or call in to your nearest children's centre. We do not charge for our services.



Pregnant or have a child under five?
We can help, come and talk to us



Children's Centres:

-  **1a Children's Centre**
1a Rosebery Avenue ECLR 4SR
020 7974 7024
-  **Regents Park Children's Centre**
Augustus Street NW1 3TJ
020 7974 8954
-  **Harmood Children's Centre**
1 Forge Place NW1 8DQ
020 7974 8961
-  **Agar Children's Centre**
Lulworth, Wrotham Road NW1 9SU
020 7974 4789
-  **Kilburn Grange Children's Centre**
1 Palmerston Road NW6 2JL
020 7974 5080

Find out more:
camden.gov.uk/camdensurestart

Camden Sure Start
Your journey. Our support.



Children's_Centre_Colateral_Sure_Start_with_Father_Illustrations_Final_Artwork.indd 1

12/06/2018 11:44



Pregnancy & New Born Baby



New Born Baby to 2 Years



Child 2 to 5 Years

Mums, Dads and Carers, come with your children to your local children's centre.

Happy, healthy and looking forward to the future? That's what you and your child deserve. It's why Camden has developed a complete range of services, designed to offer support during the first months and years of your child's life.

We're here for the whole family. From the moment you know you're expecting a baby, our services and support will be available to you and your child, right up until birth and for years into the future.

 Advice and play activities to support your child's speech and language

What kind of help?

We want you to feel confident as a parent, to be aware of everything that's available for your child's early development. We can help — come and talk to us.

You may be a first-time dad or mum or you could already have a family. Either way, we want to help you and your child to feel secure, healthy and happy.

Some dads and mums are anxious about caring for their baby and how to look after a growing child. Others need help with practical issues like benefits advice, employment or arranging affordable childcare.

Whatever you need, we want to help you and your child get the best start in life.

 One-to-one support if you are feeling low, anxious or stressed by family life

Our support.

-  Midwifery and health visiting services
-  Information and support about breastfeeding, baby feeding and healthy eating
-  Stay and play drop-ins and other activities for you and your child to enjoy together
-  Family support team — if you need extra help
-  Early education and childcare and childminders
-  Help to find training and employment and benefits advice
-  Local services for children with special educational needs and/or Disabilities, visit localoffer.camden.gov.uk

Children's_Centre_Colateral_Sure_Start_with_Father_Illustrations_Final_Artwork.indd 2

12/06/2018 11:44

Camden Children's Centre Services

If you or any friends/family are tidying gardens and pruning trees please save and bring in any branches or logs for our Forest School. Any size! They are very useful for making dens and forest crafts. Thank you so much. If you have any questions, please pop over and speak to Beth Cleine in Year 1 or Rebecca Combes in Nursery.



Fleet's Forest School Request

Message from Camden Music Service:



Half price instrument/singing lessons for children of families claiming housing benefit and council tax support

Universal Music Group has generously given us some money to help families of pupils in KS2 (Years 3 to 6) to pay for music lessons. **Priority will be given to those pupils already on instrument lesson waiting lists.**

Here are the instruments you can choose in this scheme (please note that not all schools can offer all instruments as for tutors to attend a school there needs to be a certain amount of children wanting to do a specific instrument.

Apply here: <https://www.camden.gov.uk/apply-for-music-lessons-in-school>

	<p>Violin <u>J.S Bach - "Chaconne" Partita No.2 by Esther Abrami - YouTube</u></p> <p>Usually plays the tune 'Small and light'</p>	<p>Percussion <u>Hyun-gi Lee - Garage Drummer - Percussion Final - BBC Young Musicians 2012 - YouTube</u> https://www.youtube.com/watch?v=xxzK9CipS04</p> <p>Ideal if you want to play lots of different instruments, from small to large</p>	
	<p>Cello <u>Sheku Kanneh-Mason - No Woman, No Cry (Arr. Cello) [Studio Session] - YouTube</u></p> <p>Plays the lower accompaniment, usually large to carry, on your back</p>	<p>Ukulele <u>Jake Shimabukuro Performing Bohemian Rhapsody On HiSessions - YouTube</u></p> <p>Small and light to carry Easy to write songs and sing along with</p>	
	<p>Recorder <u>BBC Young Musician 2012 - Charlotte Barbour-Condini (recorder) - Trotto (Anon.) - YouTube</u></p> <p>Small and light to carry Lots of different sizes from very low to very high You need lots of gentle breath control!</p>	<p>Guitar <u>BACH Sean Shibe BWV 997 (Development) - YouTube</u></p> <p>Can play the melody or strum chords Easy to write songs and sing along with You can play alone or in a band</p>	
	<p>Flute <u>Havana - Camila Cabello Flute Cover - YouTube</u></p> <p>Small and light to carry Needs a lot of breath! Held sideways</p>	<p>Voice / singing lessons</p>	
	<p>Clarinet <u>Introducing the Clarinet with Julian Bliss Discover Instruments Classic FM - YouTube</u></p> <p>Small and light to carry Needs a lot of breath!</p>	<p>Euphonium <u>Uptown Funk (Euphonium Loop) - Tubavisionary - YouTube</u></p> <p>Usually plays the lower accompaniment (not the tune) Be different and play this!</p>	
	<p>Saxophone <u>BBC Proms - Darius Milhaud: Scaramouche (Excerpt) - YouTube</u></p> <p>Large to carry, on your back Needs a lot of breath!</p>	<p>Trombone <u>GoPro on Trombone: Star Wars - Imperial March - YouTube</u></p> <p>Plays the lower accompaniment usually, although sometimes has the tune Large to carry</p>	
	<p>Trumpet <u>Alison Balsom - Autumn Leaves (Les Feuilles Mortes) - Live in London - YouTube</u></p> <p>Small to carry Needs a lot of breath</p>	<p>French Horn <u>Instrument: Horn - YouTube</u></p> <p>Medium sized Be different and play this!</p>	

Why learn music?

Learning a musical instrument can –

Support your child's literacy and numeracy

Help with concentration, co-ordination and mood

Lead to a career or be a lifelong, fulfilling activity where they will make friends.

How can you help?

Your child will need to practise regularly to make progress. At first this will mean setting aside 10 – 15 minutes three or four times a week (a regular time is best) but as your child progresses, they will need to practise most days, for longer. Younger children will need you to help them – you don't need to be musical, just be encouraging.

What else will help?

As soon as your child is able to play for more than a few minutes happily, and can play and read about eight notes, they could join one of our groups, make friends, and really develop their musicality.

Find out more here

www.camden.gov.uk/saturday-music-centres

and here

www.camden.gov.uk/music-service-ensembles

Terms and conditions

All Camden Music staff have enhanced DBS clearance.

Payment for lessons must be made in advance. Lessons can only begin once a payment is received. You may pay in two instalments. You must have paid the second instalment by half term.

We offer ten lessons per school term. Most terms have more than ten weeks. In the event of us not being able to offer ten lessons we will credit your account or make a refund for lessons missed. If the school is closed for reasons relating to COVID-19, lessons will be taught online. If you are unable to access online lessons, it may not be possible to make up the missed lessons and no refund will be given.

If the tutor is absent we will try to find a suitably qualified temporary replacement. If this is not possible and your child does not receive the number of lessons paid for that term, you will be reimbursed automatically after the end of the term.

In the event of a pupil not attending a lesson for any reason the tutor will make up the lesson, provided written notice has been given to both the tutor and to the Music Service three weeks before the missed lesson. If this is not possible, the cost of the missed lesson will be credited to your account. Lessons missed without three weeks' notice will not be made up and no refunds will be made.

Camden Music and/or the school will monitor the attendance and progress of pupils receiving free or subsidised lessons, and subsidy may be withdrawn if attendance is unsatisfactory.

If you wish to cancel tuition we require at least half a term's notice.

If you have any queries or require further information, please contact the Camden Music Service – 020 7974 7239 – camdenmusic@camden.gov.uk



- LESSONS IN SCHOOLS
- SATURDAY CENTRES
- SUNDAY GROUPS
- HOLIDAY COURSES

Camden Music is delighted to offer a wide range of one to one and shared music lessons in your school.

Getting started is easy!

Simply go to our website for more information and to register. Why not sign up for an exciting weekend or holiday group as well?

www.camden.gov.uk/camdens-music-service



020 7974 7239

camdenmusic@camden.gov.uk

Camden Music Service

The Crowndale Centre
218 – 220 Eversholt Street
London NW1 1BD
Tel 020 7974 7239

camdenmusic@camden.gov.uk

www.camden.gov.uk/camdens-music-service

Individual Instrument Tuition at Fleet

Welcome to the Camden Instrumental Service

The Camden Music Service aims to extend the range of high quality instrumental tuition available to children attending Camden schools.

What instruments can my child learn?

We currently offer tuition on piano. Do let us know if your child is interested in starting a different instrument. If there is enough interest we can look to provide a tutor.

Will my child need an instrument?

Yes, because to progress children need to practise between lessons. Camden Music Service has a stock of instruments available for hire at very reasonable cost. Unfortunately we are not able to hire pianos, keyboards or drum kits.

If you would like to buy an instrument we can help through our **Instrumental Purchase Scheme** which lets you buy a brand new instrument at a greatly reduced price. To make life even easier, we offer a 12-month interest-free repayment scheme.

When and where will lessons take place?

Most instrumental lessons take place during the school day which means that pupils leave a classroom lesson for a short period.

What types of lessons are there?

We offer shared or individual lessons. Shared lessons can only be offered where there is another child of a suitable age and standard to share with yours. If there isn't, we will arrange a 20-minute individual lesson for you.

Shared lessons

- Ideal for beginners, especially for younger children
- Children learn from each other and have the opportunity to play together; excellent preparation for playing in ensembles later
- Children who start in a group can change to individual lessons later

Individual lessons

- Ideal for children who benefit from individual attention
- Better for children who are easily distracted
- Any sense of competition is reduced
- Easier to arrange a lesson to suit the needs of the child

What will it cost?

The following fees are based on 10 lessons during a school term.

Ten shared lessons (2 children) £84 per term
Ten individual 20 min lessons £112 per term
Ten individual 30 min lessons £168 per term

How do I pay?

The Music Service will send you an invoice before the start of term. **Lessons will only start once you have paid.** Payment may be made online or over the phone.

Is any financial help available?

Children eligible for Free School Meals may apply for a 50% reduction in fees.

What about if we want to stop?

We will invoice you for the next term's lessons shortly after half term. If you don't want to continue, please let us know. Lessons are booked for a term at a time and it is not usually possible to stop lessons part way through a term.

How do I apply?

- You can apply online
- Visit www.camden.gov.uk/camdens-music-service and follow the link to instrumental and voice lessons in schools.
- We will put your child on our waiting list if there is not a lesson space available straight away.
- We will send you an invoice when a lesson is available. Your child's lesson will not start until you pay.

WELCOME TO CAMJAM!

The Camden Music Junior Saturday Centre



JOIN US ON SATURDAYS

at Brecknock School, NW1 9AL

- Music making sessions for children up to Year 5
- Instrumental lessons
- Bands, orchestras and choirs
- Music technology
- Adult choir
- Music groups for babies and very young children



www.camden.gov.uk/saturday-music-centres



camdenmusic

020 7974 7239
camdenmusic@camden.gov.uk

CAMDEN MHST

MENTAL HEALTH SUPPORT TEAM

Camden's Mental Health Support Team works across Primary schools providing interventions for children and young people experiencing anxiety or low mood.

SUPPORT AND INTERVENTIONS

Individual/Parent led therapy

Group therapy and workshops

Whole class interventions

Parent/carer webinars: including topic on sleep, screen time and anxiety therapeutic conversations.



emotional health & wellbeing in Camden,
for children, young people and their families



FLEET PRIMARY SCHOOLS PRACTITIONER

THOMAS BURNAND
School Hours: Wednesday Afternoon

If you are interested in getting help, please
contact:
Rebecca Wall —Deputy Head

Parent and carer counselling service

Are you stressed or worried and need someone to talk to?

Are you a parent or carer with a child in a Camden school or children's centre?

Life is complicated and sometimes feels like an uphill struggle. Talking with a counsellor can help untangle thoughts and feelings.

- The parent and carer counselling service is FREE
- Counselling sessions are confidential
- Counselling takes place in schools and children's centres

Counselling is arranged by completing an application form or by phoning or emailing the co-ordinator.

We can also support with the referral process from in school. If you would like any support with this please come and speak to Rhian or Don.



PCCS co-ordinator, SEN and psychology services

Children, schools and families, Camden Council, Crowndale Centre

218 Eversholt Street, London NW1 1BD

Telephone: 0207 974 6500

Email: pccs@camden.gov.uk



Free 24/7 urgent mental health support for young people

The last 18 months have been particularly hard for young people's mental health and wellbeing. Young people and their families in need of urgent help with their mental health can get free 24/7 support from trained NHS professionals by telephone.

The NHS has set up free telephone lines across London for young people in distress, open all day, every day, and staffed by trained mental health professionals. They can provide immediate support, or refer people to other sources of help if needed.

Find your local crisis line number [here](#).

URGENT MENTAL HEALTH SUPPORT 24/7

Worried about your mental health?

Young people and their parents can get urgent support and advice from trained NHS mental health advisors, any time, day or night.

Every mental health trust in London has put in place a telephone line for people in urgent need – including children, young people and their parents. The lines are free to call and open 365 days a year.

AREA	BOROUGHES COVERED	24/7 SUPPORT NUMBERS
North West London	Brent, Hillingdon, Harrow, Kensington & Chelsea and Westminster	0800 023 4650
	Ealing, Hounslow and Hammersmith & Fulham	0800 328 4444
North Central London	Barnet, Camden, Enfield, Haringey and Islington	0800 151 0023
North East London	City & Hackney	0800 073 0006
	Newham	0800 073 0066
	Tower Hamlets	0800 073 0003
South West London	Barking & Dagenham, Havering, Redbridge and Waltham Forest	0800 995 1000
	Kingston, Merton, Richmond, Sutton and Wandsworth	0800 028 8000
South East London	Croydon, Lambeth, Lewisham and Southwark	0800 731 2864
	Bexley, Bromley and Greenwich	0800 350 8590



Online learning resources and homework

- Mathletics: login.mathletics.com or download app for mobile
- Times Table Rockstars: <https://play.ttrockstars.com/auth/school> or download app for mobile
- Numbots (EYFS/KS1): <https://play.numbots.com/#/account/school-login/33442>
- Bug Club Reading Resource: <https://www.activelearnprimary.co.uk/login?c=0>

The sign in details for the three resources above are the same (for Bug Club you will also need the school code which is **tpgk**)

- Seesaw: <https://app.seesaw.me/#/login> or download app
- Busy things: <https://www.busythings.co.uk/lgfi-login/>

If you do not have working internet or a device for your children to access these resources on (tablet, laptop or computer) please speak to their class teacher as soon as possible.

FREE SCHOOL MEALS

You may be entitled to Free School Meals if you receive one of the following:

- Income Support
- Income-based Job Seeker's Allowance
- Income-related Employment and Support Allowance
- Universal Credit – your household income must be less than £7,400 a year (after tax and not including benefits)
- Child Tax Credit with a taxable income of no more than £16,190 and not in receipt of Working Tax Credit
- the Guaranteed Element of State Pension Credit support from the National Asylum Support Service (NASS)

Clue

There are hundreds of different ones out there, you will find them near home printers

and when not hiding inside printers they usually look like this

www.recycle4charity.co.uk

Recycle 4 Charity Treasure Hunt

Attention to all children and teachers!

Find some empty ink cartridges and bring them to the school to turn them into gold!

Your school will receive money for them, and you will help the environment with your recycling!

If you receive Working Tax Credit you will not be entitled to free school meals unless you have:

- stopped work in the last 4 weeks; or
 - reduced your hours to less than 16 hours in the last 4 weeks
- Free school meal entitlement will mean that you will not have to pay for school lunches and will receive concessionary rates for clubs and trips. It is also important for you to apply, as the school receives extra funding.

<https://accountforms.camden.gov.uk/freeschoolmeals/>

Do you have any used printer cartridges lying around at home? Send them into the school office!

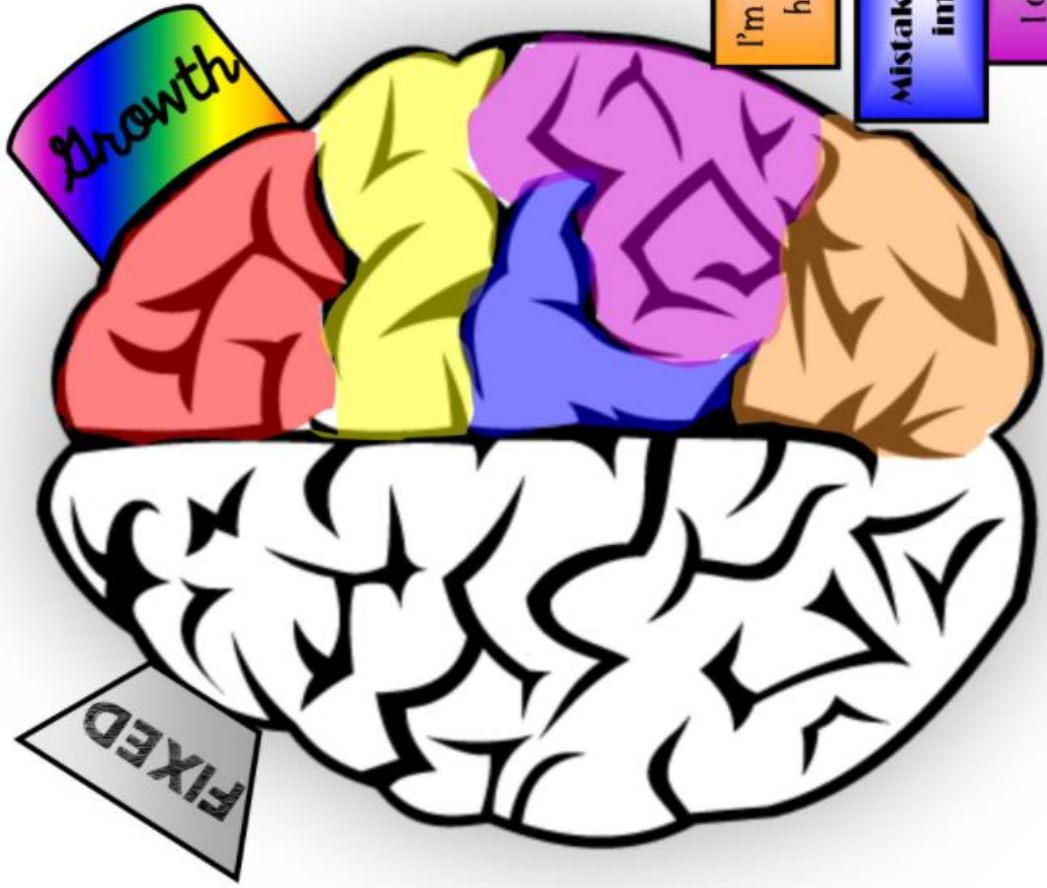
Parent group: Families, Food and Feelings

The Enhanced Healthy Living Service (EHLS) runs quarterly 6-week parent groups for Camden and Islington parents/carers of children aged 5-17 who struggle with excess weight. The group focuses on psychoeducation and strategies around boundary setting, healthy modelling, emotional eating and encouraging a healthy relationship with food. Referrals are accepted by professionals and parents can also self-refer via the brandoncentre.healthyliving@nhs.net email address.



Change your words Change your *Mindset*

- I give up.
- I can't do math/science/social studies/reading.
- I am awesome at this!
- I can't make this any better.
- I made a mistake!
- I'm never gonna be as good as him/her.
- This is too hard.
- I'm not good at this.
- It's good enough.



- I AM GOING TO TRAIN MY BRAIN IN MATH/SCIENCE/SOCIAL STUDIES/READING!!
- Is this really my best work?
- This may take some time and effort.
- What am I missing?
- I'll use some of the strategies I've learned.
- I'm going to figure out what he/she does and try it!
- I'm on the right track!
- Mistakes help me improve.
- I can always improve; I'll keep trying!

Gender equality: guide for families

What are gender stereotypes?

Fixed and widely held ideas about roles and behaviours that society thinks appropriate for men and women, girls and boys. For example that boys are more active, adventurous and tough and that girls are more caring, emotional and concerned with appearance. These stereotypes are everywhere in children's lives – in clothes, toys, books, media and language.

Children learn what those around them expect of them as a girl or a boy and their brains adapt. What might look like a child's free choice of toys, friends, subjects or jobs is heavily influenced by the messages the child has absorbed from birth about what's suitable for their gender. **The good news is that we can change these messages.**



Why are they bad for everyone?

Gender stereotypes can limit children's choices, behaviour, aspirations and even achievement. They are bad for individuals and for society. They steer girls and boys in different directions – feeding different subject choices, different job options and even different health outcomes.

Study and work:

- In childhood, construction and science toys are often sold 'for boys'. At A level, only 10% of computing and 22% of physics students are girls. At work, less than 10% of engineers are female.
- In childhood, children learn that dolls are 'girls' toys' and that women do more caring work. At work, fathers are twice as likely to be turned down in a request for flexible working. Only 11% of nurses are male.
- When it comes to children's career ideas, the gender divide is as strong at age 4 as at 14.



Health and mental health:

- In childhood, boys learn not to show their feelings except through anger. Boys are 6 times less likely than girls to seek Childline counselling about suicidal thoughts and feelings. Men account for 75% of all suicides.
- 1 in 4 women in the UK will be a victim of domestic violence in her lifetime.



FAQs

- *But aren't girls and boys just different?*
Despite popular perceptions, there is no credible scientific evidence of natural difference in interests or skills between genders. Children learn from the stereotypes surrounding them what is considered 'normal' for their gender – and their choices adapt accordingly.
- *What's wrong with girls and boys liking different things?*
Nothing, so long as it is down to an individual child's preference rather than pressure to conform. Girls and boys are more alike than different.
- *Are you saying I should stop telling my daughter how pretty she is?*
No – but if her appearance is what your daughter is most often praised for then she may start to think that society values her looks above her other qualities.
- *What about boys?*
Statistically, boys are more likely than girls to achieve lower grades in school, to go to prison and not to seek help for mental health problems. Harmful gender stereotyping contributes to these outcomes.

Our aim: that children be free to make their own way as individuals, unlimited by gendered expectations



www.liftinglimits.org.uk

Gender stereotyping: what can we do about it?

Toys:

- Building blocks, puzzles and construction develop spatial awareness. Dolls and imaginary play help to develop empathy and communication. Introduce a range of toys for all children.
- Thinking about buying presents? For help avoiding gifts which reinforce gender stereotyping see the Let Toys be Toys website at www.lettoysbetoysof.org.uk – especially their Gift Guides and recommended retailers.

Opportunities to challenge gender stereotypes:

- In role-play games with younger children, who plays what roles?
- Talk to children about what they are seeing on TV – in what roles are male and female characters shown? How are female and male characters dressed?
- Look for positive role models of female leaders, women in sport, men in caring roles.

Language:

- Think about the messages language can suggest – e.g. 'man up' suggests that boys should not show their emotions. Never use 'girl' or 'girlie' as an insult.
- 'We need a strong man to open that' 'I can't do that with these nails' – throwaway comments can have a powerful impact on children.
- Use 'humankind' rather than 'mankind' or 'firefighter' rather than 'fireman' – avoid using the masculine to refer to everyone.

Expectations and aspirations:

Beware assumptions which might influence children's aspirations – e.g. by suggesting certain jobs are more for women or men or by assuming a future role as carer for girls and breadwinner for boys.

Books:

- Children's books still send very gendered messages about male and female roles.
- Look for books with strong female leads and boys in caring roles – for boys and girls.
 - Swap 'he' and 'she' where male-dominated.
 - Use books as an opportunity to question roles and attitudes.

Around the home:

- Who do children see doing what work around the house?
- What chores are children given at home – are they different for girls and boys?
- Is different behaviour expected of sons and daughters?
- If newspapers and magazines show women and men in stereotypical roles, question these so that children don't assume that's just the way the world is.

Attitudes:

- Teach children that caring roles are rewarding and important – and ensure that boys can see themselves in caring roles.
- All emotions are for everyone! Don't discourage boys from crying or expressing how they feel.
- What praise are children given? e.g. repeated praise of girls as pretty and boys as clever or strong teaches children what society expects of them.

Clothes and shoes:

- Are girls wearing clothes or shoes which are more delicate – which they need to keep clean or which hinder them in climbing or kicking a ball?
- Think about slogans, colours and the messages they send.

Similarities and differences:

- Don't set up girls and boys as 'opposite' or separate – there are more similarities between them than differences.
- Beware treating girls or boys as uniform groups.
- Friendships between genders are to be encouraged.



www.liftinglimits.org.uk

Camden Early Help



Everyone needs a little help sometimes. If you're feeling worried about your child, or you want to make a change in your life, Camden Early Help is here for you, your children and your whole family.

- ▶ Free support service for families with children aged 0 to 19 in Camden
- ▶ Practical and emotional support with a range of life issues if they are starting to feel overwhelming
- ▶ Working with you and your family to help make whatever changes you want to make
- ▶ Helping you and your family develop friendships and feel connected with your community.

Early Help



As well as family workers, there's lots of other options:

- ▶ Early Help Family Group Conference – bring together a circle of family members, friends, neighbours or community members to help solve problems
- ▶ Parenting programmes – a range of programmes for parents to be, and parents with children from 0-19 to help you feel confident and positive about your parenting role
- ▶ Activities – to enjoy time together as a family
- ▶ Early Help Play – support to access holiday play schemes, breakfast clubs, after-school clubs, and free early education and childcare places*
- ▶ Employment advice and welfare rights – access to our advisors to help with benefits and all things work-related
- ▶ Connections to housing support and homelessness services
- ▶ Connections to community organisations in your area.



How do I get Early Help?

You can contact us today, or you can talk to someone in your life that you trust. This might be your child's teacher or nursery worker, your GP or health visitor, your housing or tenancy support worker or youth worker.

They can contact us on your behalf, and then you can work with us if you would like to.

If it feels like it's time to make a change, Camden Early Help would love to be by your side so the little things don't become big things.

Other formats

If you require this leaflet in large print, Braille or in another language please contact us.

Find out more

T: 020 7974 3317 (9am to 5pm, ask for Early Help)
E: LBCMASHadmin@camden.gov.uk
 For more information about Early Help visit:
camden.gov.uk/earlyhelp
 Sure Start 020 7974 8961
camden.gov.uk/surestart

Produced by Creative Services 1251/23

* free childcare places for eligible 2 year olds



What's Early Help?

Early Help is about family and being here for when families are experiencing things that are starting to feel overwhelming. Early Help is about whatever is important to you, whatever is causing you to feel distress or worry. Early Help is for families with children of any age, from 0 to 19. It's voluntary and your choice whether to have it or not.

What can you help with?

Every family we work with is unique. We work with families experiencing relationship breakdown or conflict, violence in the home, children showing distressed behaviour, support for first time parents, housing, rent or money worries, difficulties at school, worries about a child's health or development, managing changes in circumstances, grief and bereavement, and mental health problems. Often it's a combination of many things. But whatever it is that you and your family want to change, we are here to work with you - to help you and your family get to where you want to be.

What does Early Help do?

There are lots of Early Help services in Camden, so we'll work with you to figure out the one you think will be most helpful to you and your family. You can watch a video about Early Help made by a Camden young person here: [youtube.com/user/CamdenCouncil](https://www.youtube.com/user/CamdenCouncil)

Early Help services include:

Sure Start

A full range of help and support in your local children's centre if you are pregnant or have a child under 5.

Early Help Co-ordinators

Someone to have a chat with to see how we can help and what Early Help service might be most useful.

First Stop Early Help

A team of family workers who will work alongside you for up to 12 weeks, and help you and the network of people around you to feel on the right track.

Families in Focus

A team of family workers who will work alongside you for 6 to 12 months.

Transformation Team

A team of family workers who will work alongside you for 12 months plus.

Youth Early Help

A full range of help and support for families with children aged 11 plus and young people.



Every Early Help team will:

- ▶ Be with you through the tough stuff
- ▶ Listen to you and your family – we'll be led by you
- ▶ Focus on what's important to you and your family, and what a good life might look like for you
- ▶ Work with you to find out what's going well and what feels strong
- ▶ Work with you to explore and make sense of the things you want to change
- ▶ Make a plan with you, your children and your family so the changes can start to happen
- ▶ Make sure everyone involved works together to help you and your family best.

