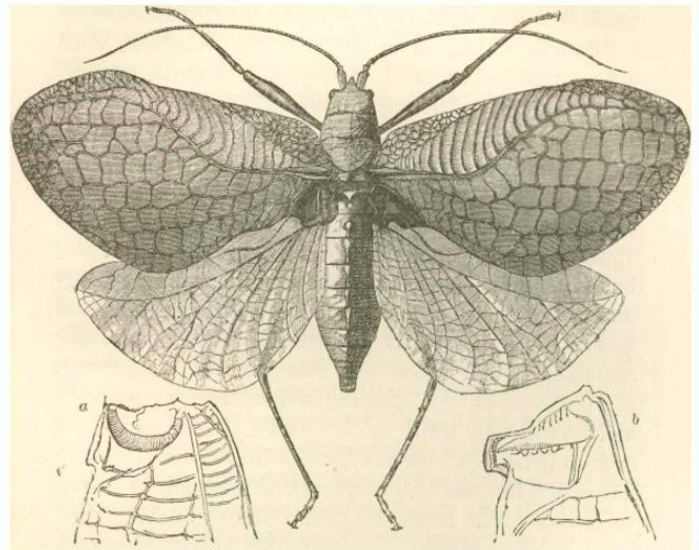
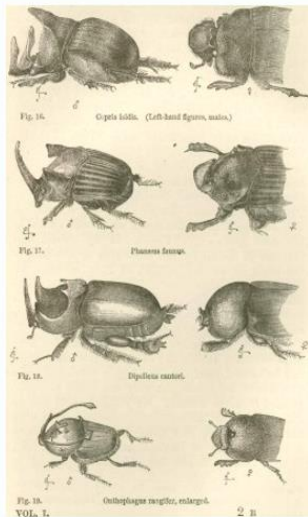




For centuries, scientists have used careful and detailed drawings to better understand living things.

The detailed drawings by naturalist Charles Darwin helped us to better understand living things from around the world.



Although sketches and notes are still made by scientists, the artist [Levon Biss](#) is using a more modern approach to capturing the detail of some beautiful invertebrates.



Create your own larger-scale image

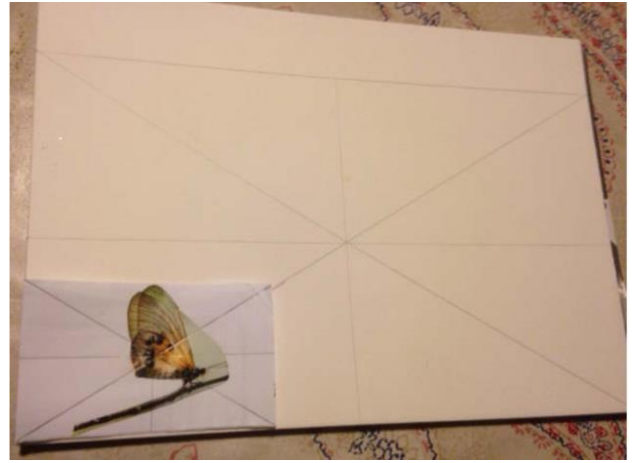
- Using a ruler, draw 4 criss-cross lines across the small image (diagonally corner to corner, then vertically through the centre point and horizontally through the centre point).



- Place the small image exactly in the corner of the larger sheet of drawing paper. Use a tiny dot of sticky-tack to hold it temporarily in place if necessary.



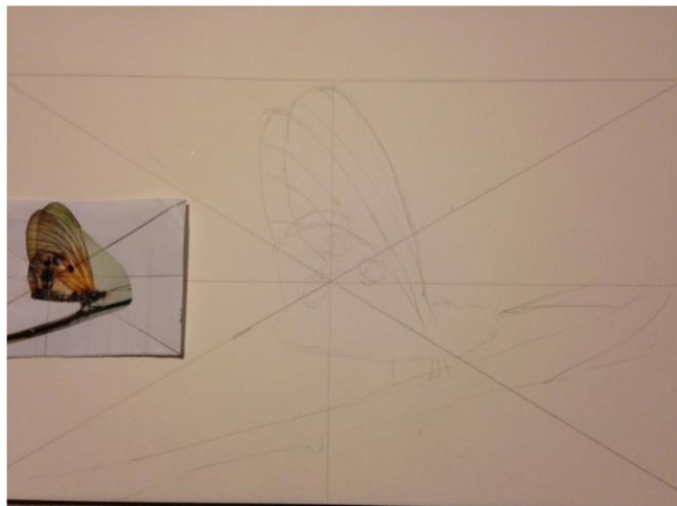
- Following the diagonal line, carry it on (very faintly) across the larger paper. This will indicate where the new corner will need to be on the larger paper. The large paper can then be trimmed to this new point, or simply draw a straight line to the new adjacent corner.



- The large paper will now be a scale-up version of the paper that has the image on it.

- On the large paper, draw in the other 3 criss-cross lines – this will create the same 8 triangles on both sheets

- Copy what you can see in the smaller triangles in the corresponding larger triangles. Model how to work out where the lines intersect the criss-cross lines (Is it halfway across, near the edge, etc?)



*You can either use an insect you've collected from outside or one from the pictures below*



Invertebrates

