



# Fleet Primary School

Fleet Road Hampstead London NW3 2QT

Tel: 020 7485 2028

E-mail: [admin@fleet.camden.sch.uk](mailto:admin@fleet.camden.sch.uk)

Headteacher: Don McGibbon



---

## Learning from home – Year 3 w.b. 20<sup>th</sup> April 2020

---

Hi Year 3!

It's the start of the Summer Term! I'm really excited about our topic – The Enchanted Forest! We're going to be focusing on plants, animals, forests and fantasy!

Remember to send me the work you do this week – it's so lovely for me to see everything you've been up to! We're back to twice-weekly phone calls as it's term time again so I'm looking forward to chatting to you all.

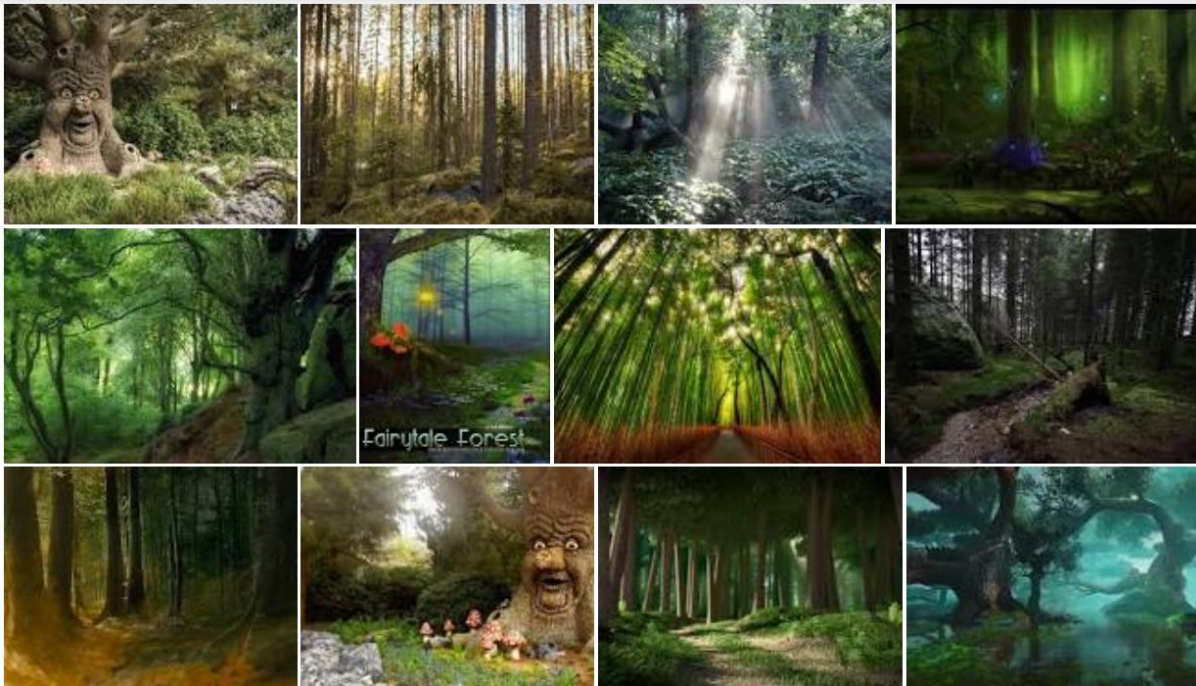
Hope you are all well and speak soon,  
Miss. Costelloe

*A note for parents:*

***Below is a list of tasks and activities to work on over this week. Your child should be able to work on these tasks mostly independently, although it's always nice for them to discuss their ideas and share what they've achieved with someone. We do not expect every single task to be completed, rather it is a list of ideas to keep them busy and learning, in line with the National Curriculum. Whilst it is important to keep learning key facts, knowledge and skills, this is also a great opportunity for your child to explore their interests further and be creative.***

***Please share a sample of their learning with us every week – a piece of English, Maths and perhaps another piece they are very proud of – by emailing it to [admin@fleet.camden.sch.uk](mailto:admin@fleet.camden.sch.uk) with 'FAO Miss. Costelloe' as the subject. Please e-mail me if you have any queries!***





### Topic Launch – Art

Our topic is 'The Enchanted Forest'. Do whatever you like to celebrate our new topic! Here are some ideas to pick from (feel free to do more than one!) or you can come up with your own ideas!

You could:

- Bake a cake and decorate it with an 'Enchanted Forest' theme
- Act out going into an Enchanted Forest with an adult or sibling
- Write a poem or story that links with an Enchanted Forest
- Paint, draw or collage a forest scene
- Make a piece of art with items from nature, e.g. leaves
- Write or perform a song that links to the Enchanted Forest
- Write lists of things you may find in an Enchanted Forest (Unicorns? Fairies? Goblins? Waterfalls?)

### English

This week we are focusing on haikus.

A syllable is a part of a word that contains sounds of a word. You can hear how many syllables a word has by clapping the beats of that word!

Let's practise:

'Cat' – one syllable.

'Dog' – one syllable.

'School' – one syllable.

'Water' – two syllables.

'River' – two syllables.

'Forest' – two syllables.

'Primary' – three syllables.

'Costelloe' – three syllables.

A **haiku** is a form of poetry. The first line has five syllables, the second line has seven syllables and the third line has five syllables again.

Here is a haiku to help you remember:

**I am first with five  
Then seven in the middle –  
Five again to end.**

Here is a video with more information about haikus.

[https://www.youtube.com/watch?v=tb6RC0zB\\_-4](https://www.youtube.com/watch?v=tb6RC0zB_-4)

*Task 1:* Get out your Spelling list for this week. Clap out the syllables for each word – how many are there in each word? Write your answers down.

*Task 2:*

Some of the lines in these haikus are either too short or too long. Can you edit them so that they have the correct number of syllables in each line?

**Green and long legs  
Hop on speckled lily pads  
Splash in cool water**

**The black cat's soft fur  
Frames her luminous eyes  
White whiskers sit below**

*Task 3:*

Copy and complete these haikus.

*Mild* – Use the words given underneath

*Spicy* – Choose your own words

**Green leaves \_\_\_ and \_\_\_\_\_  
They \_\_\_ above my head  
Summer has arrived now.**

**The \_\_\_ pot \_\_\_\_\_  
An aroma \_\_\_ my nose  
My dinner is ready**

Words you could use to complete these haikus: hits, boils, wave, gleam, grow, black

*Task 4:*

*Spicy* - Pick an animal and write your own haiku to describe it.

*Hot* – Pick an animal and write your own haiku to describe it. Don't tell the reader what the animal is – can they guess from your description?

## Grammar

Practise identifying different types of words by playing online grammar games.

<https://www.sheppardsoftware.com/grammar/nouns.htm>

<https://www.topmarks.co.uk/Flash.aspx?e=spelling-grammar02>

## Maths

Practise your fluency every day – do three per day of the ‘Number Bonds’ activities here:

<https://www.topmarks.co.uk/maths-games/hit-the-button>

Also practise ‘Missing Numbers’ (above link) daily

Practise your times tables every day - <https://www.topmarks.co.uk/maths-games/5-7-years/times-tables>

Task 1:

Play the following ‘place value’ games.

<https://www.topmarks.co.uk/learning-to-count/place-value-basketball>

<https://www.topmarks.co.uk/place-value/place-value-charts>

<http://www.ictgames.com/sharkNumbers/mobile/index.html>

<http://flash.topmarks.co.uk/4766>

<https://www.topmarks.co.uk/Flash.aspx?a=activity03>

Task 2:

Pick a 3 digit number. Draw a poster displaying the number. On it, show me how you could represent the number using:

- Words
- Digits
- Dienes
- Multilink
- Numicon
- Any other ways you can think of!

Task 3:

Draw a place value chart like the below:

Hundreds	Tens	Ones



Write the following numbers in the chart (a new line for each number).  
Numbers: 222, 22, 2, 100, 101, 004, 63, 593, 894.

Task 4:

Here is a random number generator.

<https://numbergenerator.org/randomnumbergenerator/1-1000#!numbers=1&low=1&high=1000&unique=true&csv=&oddeven=&start=true&oddqty=0&sorted=false>

Generate a number.

- 1) Add 1 to it
- 2) Subtract 1 from it
- 3) Add 10 to it
- 4) Subtract 10 from it
- 5) Add 100 to it
- 6) Subtract 100 from it

Do this at least five times (so generate a different number each time, then repeat Q1-6!)

Task 5:

Sarah is given two calculations to work out:

**101-9**  
**410-9**

Sarah says that:

*"It's easier to do 101-9 than 410-9 because 1 is smaller in value than 4."*

Do you agree with her?

Explain whether or not you agree with Sarah and why. Show your working!

## RE

This week, we are learning about Hannukah. What can you find about it?  
Here are some links to help you:

<https://www.bbc.co.uk/bitesize/topics/znwhfg8/articles/zj446v4>

<https://www.activityvillage.co.uk/hanukkah>

<https://kids.kiddle.co/Hanukkah>

- 1) Make a presentation telling me what you have found out (could be a poster, a video, a powerpoint – it's up to you!)
- 2) Make your own Menorah. You could do a handprint one or use candles or fabric – see here for ideas <https://www.activityvillage.co.uk/hanukkah-crafts>

## Science

This week, we are learning about parts of a plant.

A plant has four main parts: flowers, leaves, stem and roots.

Your task is to draw and label a plant – make sure you write the function (job) of each part!

If you have access to a garden or go on a walk this week, maybe you could look at any plants you see – can you identify the different parts?

Here are videos to help you:

<https://www.bbc.co.uk/bitesize/topics/zy66fg8/articles/zcinp39>

<https://www.youtube.com/watch?v=CqYe6kN7jrQ>