

Science

Tuesday 5th January



<https://www.youtube.com/watch?v=ZrSWYE37MJs>

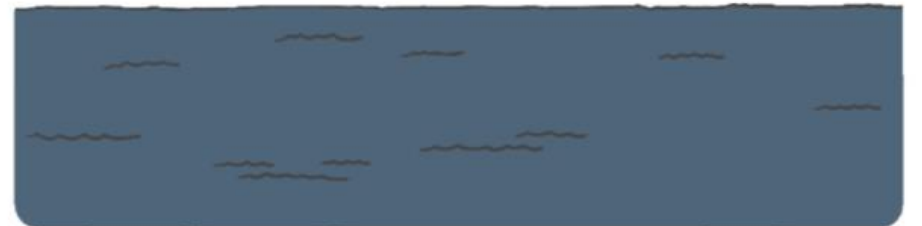
Animal Habitats

A habitat is a natural environment that an animal lives in. A habitat provides animals with 3 important things:

- food;
- shelter;
- a safe place to raise their young.



A habitat can be as big as an ocean...



... or as small as a rock.



Where do you live?



What living things live and grow there?



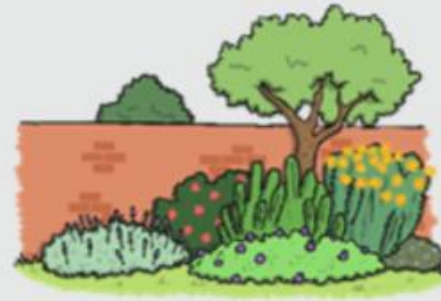
How does your habitat keep you safe and sheltered?



How does your habitat provide food and water?



How does your habitat provide space for you to move and grow?



Urban Habitats

Flowering plants such as nettles, daisies, dandelions and buttercups grow in parks, gardens and hedges. They even grow in abandoned buildings and through cracks in concrete. Many insects, slugs and snails live among the plants.



Some animals, such as squirrels and garden birds, get their food from the trees and hedges that grow in cities. Other animals like foxes, pigeons and rats are able to live in cities because they get most of their food from the waste that people leave behind.



Woodland Habitats

In a woodland habitat there are lots of trees that grow close together. Common trees that grow here include English oak, ash, beech, hawthorn and birch.



Most British woodlands are deciduous, which means the leaves fall off the trees in winter. The fallen leaves provide food and shelter for many creatures and rot into the soil, making it rich and full of nutrients. As well as the fallen leaves, there are shrubs, flowers and grasses beneath the trees. These provide a home for many insects and invertebrates like worms, slugs and snails.



We are learning to identify and name a variety of plants and animals in their habitats.

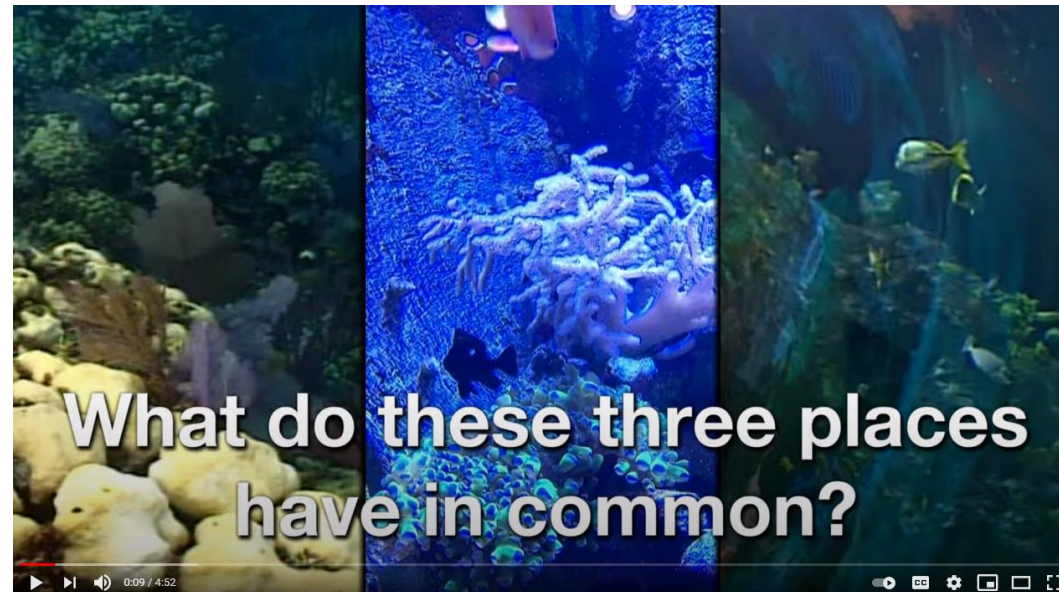
I need to:

- Research Woodland and Urban environments
- Draw and label plants and animals that would live in each habitat.
- Can you add any extra information?



Science

Wednesday 6th January



<https://www.youtube.com/watch?v=FlsgHW11nOs>

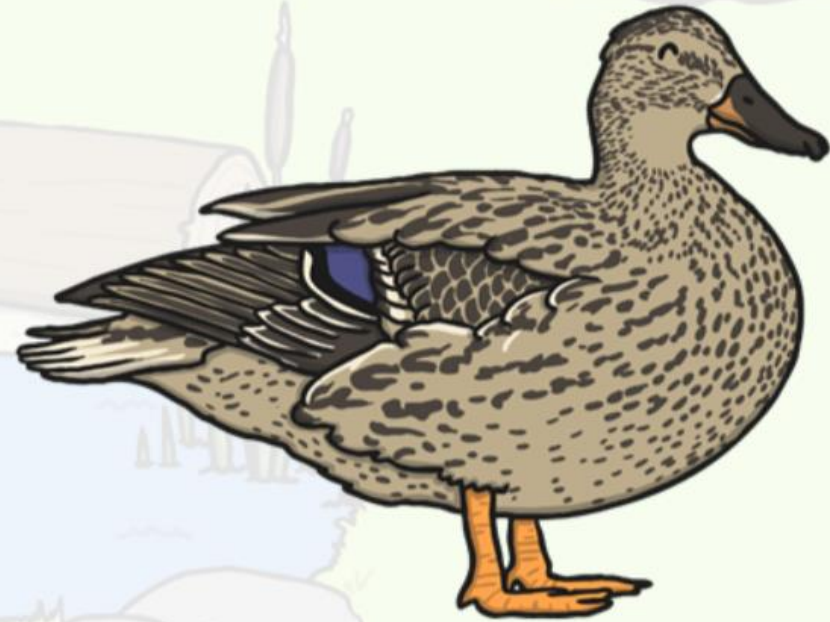
Pond Habitats

These plants provide food and shelter for worms, slugs, snails, and insects like damselflies, dragonflies, mayflies and water beetles.

Amphibians like frogs, toads and newts eat the small creatures, and in turn, these are eaten by mammals like bats and water voles.



Many birds live near the water, including ducks, moorhens and kingfishers.

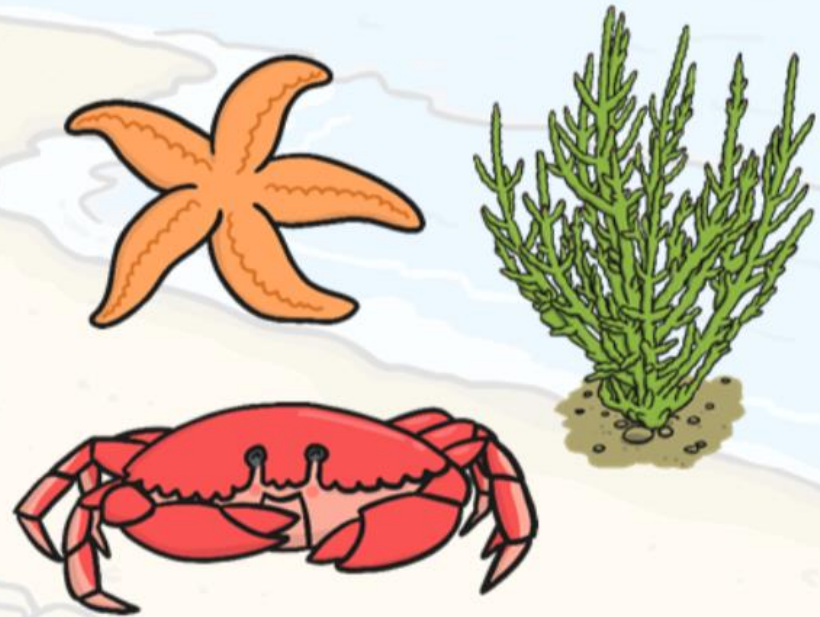


Coastal Habitats

Because Britain is made up of islands it has a lot of coastal habitats. These are places where the land meets the sea. Some of these habitats are sandy, some are marshy, and some are high, rocky cliffs.

The plants here have adapted to grow in salty, windy conditions. These include samphire, juniper, sea kale, glasswort and marram grass.

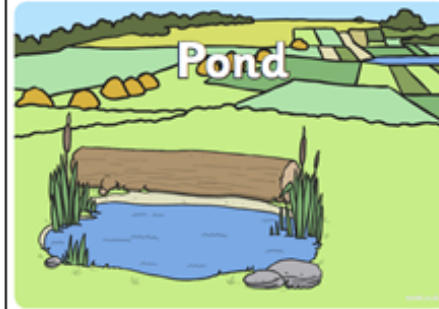
Many of the creatures that live in coastal areas survive in rock pools left by the tides, like barnacles, mussels, crabs and starfish.



We are learning to identify and name a variety of plants and animals in their habitats.

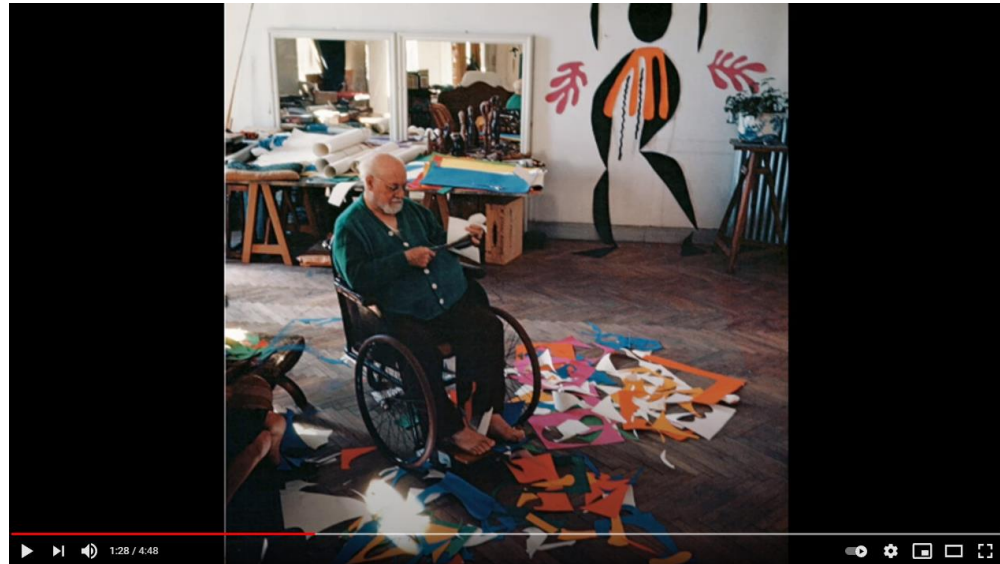
I need to:

- Research Coast and Pond environments
- Draw and label plants and animals that would live in each habitat.
- Can you add any extra information?



Art

Thursday 7th January



<https://www.youtube.com/watch?v=hy4DUpsC22c>

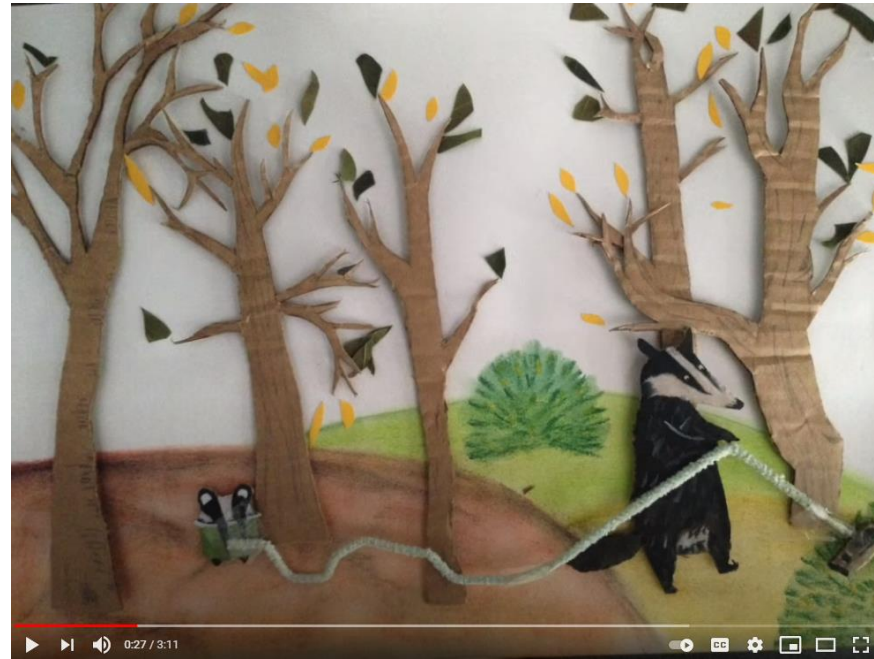


Watch the video about Henri Matisse and have a go at making your own collage. You can use cardboard, scraps of paper and recycle packaging. Use leaves and the natural world to inspire you.



Art

Friday 8th January



<https://www.youtube.com/watch?v=qg6C6Ry0zuU>

Watch the **Tidy** animation from this week's English slides. Have a go at making your own forest woodland scene. You can use recycled materials and natural found objects like leaves.

